

Activity ID	Activity Name	Remaining Duration	Start	Finish	Total Float	2015																		
						May			June			July			August			Number						
						3	10	17	24	31	07	14	21	28	05	12	19		26	02	09	16	23	30
3MRP - May 2015 to Aug 2015																								
02 - PRE-CONSTRUCTION WORKS																								
02.3 - Method Statement / Shop Drawings																								
0230-1380	MS Landscape Deck Structure - Submission	28	20-May-15	16-Jun-15	811																			
0230-1390	MS Landscape Deck Structure - ER Review & Comment	28	17-Jun-15	14-Jul-15	811																			
0230-1400	MS Landscape Deck Structure - Resubmission	28	15-Jul-15	11-Aug-15	811																			
0230-1611	MS Noise Semi Enclosure - Submission	60	20-May-15	18-Jul-15	131																			
0230-1612	MS Noise Semi Enclosure - ER Review / Comment	28	19-Jul-15	15-Aug-15	131																			
0230-1690	MS Approach Ramp - ER Approval	14	01-Feb-15 A	02-Jun-15	304																			
A10110	MS for Partition Walls and outstanding columns at APS Basement - ER No Adverse Comment	0	01-Feb-15 A	28-Apr-15 A																				
A10500	MS EVB Basement & Mezzanine Construction - ER Review / Comment	1	16-Jan-15 A	20-May-15	26																			
A10510	MS EVB Basement & Mezzanine Construction - Resubmission	14	21-May-15	03-Jun-15	26																			
A10520	MS EVB Basement & Mezzanine Construction - No Adverse Comment	14	04-Jun-15	17-Jun-15	26																			
A10640	MS for Demolition of existing Westbound Bridge - Submission	0	20-Feb-15 A	28-Feb-15 A																				
A10650	MS Demolition of existing Westbound Bridge - ER Review / Comment	0	01-Mar-15 A	15-Mar-15 A																				
A10660	MS Demolition of existing Westbound Bridge - Resubmission	0	16-Mar-15 A	20-Apr-15 A																				
A10670	MS Demolition of existing Westbound Bridge - No Adverse Comment	14	20-May-15	02-Jun-15	13																			
A10680	MS for Connection of EVB and EVA - Submission	10	10-Mar-15 A	29-May-15	0																			
A10690	MS for Connection of EVB and EVA - ER Review & Comment	12	30-May-15	10-Jun-15	0																			
A10700	MS for Connection of EVB and EVA - Resubmission	6	11-Jun-15	16-Jun-15	0																			
A10710	MS for Connection of EVB and EVA - ER No Adverse Comment	10	17-Jun-15	26-Jun-15*	0																			
A5940	MS for Temporary Steel Tower under existing W/B Bridge - ER No Adverse Comment	2	15-Feb-15 A	21-May-15	27																			
A7580	MS Temporary Bridge TA2 - Resubmission	0	16-Mar-15 A	22-Apr-15 A																				
A7590	MS Temporary Bridge TA2 - ER No Adverse Comment	6	23-Apr-15 A	25-May-15	6																			
A8931	MS for installation of Temporary JTI sign gantry- Submission	0	10-Mar-15 A	15-Mar-15 A																				
A8941	MS for installation of Temporary JTI sign gantry - ER Review & Comment	0	16-Mar-15 A	19-Mar-15 A																				
A8951	MS for installation of Temporary JTI sign gantry - Resubmission	0	20-Mar-15 A	31-Mar-15 A																				
A8961	MS for installation of Temporary JTI sign gantry - ER No Adverse Comment	0	01-Apr-15 A	18-Apr-15 A																				
02.4 - Contractor's Design and Build Items																								
0240-1113	Noise Enclosure Structural - Shop Drawings	0	02-Jan-14 A	20-May-15	50																			
0240-1180	HGHK Permanent Carpark Design - ER/HGHK Review and Comment	50	20-May-15	08-Jul-15	1																			
0240-1270	Landscaping Design - Submission	90	20-May-15*	17-Aug-15	659																			
A5890	Temp Bridge "TA2" Design (Foundation & Structure) - ER No Adverse Comment	0	01-Dec-14 A	22-Apr-15 A																				
A5900	Temp Bridge "TA2" - Fabrication	2	01-Dec-14 A	22-May-15	4																			
A8991	Design for Trial Panels > Green Roof & Wall- ER No Adverse Comment	0	28-Feb-15 A	10-Apr-15 A																				
A9001	Design for Trial Panels > Green Roof & Wall - Fabrication	0	01-Mar-15 A	17-Apr-15 A																				
02.5 - Bridge Segment/Beam Off-site Precasting																								
0250-1720.19	Precast Beam Bridge C1 2021-C	0	26-Jan-15 A	25-Mar-15 A																				
0250-1720.20	Precast Beam Bridge C1 2122-A	0	11-Feb-15 A	25-Mar-15 A																				
0250-1720.21	Precast Beam Bridge C1 2122-B	0	12-Feb-15 A	29-Apr-15 A																				
0250-1720.22	Precast Beam Bridge C1 2122-C	0	12-Feb-15 A	29-Apr-15 A																				
0250-1720.23	Precast Beam Bridge C1 2122-D	14	15-Apr-15 A	05-Jun-15	153																			
0250-1720.25	Precast Beam Bridge C1 2122-E	18	05-Jun-15	27-Jun-15	153																			
0250-1720.26	Precast Beam Bridge C1 2122-F	18	27-Jun-15	20-Jul-15	153																			
0250-1720.27	Precast Beam Bridge E E3E2-A	14	10-May-15 A	09-Jun-15	89																			
0250-1720.28	Precast Beam Bridge E E3E2-B	14	10-May-15 A	09-Jun-15	89																			
0250-1720.29	Precast Beam Bridge E E3E2-C	18	14-Apr-15 A	09-Jun-15	89																			
0250-1720.30	Precast Beam Bridge E E4E3-A	14	06-Apr-15 A	05-Jun-15	89																			

█ Remaining Level of Effort ◆ Milestone
█ Actual Level of Effort
█ Actual Work
█ Remaining Work
█ Critical Remaining Work

Contract HY/2009/19






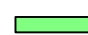

3 Months Rolling Program (20 May 2015 - 19 Aug 2015)

Activity ID	Activity Name	Remaining Duration	Start	Finish	Total Float	2015																		
						May					June					July					August			
						3	10	17	24	31	07	14	21	28	05	12	19	26	02	09	16	23	30	
0250-1720.31	Precast Beam Bridge E E4E3-B	14	08-May-15 A	05-Jun-15	92	Precast Beam Bridge E E4E3-B																		
0250-1720.32	Precast Beam Bridge E E4E3-C	14	03-Apr-15 A	05-Jun-15	92	Precast Beam Bridge E E4E3-C																		
0250-1720.33	Precast Beam Bridge F5 - 10	18	05-Jun-15	27-Jun-15	135	Precast Beam Bridge F5 - 10																		
0250-1720.35	Precast Beam Bridge F5 - 11	18	27-Jun-15	20-Jul-15	135	Precast Beam Bridge F5 - 11																		
0250-1720.36	Precast Beam Bridge F5 - 12	18	20-Jul-15	10-Aug-15	135	Precast Beam Bridge F5 - 12																		
0250-1720.37	Precast Beam Bridge F5 - 13	18	10-Aug-15	31-Aug-15	135	Precast Beam Bridge F5 - 13																		
0250-2070	Bridge F1C Pier 36 T-span Segment Off-site Casting (13 nos.)	31	20-May-15	25-Jun-15	159	Bridge F1C Pier 36 T-span Segment Off-site Casting (13 nos.)																		
0250-2080	Bridge F1C Pier 37 T-span Segment Off-site Casting (11 nos.)	27	26-Jun-15	28-Jul-15	159	Bridge F1C Pier 37 T-span Segment Off-site Casting (11 nos.)																		
0250-2090	Bridge F1C Abut D12 End-span Segment Off-site Casting (7 nos.)	22	20-May-15	13-Jun-15	168	Bridge F1C Abut D12 End-span Segment Off-site Casting (7 nos.)																		
0250-2100	Bridge F1C Pier 38 End-span Segment Off-site Casting (6 nos.)	19	15-Jun-15	08-Jul-15	176	Bridge F1C Pier 38 End-span Segment Off-site Casting (6 nos.)																		
0250-2110	Bridge F2C Pier 39 T-span Segment Off-site Casting (13 nos.)	0	11-Jan-15 A	26-Mar-15 A		Bridge F2C Pier 39 T-span Segment Off-site Casting (13 nos.)																		
0250-2120	Bridge F2C Pier 38 End-span Segment Off-site Casting (5 nos.)	0	09-Jan-15 A	10-Mar-15 A		Bridge F2C Pier 38 End-span Segment Off-site Casting (5 nos.)																		
0250-2130	Bridge F2C Pier 40 End-span Segment Off-site Casting (5 nos.)	0	09-Feb-15 A	10-Mar-15 A		Bridge F2C Pier 40 End-span Segment Off-site Casting (5 nos.)																		
0250-2140	Bridge F3C Pier 41 T-span Segment Off-site Casting (13 nos.)	31	10-Apr-15 A	25-Jun-15	235	Bridge F3C Pier 41 T-span Segment Off-site Casting (13 nos.)																		
0250-2150	Bridge F3C Pier 42 T-span Segment Off-site Casting (11 nos.)	22	18-Apr-15 A	13-Jun-15	244	Bridge F3C Pier 42 T-span Segment Off-site Casting (11 nos.)																		
0250-2160	Bridge F3C Pier 40 End-span Segment Off-site Casting (5 nos.)	16	10-Apr-15 A	06-Jun-15	243	Bridge F3C Pier 40 End-span Segment Off-site Casting (5 nos.)																		
0250-2170	Bridge F3C Pier 43 End-span Segment Off-site Casting (6 nos.)	19	08-Jun-15	30-Jun-15	243	Bridge F3C Pier 43 End-span Segment Off-site Casting (6 nos.)																		
A2410	Completion of Beam Off-Site Pre casting (Pier 17 - 20)	0		20-Jul-15	153	Completion of Beam Off-Site Pre casting (Pier 17 - 20)																		
A2420	Completion of Beam Off-Site Pre casting (Pier E2 - E3)	0		05-Jun-15	119	Completion of Beam Off-Site Pre casting (Pier E2 - E3)																		
A8380	Bridge F1B2 - Abut D12 Segment - 6 nos. (S2)	19	13-Jun-15	08-Jul-15	393	Bridge F1B2 - Abut D12 Segment - 6 nos. (S2)																		
A8390	Bridge F1B2 - Pier F1B2 Segment - 13 nos. (S1)	40	02-Jul-15	17-Aug-15	421	Bridge F1B2 - Pier F1B2 Segment - 13 nos. (S1)																		
A8410	Bridge F1B2 - Pier F3B2 Segment - 6 nos. (S2)	19	15-Jul-15	06-Aug-15	393	Bridge F1B2 - Pier F3B2 Segment - 6 nos. (S2)																		
A8420	Bridge F2B - Pier F3B2 Segment - 5 nos. (S2)	16	13-Aug-15	01-Sep-15	393	Bridge F2B - Pier F3B2 Segment - 5 nos. (S2)																		

03 - PRELIMINARY WORKS

03.3 - Interface Works

A7630.1	TTA for Relocation of Cul-De-Sac > Breaking of Concrete/Road Pavment > Stage 2	0	04-Mar-15 A	06-Mar-15 A		TTA for Relocation of Cul-De-Sac > Stage 2																		
A7631	Relocation of Cul-De-Sac > Excavate & install Manhole > Stage 2	0	06-Mar-15 A	18-Mar-15 A		Relocation of Cul-De-Sac > Excavate & install Manhole > Stage 2																		
A7631.1	Relocation of Cul-De-Sac > Backfilling > Stage 2	0	18-Mar-15 A	28-Mar-15 A		Relocation of Cul-De-Sac > Backfilling > Stage 2																		
A7631.2	Relocation of Cul-De-Sac > Sheetpile Removal > Stage 2	0	29-Mar-15 A	29-Mar-15 A		Relocation of Cul-De-Sac > Sheetpile Removal > Stage 2																		
A7631.3	Relocation of Cul-De-Sac > Paving Preparation > Stage 2	0	30-Mar-15 A	30-Mar-15 A		Relocation of Cul-De-Sac > Paving Preparation > Stage 2																		
A7631.4	Relocation of Cul-De-Sac > Concreting of Pavement + Testing > Stage 2	0	31-Mar-15 A	31-Mar-15 A		Relocation of Cul-De-Sac > Concreting of Pavement + Testing > Stage 2																		
A7631.5	Relocation of Cul-De-Sac > Asphalt paving > Stage 2	0	01-Apr-15 A	01-Apr-15 A		Relocation of Cul-De-Sac > Asphalt paving > Stage 2																		
A7632	TTA for Relocation of Cul-De-Sac > Stage 3	4	01-Apr-15 A	23-May-15	12	TTA for Relocation of Cul-De-Sac > Stage 3																		
A7632.12	Relocation of Cul-De-Sac > Opening of Existing Pavement > Stage 3	0	08-Apr-15 A	12-Apr-15 A		Relocation of Cul-De-Sac > Opening of Existing Pavement > Stage 3																		
A7632.13	Relocation of Cul-De-Sac > Drive sheetpile & Erect Copperdam > Stage 3	0	13-Apr-15 A	18-Apr-15 A		Relocation of Cul-De-Sac > Drive sheetpile & Erect Copperdam > Stage 3																		
A7632.14	Relocation of Cul-De-Sac > Excavation + Blinding > Stage 3	0	01-Apr-15 A	04-May-15 A		Relocation of Cul-De-Sac > Excavation + Blinding > Stage 3																		
A7632.15	Relocation of Cul-De-Sac > Lay Granular Bedding > Stage 3	0	04-May-15 A	05-May-15 A		Relocation of Cul-De-Sac > Lay Granular Bedding > Stage 3																		
A7632.16	Relocation of Cul-De-Sac > Lay 450 and 750 drain > Stage 3	0	05-May-15 A	05-May-15 A		Relocation of Cul-De-Sac > Lay 450 and 750 drain > Stage 3																		
A7632.17	Relocation of Cul-De-Sac > Cast Manhole Benching (2nos) > Stage 3	0	06-May-15 A	08-May-15 A		Relocation of Cul-De-Sac > Cast Manhole Benching (2nos) > Stage 3																		
A7632.17.1	Relocation of Cul-De-Sac > Install Water Main	0	01-May-15 A	05-May-15 A		Relocation of Cul-De-Sac > Install Water Main																		
A7632.18	Relocation of Cul-De-Sac > Erect Formwork and Cast Manhole (2nos)> Stage 3	0	06-May-15 A	13-May-15 A		Relocation of Cul-De-Sac > Erect Formwork and Cast Manhole (2nos)> Stage 3																		
A7632.19	Relocation of Cul-De-Sac > Backfilling > Stage 3	0	14-May-15 A	18-May-15 A		Relocation of Cul-De-Sac > Backfilling > Stage 3																		
A7632.21	Relocation of Cul-De-Sac > Concreting of Pavement + Testing > Stage 3	1	19-May-15 A	20-May-15	11	Relocation of Cul-De-Sac > Concreting of Pavement + Testing > Stage 3																		
A7632.22	Relocation of Cul-De-Sac > Asphalt paving > Stage 3	9	21-May-15	30-May-15	11	Relocation of Cul-De-Sac > Asphalt paving > Stage 3																		
A7634	Relocation Cul-De-Sac	0		30-May-15	11	Relocation Cul-De-Sac																		
A9200	Installation of JTI Gantry - Footing(Nosing)	0	10-Mar-15 A	14-Mar-15 A		Installation of JTI Gantry - Footing(Nosing)																		
A9201	Installation of JTI Gantry - Install Holding down Bolts	0	10-Mar-15 A	13-Mar-15 A		Installation of JTI Gantry - Install Holding down Bolts																		
A9202.1	Auto Toll and HKE Commissioning	0	20-Jan-15 A	26-Mar-15 A		Auto Toll and HKE Commissioning																		
A9203	Installation of JTI Gantry	0	16-Mar-15 A	26-Mar-15 A		Installation of JTI Gantry																		

	Remaining Level of Effort			Milestone
	Actual Level of Effort			
	Actual Work			
	Remaining Work			
	Critical Remaining Work			

Contract HY/2009/19

3 Months Rolling Program (20 May 2015 - 19 Aug 2015)

Activity ID	Activity Name	Remaining Duration	Start	Finish	Total Float	2015																	
						May			June			July			August			Number					
						3	10	17	24	31	07	14	21	28	05	12	19		26	02	09	16	23
A5830.7	Stitching - Tunnel base Slab > Westbound	5	01-Jun-15	05-Jun-15	11																Stitching - Tunnel base Slab > Westbound		
A5830.8	Stitching - Roof Slab > Westbound	5	06-Jun-15	11-Jun-15	11																Stitching - Roof Slab > Westbound		
A5830.9	Stitching - OHVD > Westbound	3	12-Jun-15	15-Jun-15	11																Stitching - OHVD > Westbound		
A5830.9.1	Completion of Outstanding Works at APS & Tunnel	0		15-Jun-15	11																◆ Completion of Outstanding Works at APS & Tunnel		
05.1.4 - Tunnel Structure																							
A5393	Tunnel Bay 16 -Tunnel Roof - Steel Fixing	0	14-Feb-15 A	07-Mar-15 A																			
A5394	Tunnel Bay 16 -Tunnel Roof - (Concrete)	0	08-Mar-15 A	08-Mar-15 A																			
A5395	Weak Seam Rectification works for sub-standard D-Wall	7	10-Mar-15 A	27-May-15	27																Weak Seam Rectification works for sub-standard D-Wall		
A5396	Complete Tunnel Roof	0		08-Mar-15 A																			
05.1.5 - EVB Sub-structure & Tunnel																							
A10530	Tunnel Roadside/Profile Barrier and Cable Trough Portion IB & ID > Bay 14-16	8	20-May-15	28-May-15	0																Tunnel Roadside/Profile Barrier and Cable Trough Portion IB & ID > Bay 14-16		
A10540	Tunnel Roadside/Profile Barrier and Cable Trough Portion IB & ID > Bay 16-19	8	29-May-15	06-Jun-15	0																Tunnel Roadside/Profile Barrier and Cable Trough Portion IB & ID > Bay 16-19		
A5513	Tunnel Roadside/Profile Barrier and Cable Trough Portion IB & ID > Bay 19-21	8	08-Jun-15	16-Jun-15	0																Tunnel Roadside/Profile Barrier and Cable Trough Portion IB & ID > Bay 19-21		
A5514	Tunnel Roadside/Profile Barrier and Cable Trough Portion IVIII B & IXB	10	17-Jun-15	29-Jun-15	0																Tunnel Roadside/Profile Barrier and Cable Trough Portion IVIII B & IXB		
A5524	EVB Basement (Zone A1) - Partition Wall (Reb. Fix + Concreting) > CH4850-CH487	8	29-Jul-15	06-Aug-15	3																EVB Basement (Zone A1) - Partiti		
A5534	EVB Basement (Zone A1) - Staircase-2nos.(Reb. Fix + Concreting) >CH4850-CH48	8	07-Aug-15	15-Aug-15	41																EVB Basement (Zone A		
A5544	EVB Basement (Zone A2) - Partition Wall (Reb. Fix + Concreting)> CH4875-CH490	8	17-Aug-15	25-Aug-15	41																EVB Baser		
A5554	EVB Basement (Zone A2) - Staircase-1nos.(Reb. Fix + Concreting)> CH4875-CH49	8	26-Aug-15	03-Sep-15	45																		
A5564	EVB Basement (Zone B1) - Partition Wall (Reb. Fix + Concreting)> CH4900-CH492	8	09-Sep-15	17-Sep-15	41																		
A5744	EVB Mezzanine (Zone A1) - (Reb. Fix + Concreting)> CH4850-CH4875	14	07-Aug-15	22-Aug-15	3																EVB Mezzanin		
A5754	EVB Mezzanine (Zone A1) - Staircase-2nos.(Reb. Fix + Concreting)> CH4850-CH48	14	24-Aug-15	08-Sep-15	3																		
A5764	EVB Mezzanine (Zone A2) - (Reb. Fix + Concreting)> CH4875-CH4900	14	09-Sep-15	24-Sep-15	3																		
A5784	EVB Mezzanine (Zone B1) - Partition Wall (Reb. Fix + Concreting)> CH4900-CH492	14	25-Sep-15	13-Oct-15	3																		
05.2 - Cut & Cover Tunnel Ch 4932-5149																							
05.2.3 - ELS																							
A10400	Tunnel Bay 1 & 2 Duct room wall steam	7	13-Mar-15 A	27-May-15	27																Tunnel Bay 1 & 2 Duct room wall steam		
A4192	Pump Sump E - Storm Water Room Collection	7	20-May-15	27-May-15	27																Pump Sump E - Storm Water Room Collection		
05.2.4 - Tunnel Structure																							
0524-2535	Waterproof Top Slab Bay 1 to Bay 4	0	16-Apr-15 A	17-Apr-15 A																	Bay 1 to Bay 4		
05.2.5 - Road & Miscellaneous Works																							
0525-2882	Backfill above Tunnel Structure Bay 1 to Bay 4	0	18-Apr-15 A	26-Apr-15 A																	ove Tunnel Structure Bay 1 to Bay 4		
0525-2900	Tunnel Roadside/Profile Barrier (excl vent bldg)	3	05-Aug-14 A	22-May-15	31																Tunnel Roadside/Profile Barrier (excl vent bldg)		
0525-2940	Backfill above Tunnel Structure Bay 5 to Bay 9	0	28-Nov-14 A	17-Mar-15 A																			
A10410	Paving Bay 13 - 5	0	16-Feb-15 A	19-Mar-15 A																			
A10420	Paving Bay 4 - 1	2	27-Apr-15 A	22-May-15	44																Paving Bay 4 - 1		
A10430	Drainage Bay 13 - 5	0	23-Feb-15 A	16-Mar-15 A																			
A10440	Drainage Bay 4 - 1	0	20-Apr-15 A	27-Apr-15 A																	Bay 4 - 1		
A10450	Provisioning of Carwash Machine - Temp FEHD	0	08-Apr-15 A	22-Apr-15 A																	Carwash Machine - Temp FEHD		
A10460	Road & Carpark Marking - Temp. FEHD	0	18-Mar-15 A	29-Mar-15 A																			
A10470	Lighting - Temp FEHD	0	20-Mar-15 A	31-Mar-15 A																			
A10480	Portal Wall at top of tunnel	0	09-Feb-15 A	25-Feb-15 A																			
A10527	Remove Tunnel Falseworks Bay 14-21	0	20-Mar-15 A	12-May-15 A																	Remove Tunnel Falseworks Bay 14-21		
A10589.2	Remedial Works - Bay 9 OHVD - WestBound	7	20-May-15	27-May-15	27																Remedial Works - Bay 9 OHVD - WestBound		
A10589.6	Remedial Works - Concrete Repair Works / Trim overbreak Concrete Etc,Honeycon	7	09-Mar-15 A	27-May-15	27																Remedial Works - Concrete Repair Works / Trim overbreak Concrete Etc,Honeycooms/laitance, etc.		
A10589.6.7	Remedial Works - Sealing off Water Leakage at D-Wall	7	19-Mar-15 A	27-May-15	27																Remedial Works - Sealing off Water Leakage at D-Wall		
A10589.8	Waterproofing of D-Walls Bay 1-13	7	20-May-15	27-May-15	27																Waterproofing of D-Walls Bay 1-13		
A10589.9	Waterproofing of D-Walls Bay 14-21	7	20-May-15	27-May-15	27																Waterproofing of D-Walls Bay 14-21		
A10590	Complete Remaining work at C/C Tunnel	0		27-May-15	27																◆ Complete Remaining work at C/C Tunnel		

06 - SECTION 3 OF THE WORKS

- █ Remaining Level of Effort ◆ ◆ Milestone
- █ Actual Level of Effort
- █ Actual Work
- █ Remaining Work
- █ Critical Remaining Work

Contract HY/2009/19

3 Months Rolling Program (20 May 2015 - 19 Aug 2015)

Activity ID	Activity Name	Remaining Duration	Start	Finish	Total Float	2015																		
						May			June			July			August			September						
						3	10	17	24	31	07	14	21	28	05	12	19	26	02	09	16	23	30	
06.2 - Box Culvert U1																								
A9180	In-Situ Testing of Drainage Pipe	0	19-Jan-15 A	20-Apr-15 A		Drainage Pipe																		
06.3 - Admin Building																								
0630-3119.13.1	Grd. Beam - (GL > L2-N6) - Blinding of Cap & Grnd. Beam	2	02-Jul-15	04-Jul-15	27																			
0630-3119.13.2	Grd. Beam - (GL > L2-N6) - Install Capping Plate + weld Test	5	04-Jul-15	10-Jul-15	27																			
0630-3119.14	Grd. Beam - (GL > L2-N6) - Reb Fix + Forworks (Grd. Beam & Pile Cap) > Part1	13	10-Jul-15	25-Jul-15	27																			
0630-3119.15	Grd. Beam - (GL > L2-N6) - Reb Fix + Forworks (Grd. Beam & Pile Cap) > Part2	9	25-Jul-15	05-Aug-15	27																			
0630-3119.16	Grd. Beam - (GL > L2-N6) - Concreting (Grd. Beam & Pile Cap)	1	05-Aug-15	06-Aug-15	27																			
0630-3119.18	Grd. Beam - (GL > L2-N6) - Formworks, sheet-Pile Removal and Backfill	4	06-Aug-15	11-Aug-15	27																			
0630-3119.24	Grd. Beam - (GL > G2-K6) - Rebar Fixing (Grd. Beam & Pile Cap)	0	03-Mar-15 A	06-Apr-15 A		Rebar Fixing (Grd. Beam & Pile Cap)																		
0630-3119.25	Grd. Beam - (GL > G2-K6) - Erect Formworks (Grd. Beam & Pile Cap)	0	07-Apr-15 A	12-Apr-15 A		Erect Formworks (Grd. Beam & Pile Cap)																		
0630-3119.26	Grd. Beam - (GL > G2-K6) - Concreting (Grd. Beam & Pile Cap)	0	13-Apr-15 A	13-Apr-15 A		Concreting (Grd. Beam & Pile Cap)																		
0630-3119.27	Grd. Beam - (GL > G2-K6) - Backfill	0	14-Apr-15 A	30-Apr-15 A		Backfill (Grd. Beam & Pile Cap)																		
0630-3119.84	Grd. Beam - (GL > A1-B6) - Install Capping Plate	0	06-Mar-15 A	21-Mar-15 A		Install Capping Plate (Grd. Beam & Pile Cap)																		
0630-3119.85	Grd. Beam - (GL > A1-B6) - (Grd. Beam & Pile Cap) + Formworks Part 1	0	22-Mar-15 A	17-Apr-15 A		(Grd. Beam & Pile Cap) + Formworks Part 1																		
0630-3119.86	Grd. Beam - (GL > A1-B6) - (Grd. Beam & Pile Cap) + Formworks Part 2	0	17-Apr-15 A	28-Apr-15 A		(Grd. Beam & Pile Cap) + Formworks Part 2																		
0630-3119.87	Grd. Beam - (GL > A1-B6) - Backfill	0	18-Apr-15 A	09-May-15 A		Backfill (Grd. Beam & Pile Cap)																		
0630-3119.91.1	Grd. Beam - (GL > C1-F2) - Drive Sheet-Pile Copperdam - Stage 2 (Subject to CC	14	19-Jun-15	08-Jul-15	23																			
0630-3119.92	Grd. Beam - (GL > C1-F2) - Excavate G.L to +1.0mPD and install Waling/Strut	6	08-Jul-15	15-Jul-15	23																			
0630-3119.93	Grd. Beam - (GL > C1-F2) - Excavate Pile-Cap B.L to -0.7mPD and Cast Vert/Hor f	3	15-Jul-15	18-Jul-15	23																			
0630-3119.94	Grd. Beam - (GL > C1-F2) - Install Capping Plate	6	18-Jul-15	25-Jul-15	23																			
0630-3119.95	Grd. Beam - (GL > C1-F2) - Beam Blinding Layer	3	25-Jul-15	29-Jul-15	23																			
0630-3119.96	Grd. Beam - (GL > C1-F2) - Rebar Fixing (Grd. Beam & Pile Cap) + Formworks	8	29-Jul-15	07-Aug-15	23																			
0630-3119.97	Grd. Beam - (GL > C1-F2) - Concreting (Grd. Beam & Pile Cap)	1	07-Aug-15	08-Aug-15	23																			
0630-3119.98	Grd. Beam - (GL > C1-F2) - Formworks, Sheet-Pile Removal and Backfill	6	08-Aug-15	15-Aug-15	23																			
0630-3121.49	Grd. Beam - (GL > P3-R6) - Back Fill	0	07-Feb-15 A	06-Mar-15 A		Back Fill (Grd. Beam & Pile Cap)																		
0630-3121.57.11	Grd. Beam - (GL > B2-C6) - Excavate to formation level	9	09-Jun-15	19-Jun-15	42																			
0630-3121.57.12	Grd. Beam - (GL > B2-C6) - Install Capping Plate	7	19-Jun-15	29-Jun-15	42																			
0630-3121.57.13	Grd. Beam - (GL > B2-C6) - Cast Beam Blinding Layer	1	29-Jun-15	30-Jun-15	42																			
0630-3121.57.14	Grd. Beam - (GL > B2-C6) - Rebar Fixing for Beam	7	30-Jun-15	09-Jul-15	42																			
0630-3121.57.15	Grd. Beam - (GL > B2-C6) - Erect Formworks for Beam	7	09-Jul-15	17-Jul-15	42																			
0630-3121.57.16	Grd. Beam - (GL > B2-C6) - Cast Concrete for Beam	3	17-Jul-15	21-Jul-15	42																			
0630-3121.57.17	Grd. Beam - (GL > B2-C6) - Formworks, sheet-Pile Removal and Backfill	3	21-Jul-15	24-Jul-15	42																			
0630-3121.57.21	Grd. Beam - (GL > F-G) - Excavate to formation level	9	19-Jun-15	02-Jul-15	33																			
0630-3121.57.22	Grd. Beam - (GL > F-G) - Install Capping Plate	7	02-Jul-15	10-Jul-15	33																			
0630-3121.57.23	Grd. Beam - (GL > F-G) - Cast Beam Blinding Layer	1	10-Jul-15	11-Jul-15	33																			
0630-3121.57.24	Grd. Beam - (GL > F-G) - Rebar Fixing for Beam	7	11-Jul-15	20-Jul-15	33																			
0630-3121.57.25	Grd. Beam - (GL > F-G) - Erect Formworks for Beam	7	20-Jul-15	28-Jul-15	33																			
0630-3121.57.26	Grd. Beam - (GL > F-G) - Cast Concrete for Beam	3	28-Jul-15	31-Jul-15	33																			
0630-3121.57.27	Grd. Beam - (GL > F-G) - Formworks, sheet-Pile Removal and Backfill	3	31-Jul-15	04-Aug-15	33																			
0630-3121.57.31	Grd. Beam - (GL > K-L) - Excavate to formation level	9	02-Jul-15	13-Jul-15	24																			
0630-3121.57.32	Grd. Beam - (GL > K-L) - Install Capping Plate	7	13-Jul-15	21-Jul-15	24																			
0630-3121.57.33	Grd. Beam - (GL > K-L) - Cast Beam Blinding Layer	1	21-Jul-15	22-Jul-15	24																			
0630-3121.57.34	Grd. Beam - (GL > K-L) - Rebar Fixing for Beam	7	22-Jul-15	30-Jul-15	24																			
0630-3121.57.35	Grd. Beam - (GL > K-L) - Erect Formworks for Beam	7	30-Jul-15	07-Aug-15	24																			
0630-3121.57.36	Grd. Beam - (GL > K-L) - Cast Concrete for Beam	3	07-Aug-15	11-Aug-15	24																			
0630-3121.57.37	Grd. Beam - (GL > K-L) - Formworks, sheet-Pile Removal and Backfill	3	11-Aug-15	14-Aug-15	24																			

08 - SECTION 5 WORK

08.1 - Retaining Wall 'F' Substructure

- Remaining Level of Effort
- Actual Level of Effort
- Actual Work
- Remaining Work
- Critical Remaining Work

Contract HY/2009/19

3 Months Rolling Program (20 May 2015 - 19 Aug 2015)

Activity ID	Activity Name	Remaining Duration	Start	Finish	Total Float	2015																			
						May			June			July			August				September						
						3	10	17	24	31	07	14	21	28	05	12	19	26	02	09	16	23	30		
A7671	Retaining Wall F Pre-Bored H-Pile - H - Beam + Grout > BS40a	0	07-Feb-15 A	04-Mar-15 A																					
A7672	Retaining Wall F Pre-Bored H-Pile - H - Beam + Grout > BS40b	0	30-Jan-15 A	06-Mar-15 A																					
A7673	Retaining Wall F Pre-Bored H-Pile - H - Beam + Grout > BS41a	0	04-Feb-15 A	06-Mar-15 A																					
A7740.1	Retaining Wall F Pre-Bored H-Pile - H - Installing H-Pile > BS45a	0	31-Dec-14 A	24-Feb-15 A																					
A7740.2	Retaining Wall F Pre-Bored H-Pile - H - Extract H-Pile due to Collapse of soil > BS4	0	25-Feb-15 A	03-Mar-15 A																					
A7740.3	Retaining Wall F Pre-Bored H-Pile - H - Grout plug > BS45a	0	04-Mar-15 A	06-Mar-15 A																					
A7740.4	Retaining Wall F Pre-Bored H-Pile - H - Beam + Grout > BS45a	0	06-Mar-15 A	26-Mar-15 A																					
A7791	Retaining Wall F Pre Bored - H > Pile Testing	18	27-Oct-15	16-Nov-15	138																				
A7792.1	Construction of pile cap for Retaining Wall F > C4-1	8	17-Nov-15	25-Nov-15	138																				
A7792.2	Construction of pile cap for Retaining Wall F > C4-2	8	26-Nov-15	04-Dec-15	138																				
A7792.3	Construction of pile cap for Retaining Wall F > C5-1	8	05-Dec-15	14-Dec-15	138																				
A7792.4	Construction of pile cap for Retaining Wall F > C5-2	8	15-Dec-15	23-Dec-15	138																				
A7792.5	Construction of pile cap for Retaining Wall F > C5-3	8	24-Dec-15	04-Jan-16	138																				
A7792.6	Construction of pile cap for Retaining Wall F > C5-4	8	05-Jan-16	13-Jan-16	138																				
A7800	Complete Pre-Bored H-Pile > Retaining Wall	0		26-Mar-15 A																					

09 - SECTION 6 OF THE WORKS

09.2 - Westbound - Pier 26-27

0920-2110	Pier 26-2 Pre-Bored H-Piles	0	07-Feb-15 A	24-Mar-15 A																
0920-2111	Pier 26-1 Pre-Bored H-Piles	0	09-Mar-15 A	25-Mar-15 A																
0920-2150	Pier 27 Prepare C.J. and Modify Tie Beam	18	25-Jul-15	14-Aug-15	51															
0920-2160	Pier 27 Construct Pier/Column	18	15-Aug-15	04-Sep-15	51															
0920-2180	Pier 26 Prepare C.J. + Drill in Re-bar + Modify Pilecap	18	14-Aug-15	03-Sep-15	35															

10 - SECTION X OF THE WORKS

10.1 - E/B Bridges (Bridge D, E and F)

10.1.1 - Marine Pier Construction																				
Pier F01 to F02																				
1011-2900	F1B Pier/Column Construction	12	20-May-15	02-Jun-15	116															
1011-2910	F1B Crosshead Construction	18	03-Jun-15	24-Jun-15	116															
1011-2930	Bearing installation pier F1B/F2B	12	25-Jun-15	09-Jul-15	116															
10.1.3 - E/B Bridge Construction																				
All E/B Bridges (Common)																				
1013-1720	Permanent Noise Barrier Type B1 E/B Bridge Ch 962-1059 (132m)	0	02-Dec-14 A	09-Mar-15 A																
1013-1730	Permanent Noise Barrier Type A1 E/B Bridge Ch 826-962 (136m)	0	05-Dec-14 A	17-Mar-15 A	136m)															
1013-1730.1	Green Panel Installation	0	12-Nov-14 A	28-Mar-15 A																
A7621	Remaining E/B Bridges Bitumin Paving Works + Marking - Bridge D1 & D2	0	18-Mar-15 A	19-Mar-15 A	Bridge D1 & D2															
10.1.4 - Bridge E / Hing Fat Slip Road																				
Pier Construction																				
A4822	Bridge E (Pier E3) - Pile Cap + Pier Const.	14	17-Aug-15	01-Sep-15	16															
Bridge Construction																				
A9260	Bridge E (Pier 18-19) - Rebar Fix > Diaphragm + Slab + Pipe install	0	13-Feb-15 A	26-Feb-15 A																
A9270	Bridge E (Pier 18-19) - Formworks > Slab	0	26-Feb-15 A	26-Feb-15 A																
A9280	Bridge E (Pier 18-19) - Concreting > Diaphragm + Slab	0	27-Feb-15 A	27-Feb-15 A																
A9310	Bridge E (Pier 18-19) - Stitching > Reb. Fix + Concretin	0	20-Feb-15 A	16-Mar-15 A																
A9360	Bridge E (Pier 17 - 18) - Rebar Fix > Diaphragm + Slab + Pipe install	0	17-Feb-15 A	02-Mar-15 A																
A9370	Bridge E (Pier 17 - 18) - Formworks > Slab	0	02-Mar-15 A	02-Mar-15 A																
A9380	Bridge E (Pier 17 - 18) - Concreting > Diaphragm + Slab	0	03-Mar-15 A	03-Mar-15 A																
A9400	Bridge E (Pier 17 - 18) - Stitching > Reb. Fix + Concretin	0	17-Feb-15 A	16-Mar-15 A																
A9450	Bridge E (Pier 19 - D1) - Rebar Fix > Diaphragm + Slab + Pipe install	0	18-Feb-15 A	07-Mar-15 A																
A9460	Bridge E (Pier 19 - D1) - Formworks > Slab	0	07-Mar-15 A	07-Mar-15 A																

■ Remaining Level of Effort ◆ Milestone
■ Actual Level of Effort
■ Actual Work
■ Remaining Work
■ Critical Remaining Work

Contract HY/2009/19
3 Months Rolling Program (20 May 2015 - 19 Aug 2015)

Activity ID	Activity Name	Remaining Duration	Start	Finish	Total Float	2015																	
						May			June			July			August			September					
						3	10	17	24	31	07	14	21	28	05	12	19	26	02	09	16	23	30
A12990	Saw - Cutting Meddian Barrier (Pier 29-30)	0	05-May-15 A	11-May-15 A		Saw - Cutting Meddian Barrier (Pier 29-30)																	
A12990.1	Saw - Cutting Meddian Barrier (Pier 30-31)	0	12-May-15 A	18-May-15 A		Saw - Cutting Meddian Barrier (Pier 30-31)																	
A12990.2	Saw - Cutting Meddian Barrier (Pier 31-32)	6	19-May-15 A	26-May-15	38	Saw - Cutting Meddian Barrier (Pier 31-32)																	
A13000	Saw - Cutting Meddian Barrier (Pier 32-33)	6	27-May-15	02-Jun-15	67	Saw - Cutting Meddian Barrier (Pier 32-33)																	
A13010	Saw - Cutting Meddian Barrier (Pier 33-34)	6	27-May-15	02-Jun-15	69	Saw - Cutting Meddian Barrier (Pier 33-34)																	
A13040	Saw - Cutting Parapet (Pier 28-29)	0	08-May-15 A	11-May-15 A		Saw - Cutting Parapet (Pier 28-29)																	
A13050	Saw - Cutting Parapet (Pier 29-30)	0	12-May-15 A	15-May-15 A		Saw - Cutting Parapet (Pier 29-30)																	
A13050.1	Saw - Cutting Parapet (Pier 30-31)	0	16-May-15 A	19-May-15 A		Saw - Cutting Parapet (Pier 30-31)																	
A13050.2	Saw - Cutting Parapet (Pier 31-32)	5	20-May-15	25-May-15	39	Saw - Cutting Parapet (Pier 31-32)																	
A13060	Saw - Cutting Parapet (Pier 32-33)	5	26-May-15	30-May-15	66	Saw - Cutting Parapet (Pier 32-33)																	
A13070	Saw - Cutting Parapet (Pier 33-34)	5	01-Jun-15	05-Jun-15	66	Saw - Cutting Parapet (Pier 33-34)																	
A8060	Saw Cutting/Opening of Median Barrier at Existing W/B bridge > (Pier 15-21 & 44-49)	0	16-Mar-15 A	12-Apr-15 A		Median Barrier at Existing W/B bridge > (Pier 15-21 & 44-49)																	
A8060.1	Complete Demolition of Median Barrier at Existing W/B bridge > (Pier 15-21 & 44-49)	0	30-Mar-15 A	15-Apr-15 A		Median Barrier at Existing W/B bridge > (Pier 15-21 & 44-49)																	
A8061	Opening of Median Barrier > (Pier 15-21 & 44-49) - Paving + Rd. marking	0	11-Apr-15 A	18-Apr-15 A		Barrier > (Pier 15-21 & 44-49) - Paving + Rd. marking																	
A8061.1	Install Precast Barrier > (Pier 15-21 & 44-49)	0	13-Apr-15 A	18-Apr-15 A		r > (Pier 15-21 & 44-49)																	
A8061.2	Saw - Cutting of Slab at W/B Bridge (Pier 26-44) - Along Meddian Beams - Part 1	0	15-Nov-14 A	13-Apr-15 A		W/B Bridge (Pier 26-44) - Along Meddian Beams - Part 1																	
10.3 - Middle Bridge (Bridge F)																							
10.3.1 - Pier Construction																							
Abutment D12																							
1031-1058	Abut D12 (Approach Ramp Area) - Reb Fix + Concrete Pour 3	0	27-Dec-14 A	22-Apr-15 A		Abutment D12 (Approach Ramp Area) - Reb Fix + Concrete Pour 3																	
A14460	Complete ABUT D12 at Middle Bridge	45	20-May-15	13-Jul-15	63	Complete ABUT D12 at Middle Bridge																	
10.4 - Bridge Deck Demolition																							
10.4.1 - Existing W/B Bridge (Part 1)																							
A11840	Demolish W/B Bridge Deck Pier 28-29 (7 beams) > by Crane	0	12-May-15 A	19-May-15 A		Demolish W/B Bridge Deck Pier 28-29 (7 beams) > by Crane																	
A11850	Demolish W/B Bridge Deck Pier 29-30 (7 beams) > by Crane	5	21-May-15	27-May-15	23	Demolish W/B Bridge Deck Pier 29-30 (7 beams) > by Crane																	
A11860	Demolish W/B Bridge Pier 29	4	27-May-15	01-Jun-15	23	Demolish W/B Bridge Pier 29																	
A11860.0	Demolish W/B Bridge Deck Pier 30-31 (7 beams) > by Crane	5	01-Jun-15	06-Jun-15	23	Demolish W/B Bridge Deck Pier 30-31 (7 beams) > by Crane																	
A11860.01	Demolish W/B Bridge Pier 30	4	06-Jun-15	11-Jun-15	23	Demolish W/B Bridge Pier 30																	
A11860.02	Demolish W/B Bridge Deck Pier 31-32 (7 beams) > by Crane	5	11-Jun-15	17-Jun-15	24	Demolish W/B Bridge Deck Pier 31-32 (7 beams) > by Crane																	
A11860.03	Demolish W/B Bridge Pier 31	4	17-Jun-15	23-Jun-15	24	Demolish W/B Bridge Pier 31																	
A11860.04	Demolish W/B Bridge Deck Pier 32-33 (7 beams) > by Crane	5	23-Jun-15	29-Jun-15	50	Demolish W/B Bridge Deck Pier 32-33 (7 beams) > by Crane																	
A11860.05	Demolish W/B Bridge Pier 32	4	29-Jun-15	04-Jul-15	50	Demolish W/B Bridge Pier 32																	
A11860.2	Demolish W/B Bridge Deck Pier 33-34 (7 beams) > by Crane	5	25-Jun-15	02-Jul-15	50	Demolish W/B Bridge Deck Pier 33-34 (7 beams) > by Crane																	
A11860.3	Demolish W/B Bridge Pier 33	4	02-Jul-15	07-Jul-15	50	Demolish W/B Bridge Pier 33																	
A11860.4	Excavate + Demolish W/B Bridge Pier 29 > Pile Cap	7	01-Jun-15	09-Jun-15	42	Excavate + Demolish W/B Bridge Pier 29 > Pile Cap																	
A11960	Construct W/B Bridge Pier 29 > Pile Cap	7	09-Jun-15	17-Jun-15	42	Construct W/B Bridge Pier 29 > Pile Cap																	
A11970	Construct W/B Bridge Pier 29 > Column	10	17-Jun-15	30-Jun-15	42	Construct W/B Bridge Pier 29 > Column																	
A11980	Construct W/B Bridge Pier 29 > Rebar Fixing - Crosshead	14	30-Jun-15	17-Jul-15	42	Construct W/B Bridge Pier 29 > Rebar Fixing - Crosshead																	
A11980.1	Construct W/B Bridge Pier 29 > Formworks + Concreting - Crosshead	6	17-Jul-15	24-Jul-15	42	Construct W/B Bridge Pier 29 > Formworks + Con																	
A11990	Construct W/B Bridge Pier 29 > Bearing	5	24-Jul-15	30-Jul-15	42	Construct W/B Bridge Pier 29 > Bearing																	
A12000	Excavate + Demolish W/B Bridge Pier 30 > Pile Cap	7	11-Jun-15	19-Jun-15	23	Excavate + Demolish W/B Bridge Pier 30 > Pile Cap																	
A12010	Construct W/B Bridge Pier 30 > Pile Cap	7	19-Jun-15	29-Jun-15	37	Construct W/B Bridge Pier 30 > Pile Cap																	
A12020	Construct W/B Bridge Pier 30 > Column	10	29-Jun-15	11-Jul-15	37	Construct W/B Bridge Pier 30 > Column																	
A12030	Construct W/B Bridge Pier 30 > Rebar Fixing - Crosshead	14	11-Jul-15	28-Jul-15	37	Construct W/B Bridge Pier 30 > Rebar Fixing																	
A12040	Construct W/B Bridge Pier 30 > Formworks + Concreting - Crosshead	6	28-Jul-15	04-Aug-15	37	Construct W/B Bridge Pier 30 > Form																	
A12050	Construct W/B Bridge Pier 30 > Bearing	5	04-Aug-15	10-Aug-15	37	Construct W/B Bridge Pier 30																	
A12070	Excavate + Demolish W/B Bridge Pier 31 > Pile Cap	7	23-Jun-15	02-Jul-15	24	Excavate + Demolish W/B Bridge Pier 31 > Pile Cap																	
A12080	Construct W/B Bridge Pier 31 > Pile Cap	7	02-Jul-15	10-Jul-15	54	Construct W/B Bridge Pier 31 > Pile Cap																	
A12090	Construct W/B Bridge Pier 31 > Column	10	10-Jul-15	22-Jul-15	54	Construct W/B Bridge Pier 31 > Column																	

Remaining Level of Effort ◆ ◆ Milestone
 Actual Level of Effort
 Actual Work
 Remaining Work
 Critical Remaining Work

Contract HY/2009/19

3 Months Rolling Program (20 May 2015 - 19 Aug 2015)

Activity ID	Activity Name	Remaining Duration	Start	Finish	Total Float	2015																							
						May				June				July				August				September							
						03	10	17	24	31	07	14	21	28	05	12	19	26	02	09	16	23	30						
A12100	Construct W/B Bridge Pier 31 > Rebar Fixing - Crosshead	14	22-Jul-15	07-Aug-15	54																								
A12110	Construct W/B Bridge Pier 31 > Formworks + Concreting - Crosshead	6	07-Aug-15	14-Aug-15	54																								
A12120	Construct W/B Bridge Pier 31 > Bearing	5	14-Aug-15	20-Aug-15	54																								
A12130	Excavate + Demolish W/B Bridge Pier 32 > Pile Cap	7	04-Jul-15	13-Jul-15	50																								
A12140	Construct W/B Bridge Pier 32 > Pile Cap	7	13-Jul-15	21-Jul-15	50																								
A12150	Construct W/B Bridge Pier 32 > Column	10	21-Jul-15	01-Aug-15	50																								
A12160	Construct W/B Bridge Pier 32 > Rebar Fixing - Crosshead	14	01-Aug-15	18-Aug-15	50																								
A12170	Construct W/B Bridge Pier 32 > Formworks + Concreting - Crosshead	6	18-Aug-15	25-Aug-15	50																								
A12180	Construct W/B Bridge Pier 32 > Bearing	5	25-Aug-15	31-Aug-15	50																								
A12190	Excavate + Demolish W/B Bridge Pier 33 > Pile Cap	7	07-Jul-15	15-Jul-15	50																								
A12200	Construct W/B Bridge Pier 33 > Pile Cap	7	15-Jul-15	23-Jul-15	50																								
A12210	Construct W/B Bridge Pier 33 > Column	10	23-Jul-15	04-Aug-15	50																								
A12220	Construct W/B Bridge Pier 33 > Rebar Fixing - Crosshead	14	04-Aug-15	20-Aug-15	50																								
A12230	Construct W/B Bridge Pier 33 > Formworks + Concreting - Crosshead	6	20-Aug-15	27-Aug-15	50																								
A12240	Construct W/B Bridge Pier 33 > Bearing	3	27-Aug-15	31-Aug-15	50																								
A12240.1	Re-Assemble Crane B at Pier 26-27	8	04-Jun-15	12-Jun-15	0																								
A12250	Saw Cutting W/B Bridge Deck Pier 27-28	8	04-Jun-15	12-Jun-15	0																								
A12260	Demolish W/B Bridge Deck Pier 27-28 (7 beams) > by Crane B	9	13-Jun-15	24-Jun-15	0																								
A12270	Demolish W/B Bridge Pier 28 > Column > by Crane C	8	25-Jun-15	04-Jul-15	0																								
A12280	Saw Cutting W/B Bridge Deck Pier 26-27	8	25-Jun-15	04-Jul-15	0																								
A12290	Demolish W/B Bridge Deck Pier 26-27 (7 beams) > by Crane B	9	06-Jul-15	15-Jul-15	0																								
A12300	Demolish W/B Bridge Pier 27 > Column > by Crane C	8	16-Jul-15	24-Jul-15	51																								
A12310	Saw Cutting W/B Bridge Deck Pier 25-26	8	16-Jul-15	24-Jul-15	0																								
A12320	Demolish W/B Bridge Deck Pier 25-26 (7 beams) > by Crane B	9	25-Jul-15	04-Aug-15	0																								
A12330	Demolish W/B Bridge Pier 26 > Column > by Crane C	8	05-Aug-15	13-Aug-15	35																								
A12340	Saw Cutting W/B Bridge Deck Pier 24-25	8	05-Aug-15	13-Aug-15	0																								
A12350	Demolish W/B Bridge Deck Pier 24-25 (7 beams) > by Crane B	9	14-Aug-15	24-Aug-15	0																								
A12360	Demolish W/B Bridge Pier 25 > Column > by Crane C	8	25-Aug-15	02-Sep-15	48																								
A12370	Saw Cutting W/B Bridge Deck Pier 23-24	8	25-Aug-15	02-Sep-15	0																								
A12380	Demolish W/B Bridge Deck Pier 23-24 (7 beams) > by Crane B	9	03-Sep-15	12-Sep-15	0																								
A12390	Demolish W/B Bridge Pier 24 > Column > by Crane C	8	14-Sep-15	22-Sep-15	31																								
A12400	Saw Cutting W/B Bridge Deck Pier 22-23	8	14-Sep-15	22-Sep-15	0																								
A12410	Demolish W/B Bridge Deck Pier 22-23 (7 beams) > by Crane B	9	23-Sep-15	05-Oct-15	0																								
A12820	Erection and Testing 2nos T&C Failed > Pier 29-33	0	27-Apr-15 A	06-May-15 A																									
A12820.1	Erection and Testing 2nos T&C > replacement of Failed 2nos T&C> Pier 29-33	0	14-May-15 A	16-May-15 A																									
A12830	Remove 6th Beam (1nos) By 2 Cranes> Pier 43-44	0	14-May-15 A	14-May-15 A																									
A12850	Remove 6th Beam (2nos) By 2 Cranes > Pier 41-43	0	15-May-15 A	15-May-15 A																									
A12860	Remove 6th Beam (2nos) By 2 Cranes > Pier 39-41	1	20-May-15	20-May-15	0																								
A12870	Remove 6th Beam (2nos) By 2 Cranes > Pier 37-39	1	21-May-15	21-May-15	0																								
A12880	Remove 5th & 6th Beam (5nos) By 2 Cranes > Pier 34-37	2	22-May-15	23-May-15	0																								
A12940	Move Crane - A to Pier 43-44 to Erect LG-1	1	25-May-15	25-May-15	2																								
A12950	Dismantle & Move Crane - B to Pier 26-27 to Start Demolition of Deck	9	25-May-15	03-Jun-15	0																								
A13160	Preparation and Tranport LG1 to 41-44	7	13-May-15 A	27-May-15	0																								
A13160.1	Erect/Assemble LG1 + T&C > Erect Leg Support At Pier 41-44	4	28-May-15	01-Jun-15	0																								
A13160.2	Erect/Assemble LG1 + T&C-A > Istall Main Beam/Girder Support - Middle Span at B	8	02-Jun-15	10-Jun-15	0																								
A13160.3	Erect/Assemble LG1 + T&C-A > Istall Main Beam/Girder Support - End Span at Bay	8	11-Jun-15	19-Jun-15	0																								
A13160.4	Erect/Assemble LG1 + T&C-A > Istall Main Beam/Girder Support - End Span at bay	8	11-Jun-15	19-Jun-15	0																								
A13160.5	Erect/Assemble LG1 + T&C-A > Istall Mounting Support & Cables	4	22-Jun-15	25-Jun-15	0																								
A13160.6	Erect/Assemble LG1 + T&C-A > Istall Miscellaneous Parts & support	4	26-Jun-15	30-Jun-15	0																								

- Remaining Level of Effort
- Actual Level of Effort
- Actual Work
- Remaining Work
- Critical Remaining Work
- Milestone

Contract HY/2009/19

3 Months Rolling Program (20 May 2015 - 19 Aug 2015)

Activity ID	Activity Name	Remaining Duration	Start	Finish	Total Float	2015																				
						May			June			July			August						September					
						3	10	17	24	31	07	14	21	28	05	12	19	26	02	09	16	23	30			
A13160.7	Demolish W/B Bridge Deck Pier 43 to 44 (5 beams) > by LG1	6	02-Jul-15	08-Jul-15	0	Demolish W/B Bridge Deck Pier 43 to 44 (5 beams) > by LG1																				
A13650	Demolish Temp. W/B Bridge - Deck > Pier 42 to 43 (6 beams)	6	09-Jul-15	15-Jul-15	0	Demolish Temp. W/B Bridge - Deck > Pier 42 to 43 (6 beams)																				
A13660	Demolish Temp. W/B Bridge - Crosshead & Pier > Pier 43	14	16-Jul-15	31-Jul-15	0	Demolish Temp. W/B Bridge - Crosshead & Pier > Pier 43																				
A13670	Demolish Temp. W/B Bridge - Deck > Pier 41 to 42 (6 beams)	6	25-Jul-15	31-Jul-15	0	Demolish Temp. W/B Bridge - Deck > Pier 41 to 42 (6 beams)																				
A13680	Demolish Temp. W/B Bridge - Crosshead & Pier > Pier 42	6	01-Aug-15	07-Aug-15	0	Demolish Temp. W/B Bridge - Crosshead & Pier > Pier 42																				
A13690	Demolish Temp. W/B Bridge - Deck > Pier 40 to 41 (6 beams)	6	01-Aug-15	07-Aug-15	0	Demolish Temp. W/B Bridge - Deck > Pier 40 to 41 (6 beams)																				
A13700	Demolish Temp. W/B Bridge - Crosshead & Pier > Pier 41	14	08-Aug-15	24-Aug-15	0	Demolish Temp. W/B Bridge - Crosshead & Pier > Pier 41																				
A13710	Demolish Temp. W/B Bridge - Deck > Pier 39 to 40 (6 beams)	6	18-Aug-15	24-Aug-15	0	Demolish Temp. W/B Bridge - Deck > Pier 39 to 40 (6 beams)																				
A13720	Demolish Temp. W/B Bridge - Crosshead & Pier > Pier 40	6	25-Aug-15	31-Aug-15	0	Demolish Temp. W/B Bridge - Crosshead & Pier > Pier 40																				
A13730	Demolish Temp. W/B Bridge - Deck > Pier 38 to 39 (6 beams)	6	25-Aug-15	31-Aug-15	0	Demolish Temp. W/B Bridge - Deck > Pier 38 to 39 (6 beams)																				
A8079.1	Pier 28 Erect Falsework at existing W/B Bridge prior to demolition	0	23-Apr-15 A	30-Apr-15 A		Pier 28 Erect Falsework at existing W/B Bridge prior to demolition																				
A8079.11	Pier 29 Erect Falsework at existing W/B Bridge prior to demolition	0	30-Mar-15 A	09-Apr-15 A		Pier 29 Erect Falsework at existing W/B Bridge prior to demolition																				
A8079.12	Pier 30 Erect Falsework at existing W/B Bridge prior to demolition	0	26-Feb-15 A	07-Mar-15 A		Pier 30 Erect Falsework at existing W/B Bridge prior to demolition																				
A8079.14	Pier 32 Erect Falsework at existing W/B Bridge prior to demolition	0	13-Apr-15 A	27-Apr-15 A		Pier 32 Erect Falsework at existing W/B Bridge prior to demolition																				
A8079.15	Pier 33 Erect Falsework at existing W/B Bridge prior to demolition	0	11-Mar-15 A	01-Apr-15 A		Pier 33 Erect Falsework at existing W/B Bridge prior to demolition																				
A8079.16	Pier 34 Erect Falsework at existing W/B Bridge prior to demolition	0	11-Apr-15 A	13-Apr-15 A		Pier 34 Erect Falsework at existing W/B Bridge prior to demolition																				
A8079.18	Pier 27 Erect Falsework at existing W/B Bridge prior to demolition	0	09-Mar-15 A	16-Mar-15 A		Pier 27 Erect Falsework at existing W/B Bridge prior to demolition																				
A8079.19	Pier 26 Erect Falsework at existing W/B Bridge prior to demolition	0	04-Mar-15 A	09-Mar-15 A		Pier 26 Erect Falsework at existing W/B Bridge prior to demolition																				
A8079.2	Pier 25 Erect Falsework at existing W/B Bridge prior to demolition	6	20-May-15	26-May-15	39	Pier 25 Erect Falsework at existing W/B Bridge prior to demolition																				
A8079.21	Pier 24 Erect Falsework at existing W/B Bridge prior to demolition	6	26-May-15	01-Jun-15	39	Pier 24 Erect Falsework at existing W/B Bridge prior to demolition																				
A8079.22	Pier 23 Erect Falsework at existing W/B Bridge prior to demolition	6	01-Jun-15	06-Jun-15	39	Pier 23 Erect Falsework at existing W/B Bridge prior to demolition																				
A8079.3	Pier 22 Erect Falsework at existing W/B Bridge prior to demolition	6	06-Jun-15	12-Jun-15	85	Pier 22 Erect Falsework at existing W/B Bridge prior to demolition																				
10.4.2 - Existing E/B Bridge																										
A12660.1	Demolition (Pier E4 - Pier E3) - Mobilization and Prep.	3	29-Jun-15	02-Jul-15	16	Demolition (Pier E4 - Pier E3) - Mobilization and Prep.																				
A12660.2	Demolition (Pier E4 - Pier E3) - Saw-Cut Deck/Slab	7	03-Jul-15	10-Jul-15	16	Demolition (Pier E4 - Pier E3) - Saw-Cut Deck/Slab																				
A12660.3	Demolition (Pier E4 - Pier E3) -Remove Pre-Cast Beam (3nos)	6	11-Jul-15	17-Jul-15	16	Demolition (Pier E4 - Pier E3) -Remove Pre-Cast Beam (3nos)																				
A12660.4	Demolition (Pier E4 - Pier E3) -Saw-Cut Crosshead + Pier(Pier E3)	1	18-Jul-15	18-Jul-15	16	Demolition (Pier E4 - Pier E3) -Saw-Cut Crosshead + Pier(Pier E3)																				
A12660.5	Demolition (Pier E4 - Pier E3) -Demolish Pile Cap + Pile Trimming(Pier E3)	8	20-Jul-15	28-Jul-15	16	Demolition (Pier E4 - Pier E3) -Demolish Pile Cap + Pile Trimming(Pier E3)																				
A12660.6	Demolition (TA1 & Pier E4 - Pier E3) > Preparation for Demolition/Saw Cutting, Etc.	11	29-Jun-15	11-Jul-15	0	Demolition (TA1 & Pier E4 - Pier E3) > Preparation for Demolition/Saw Cutting, Etc.																				
A12660.7	Demolition (Pier E4 - Pier E3) > Remove 6 Beams, Crosshead & Pier A3	12	13-Jul-15	25-Jul-15	0	Demolition (Pier E4 - Pier E3) > Remove 6 Beams, Crosshead & Pier A3																				
A12660.8	Demolition (Pier E4 - Pier E3) > Remove Pile Cap Pier A3	10	27-Jul-15	06-Aug-15	0	Demolition (Pier E4 - Pier E3) > Remove Pile Cap Pier A3																				
A12660.9	Demolition (TA1) > Deck & Steel Tower Removal	14	01-Aug-15	17-Aug-15	18	Demolition (TA1) > Deck & Steel Tower Removal																				
A12670	Construction (Pier E4 - Pier E2) > Construct Pile Cap at Pier E3	10	07-Aug-15	18-Aug-15	0	Construction (Pier E4 - Pier E2) > Construct Pile Cap at Pier E3																				
A12680	Construction (Pier E4 - Pier E2) > Construct Pier E3	10	19-Aug-15	29-Aug-15	0	Construction (Pier E4 - Pier E2) > Construct Pier E3																				
A12770	Construction (Pier E4 - Pier E2) > Construct Parapet D1-E2	10	18-Aug-15	28-Aug-15	53	Construction (Pier E4 - Pier E2) > Construct Parapet D1-E2																				
10.5 - Temporary Bridge																										
10.5.1 - Temporary Bridge 'TA'																										
1051-2036	Temporary Bridge TA1 Removal	16	29-Jul-15	15-Aug-15	16	Temporary Bridge TA1																				
A10750	TA2-(Pier TA21-22) > Intall Bearing	0	19-Mar-15 A	09-Apr-15 A		TA2-(Pier TA21-22) > Intall Bearing																				
A10760	TA2-(Pier TA21-22) > Parapet Removal @ Bridge E	0	25-Mar-15 A	30-Mar-15 A		TA2-(Pier TA21-22) > Parapet Removal @ Bridge E																				
A10770	TA2-(Pier TA21-22) > Main Beam Fabrication (TA21-22) > Batch 1	0	31-Mar-15 A	08-Apr-15 A		TA2-(Pier TA21-22) > Main Beam Fabrication (TA21-22) > Batch 1																				
A10780	TA2-(Pier TA21-22) > Main Beam Erection > Batch 1	0	10-Apr-15 A	10-Apr-15 A		TA2-(Pier TA21-22) > Main Beam Erection > Batch 1																				
A10790	TA2-(Pier TA21-22) > Main Beam Fabrication (TA21-22) > Batch 2	0	11-Apr-15 A	17-Apr-15 A		TA2-(Pier TA21-22) > Main Beam Fabrication (TA21-22) > Batch 2																				
A10800	TA2-(Pier TA21-22) > Main Beam Erection > Batch 2	0	17-Apr-15 A	18-Apr-15 A		TA2-(Pier TA21-22) > Main Beam Erection > Batch 2																				
A10810	TA2-(Pier TA21-22) > Intall Bondeck	0	18-Apr-15 A	24-Apr-15 A		TA2-(Pier TA21-22) > Intall Bondeck																				
A10820	TA2-(Pier TA21-22) > Deck Rebar Fixing	0	25-Apr-15 A	11-May-15 A		TA2-(Pier TA21-22) > Deck Rebar Fixing																				
A10830	TA2-(Pier TA21-22) > Intall Holding Down Bolts for L3 Railings	0	04-May-15 A	11-May-15 A		TA2-(Pier TA21-22) > Intall Holding Down Bolts for L3 Railings																				
A10840	TA2-(Pier TA21-22) > Deck Concreting	1	20-May-15	20-May-15	28	TA2-(Pier TA21-22) > Deck Concreting																				
A10850	TA2-(Pier TA21-22) > Intall L3 Railings	3	21-May-15	23-May-15	28	TA2-(Pier TA21-22) > Intall L3 Railings																				

	Remaining Level of Effort		Milestone
	Actual Level of Effort		
	Actual Work		
	Remaining Work		
	Critical Remaining Work		

Contract HY/2009/19

3 Months Rolling Program (20 May 2015 - 19 Aug 2015)

Activity ID	Activity Name	Remaining Duration	Start	Finish	Total Float	2015																		
						May			June			July			August			September						
						3	10	17	24	31	07	14	21	28	05	12	19	26	02	09	16	23	30	
A10860	TA2-(Pier TA22-23) > Install TA23 Tower	2	19-May-15 A	21-May-15	0																			
A10870	TA2-(Pier TA22-23) > Intall Scaffolding at TA23	3	22-May-15	25-May-15	0																			
A10880	TA2-(Pier TA22-23) > TA23 Grouting	3	26-May-15	28-May-15	0																			
A10890	TA2-(Pier TA22-23) > Intall Bearing	4	29-May-15	02-Jun-15	0																			
A10900	TA2-(Pier TA22-23) > Main Beam Fabrication (TA22-23)	6	22-May-15	28-May-15	5																			
A10910	TA2-(Pier TA22-23) > Main Beam Erection	1	03-Jun-15	03-Jun-15	0																			
A10920	TA2-(Pier TA22-23) > Install Bondeck	6	04-Jun-15	10-Jun-15	0																			
A10930	TA2-(Pier TA22-23) > Deck Rebar Fixing	6	11-Jun-15	17-Jun-15	0																			
A10940	TA2-(Pier TA22-23) > Holding Down Bolts for L3 Railings	2	17-Jun-15	18-Jun-15	0																			
A10950	TA2-(Pier TA22-23) > Deck Concreting	1	19-Jun-15	19-Jun-15	0																			
A10950.1	MJ-28	3	22-Jun-15	24-Jun-15	0																			
A10960	TA2-(Pier TA22-23) > L3 Railings	3	22-Jun-15	24-Jun-15	2																			
A10960.1	Aspaht TA21-TA28	1	25-Jun-15	25-Jun-15	0																			
A10960.2	Road Marking + Istall Lightings	1	26-Jun-15	26-Jun-15	0																			
A11210	TA2-(Pier TA23-24) > Install TA24 Tower	0	09-May-15 A	13-May-15 A																				
A11220	TA2-(Pier TA23-24) > Intall Scaffolding at TA24	0	12-May-15 A	13-May-15 A																				
A11230	TA2-(Pier TA23-24) > TA24 Grouting	3	22-May-15	26-May-15	3																			
A11240	TA2-(Pier TA23-24) > Intall Bearing	4	26-May-15	30-May-15	3																			
A11250	TA2-(Pier TA23-24) > Main Beam Fabrication (TA23-24)	6	22-May-15	29-May-15	5																			
A11260	TA2-(Pier TA23-24) > Main Beam Erection	1	03-Jun-15	03-Jun-15	0																			
A11270	TA2-(Pier TA23-24) > Install Bondeck	6	04-Jun-15	10-Jun-15	0																			
A11280	TA2-(Pier TA23-24) > Deck Rebar Fixing	6	11-Jun-15	17-Jun-15	0																			
A11290	TA2-(Pier TA23-24) > Holding Down Bolts for L3 Railings	2	17-Jun-15	18-Jun-15	0																			
A11300	TA2-(Pier TA23-24) > Deck Concreting	1	19-Jun-15	19-Jun-15	0																			
A11300.1	MJ-28	3	22-Jun-15	24-Jun-15	0																			
A11310	TA2-(Pier TA23-24) > L3 Railings	3	22-Jun-15	24-Jun-15	2																			
A11310.1	Aspaht TA21-TA28	1	25-Jun-15	25-Jun-15	0																			
A11310.2	Road Marking + Istall Lightings	1	26-Jun-15	26-Jun-15	0																			
A11320	TA2-(Pier TA24-25) > Install TA25 Tower	0	07-Apr-15 A	09-Apr-15 A																				
A11330	TA2-(Pier TA24-25) > Intall Scaffolding at TA25	0	23-Apr-15 A	25-Apr-15 A																				
A11340	TA2-(Pier TA24-25) > TA25 Grouting	0	23-Apr-15 A	25-Apr-15 A																				
A11350	TA2-(Pier TA24-25) > Intall Bearing	0	23-Apr-15 A	26-Apr-15 A																				
A11360	TA2-(Pier TA24-25) > Main Beam Fabrication (TA24-25)	6	23-Apr-15 A	26-May-15	7																			
A11370	TA2-(Pier TA24-25) > Main Beam Erection	1	30-May-15	01-Jun-15	3																			
A11380	TA2-(Pier TA24-25) > Install Bondeck	6	01-Jun-15	08-Jun-15	3																			
A11390	TA2-(Pier TA24-25) > Deck Rebar Fixing	6	08-Jun-15	15-Jun-15	3																			
A11400	TA2-(Pier TA24-25) > Holding Down Bolts for L3 Railings	2	13-Jun-15	16-Jun-15	3																			
A11410	TA2-(Pier TA24-25) > Deck Concreting	1	16-Jun-15	17-Jun-15	3																			
A11410.1	MJ-28	3	17-Jun-15	22-Jun-15	3																			
A11420	TA2-(Pier TA24-25) > L3 Railings	3	17-Jun-15	22-Jun-15	5																			
A11420.0	Aspaht TA21-TA28	1	22-Jun-15	23-Jun-15	3																			
A11420.01	Road Marking + Istall Lightings	1	23-Jun-15	24-Jun-15	3																			
A11430	TA2-(Pier TA25-26) > Install TA26 Tower	0	03-Apr-15 A	05-Apr-15 A																				
A11440	TA2-(Pier TA25-26) > Intall Scaffolding at TA26	0	20-Apr-15 A	22-Apr-15 A																				
A11450	TA2-(Pier TA25-26) > TA26 Grouting	0	20-Apr-15 A	22-Apr-15 A																				
A11460	TA2-(Pier TA25-26) > Intall Bearing	0	23-Apr-15 A	26-Apr-15 A																				
A11470	TA2-(Pier TA25-26) > Main Beam Fabrication (TA25-26)	0	23-Apr-15 A	02-May-15 A																				
A11480	TA2-(Pier TA25-26) > Main Beam Erection	0	01-May-15 A	03-May-15 A																				
A11490	TA2-(Pier TA25-26) > Install Bondeck	6	30-Apr-15 A	29-May-15	11																			

- Remaining Level of Effort
- Actual Level of Effort
- Actual Work
- Remaining Work
- Critical Remaining Work

Contract HY/2009/19

3 Months Rolling Program (20 May 2015 - 19 Aug 2015)

Activity ID	Activity Name	Remaining Duration	Start	Finish	Total Float	2015																		
						May			June				July			August				Number				
						3	10	17	24	31	07	14	21	28	05	12	19	26	02	09	16	23	30	
A11500	TA2-(Pier TA25-26) > Deck Rebar Fixing	6	29-May-15	05-Jun-15	11																			
A11510	TA2-(Pier TA25-26) > Holding Down Bolts for L3 Railings	2	04-Jun-15	06-Jun-15	11																			
A11520	TA2-(Pier TA25-26) > Deck Concreting	1	06-Jun-15	08-Jun-15	11																			
A11520.1	MJ-28	3	08-Jun-15	11-Jun-15	11																			
A11530	TA2-(Pier TA25-26) > L3 Railings	3	08-Jun-15	11-Jun-15	13																			
A11530.1	Aspaht TA21-TA28	1	11-Jun-15	12-Jun-15	11																			
A11530.2	Road Marking + Istall Lightings	1	12-Jun-15	13-Jun-15	11																			
A11540	TA2-(Pier TA26-27) > Install TA27 Tower	0	25-Mar-15 A	27-Mar-15 A																				
A11550	TA2-(Pier TA26-27) > Intall Scaffolding at TA27	0	17-Apr-15 A	19-Apr-15 A																				
A11560	TA2-(Pier TA26-27) > TA27 Grouting	0	17-Apr-15 A	19-Apr-15 A																				
A11570	TA2-(Pier TA26-27) > Intall Bearing	0	20-Apr-15 A	23-Apr-15 A																				
A11580	TA2-(Pier TA26-27) > Main Beam Fabrication (TA26-27)	0	21-Apr-15 A	29-Apr-15 A																				
A11590	TA2-(Pier TA26-27) > Main Beam Erection	0	01-May-15 A	03-May-15 A																				
A11600	TA2-(Pier TA26-27) > Install Bondeck	0	02-May-15 A	09-May-15 A																				
A11610	TA2-(Pier TA26-27) > Deck Rebar Fixing	6	12-May-15 A	26-May-15	24																			
A11620	TA2-(Pier TA26-27) > Holding Down Bolts for L3 Railings	2	20-May-15	21-May-15	24																			
A11630	TA2-(Pier TA26-27) > Deck Concreting	1	22-May-15	22-May-15	24																			
A11630.1	MJ-28	3	23-May-15	26-May-15	24																			
A11640	TA2-(Pier TA26-27) > L3 Railings	3	23-May-15	26-May-15	26																			
A11640.0	Aspaht TA21-TA28	1	27-May-15	27-May-15	24																			
A11640.01	Road Marking + Istall Lightings	1	28-May-15	28-May-15	24																			
A11640.1	TA2-(Pier TA27-28) > Preparation works for R.C Wall	0	16-Apr-15 A	18-Apr-15 A																				
A11640.2	TA2-(Pier TA27-28) > Rebar Fixing on R.C Wall	0	19-Apr-15 A	01-May-15 A																				
A11640.3	TA2-(Pier TA27-28) > Formawork on R.C Wall	0	02-May-15 A	08-May-15 A																				
A11640.4	TA2-(Pier TA27-28) > Concreting on R.C Wall	0	09-May-15 A	09-May-15 A																				
A11640.5	TA2-(Pier TA27-28) > Waterproofing for Tunnel Roof	2	20-May-15	21-May-15	1																			
A11640.6	TA2-(Pier TA27-28) > Soil Backfill to Ground Level	5	20-May-15	25-May-15	1																			
A11640.7	TA2-(Pier TA27-28) > Formwork on TA28 Footing	2	20-May-15	21-May-15	1																			
A11640.8	TA2-(Pier TA27-28) > Rebar Fixing on TA28 Footing	2	20-May-15	21-May-15	1																			
A11640.9	TA2-(Pier TA27-28) > Install Holding Down Bolts on TA28	1	22-May-15	22-May-15	1																			
A11640.91	TA2-(Pier TA27-28) > Concreting on TA28	1	23-May-15	23-May-15	1																			
A11650	TA2-(Pier TA27-28) > Installation of TA28 Tower	1	25-May-15	25-May-15	1																			
A11660	TA2-(Pier TA27-28) > Intall Scaffolding at TA28	3	26-May-15	28-May-15	1																			
A11670	TA2-(Pier TA27-28) > TA28 Grouting	1	29-May-15	29-May-15	1																			
A11680	TA2-(Pier TA27-28) > Intall Bearing	2	30-May-15	01-Jun-15	1																			
A11690	TA2-(Pier TA27-28) > Main Beam Fabrication (TA27-28)	6	26-May-15	01-Jun-15	2																			
A11700	TA2-(Pier TA27-28) > Main Beam Erection	1	02-Jun-15	02-Jun-15	1																			
A11710	TA2-(Pier TA27-28) > Install Bondeck	4	03-Jun-15	06-Jun-15	1																			
A11720	TA2-(Pier TA27-28) > Deck Rebar Fixing	9	08-Jun-15	17-Jun-15	1																			
A11730	TA2-(Pier TA27-28) > Holding Down Bolts for L3 Railings	2	16-Jun-15	17-Jun-15	1																			
A11740	TA2-(Pier TA27-28) > Deck Concreting	1	18-Jun-15	18-Jun-15	1																			
A11740.1	MJ-28	3	19-Jun-15	23-Jun-15	1																			
A11750	TA2-(Pier TA27-28) > L3 Railings	3	19-Jun-15	23-Jun-15	3																			
A11750.3	Aspaht TA21-TA28	1	24-Jun-15	24-Jun-15	1																			
A11750.4	Road Marking + Istall Lightings	1	25-Jun-15	25-Jun-15	1																			
A11760	Complete Temporary "TA2" Bridge	0		26-Jun-15	0																			
10.5.2 - Temporary Bridge 'TB'																								
A10280	TB > (Pier 16-17) - Stitching	0	02-Mar-15 A	02-Mar-15 A																				
A10290	TB > (Pier TB1-16) - L3 Railing Installation	0	03-Mar-15 A	06-Mar-15 A																				

- █ Remaining Level of Effort ◆ ◆ Milestone
- █ Actual Level of Effort
- █ Actual Work
- █ Remaining Work
- █ Critical Remaining Work

Contract HY/2009/19

3 Months Rolling Program (20 May 2015 - 19 Aug 2015)

Activity ID	Activity Name	Remaining Duration	Start	Finish	Total Float	2015																
						May			June				July				August					
						3	10	17	24	31	07	14	21	28	05	12	19	26	02	09	16	23
A10300	Bridge E (Pier 16) - MJ	0	17-Mar-15 A	22-Mar-15 A																		
A2480	TB > (Pier TB1-16) - L3 Railing Installation	0	06-Mar-15 A	09-Mar-15 A																		
10.6 - Tunnel Approach Ramp																						
10.6.1 - Approach Ramp (Excluding Portion IIB)																						
Bored Piles																						
A5851	Bored Pile Ramp - BN25	0	10-Feb-15 A	25-Feb-15 A																		
A5856	Bored Pile Ramp > LHR- BN32 A	0	24-Mar-15 A	11-Apr-15 A	32 A																	
A5856.1	Bored Pile Ramp > LHR- BN32 B	0	20-Mar-15 A	31-Mar-15 A																		
A5857	Bored Pile Ramp > LHR - BN34 A	0	19-Mar-15 A	10-Apr-15 A	34 A																	
A5857.1	Bored Pile Ramp > LHR - BN34 B	0	17-Mar-15 A	01-Apr-15 A																		
A5859.21	Bored Pile Ramp - BN20	0	17-Feb-15 A	11-Mar-15 A																		
A5859.22	Bored Pile Ramp - BN21	0	13-Mar-15 A	26-Mar-15 A																		
A5859.24	Bored Pile Ramp - BS21	0	26-Feb-15 A	14-Mar-15 A																		
A5859.35	LHR - Pre Bored H-Pile > Pile Ramp - BN17 A	0	15-Apr-15 A	27-Apr-15 A																		
A5859.35.1	LHR - Pre Bored H-Pile > Pile Ramp - BN17 B	0	17-Apr-15 A	05-May-15 A																		
A5859.36	LHR - Pre Bored H-Pile > Pile Ramp - BN18 A	0	18-Apr-15 A	25-Apr-15 A																		
A5859.36.1	LHR - Pre Bored H-Pile > Pile Ramp - BN18 B	0	22-Apr-15 A	02-May-15 A																		
A5859.36.1.1	LHR - Pre Bored H-Pile > Pile Ramp - BN14 A	14	20-May-15	04-Jun-15	48																	
A5859.36.1.2	LHR - Pre Bored H-Pile > Pile Ramp - BN14 B	14	25-May-15	09-Jun-15	48																	
A5859.36.1.3	LHR - Pre Bored H-Pile > Pile Ramp - BN15 A	14	30-Jun-15*	16-Jul-15	32																	
A5859.36.1.4	LHR - Pre Bored H-Pile > Pile Ramp - BN15 B	14	06-Jul-15	21-Jul-15	32																	
A5859.36.2	LHR - Pre Bored H-Pile > Pile Ramp - BN16 A	14	10-Jul-15	25-Jul-15	32																	
A5859.36.3	LHR - Pre Bored H-Pile > Pile Ramp - BN16 B	14	15-Jul-15	30-Jul-15	32																	
A5859.36.4	Pre Bored H-Pile > Pile Ramp - BM07 A	14	20-Jul-15	04-Aug-15	32																	
A5859.36.5	Pre Bored H-Pile > Pile Ramp - BM07 B	14	24-Jul-15	08-Aug-15	32																	
A5859.36.6	Pre Bored H-Pile > Pile Ramp - BM08 A	14	29-Jul-15	13-Aug-15	32																	
A5859.36.7	Pre Bored H-Pile > Pile Ramp - BM08 B	14	03-Aug-15	18-Aug-15	32																	
A5859.36.8	Pre Bored H-Pile > Pile Ramp - BM06 A	14	07-Aug-15	22-Aug-15	32																	
A5859.36.9	Pre Bored H-Pile > Pile Ramp - BM06 B	14	12-Aug-15	27-Aug-15	32																	
A5859.36.9.1	Pre Bored H-Pile > Pile Ramp - BM05 A	14	17-Aug-15	01-Sep-15	32																	
A5859.36.9.2	Pre Bored H-Pile > Pile Ramp - BM05 B	14	21-Aug-15	05-Sep-15	32																	
A5859.36.9.3	Pre Bored H-Pile > Pile Ramp - BM04 A	14	26-Aug-15	10-Sep-15	32																	
A5859.36.9.4	Pre Bored H-Pile > Pile Ramp - BM04 B	14	31-Aug-15	15-Sep-15	32																	
A5859.36.9.9	Pre Bored H-Pile > Pile Ramp - BS16 A	14	14-Sep-15	30-Sep-15	32																	
A5859.36.9.9.1	Pre Bored H-Pile > Pile Ramp - BS16 B	14	18-Sep-15	06-Oct-15	32																	
A5859.36.9.9.2	Pre Bored H-Pile > Pile Ramp - BS15 A	14	23-Sep-15	10-Oct-15	32																	
A5859.36.9.9.3	Pre Bored H-Pile > Pile Ramp - BS15 B	14	29-Sep-15	15-Oct-15	32																	
A5859.36.9.9.4	Pre Bored H-Pile > Pile Ramp - BS14 A	14	05-Oct-15	20-Oct-15	32																	
A5859.36.9.9.5	Pre Bored H-Pile > Pile Ramp - BS14 B	14	09-Oct-15	26-Oct-15	32																	
A5859.37	Complete Bored Piles Excl. Portion IIB	0		26-Oct-15	32																	
A5859.37.1	Complete Bored Piles > LHR	0		30-Jul-15	104																◆	
A8050	Complete Pre-Bored H-Pile > CSD Approach Ramp	0		20-May-15	44																◆	
ELS																						
1061-1065	Drive Sheet Pile for Trough A & B (excl IIB) - Appr. Ramp > Pier D11-D12 Northern	14	20-May-15	04-Jun-15	251																	
1061-1065.2	Drive Sheet Pile for Trough A & B (excl IIB) - Appr. Ramp > Pier D11-D10 Northern	14	05-Jun-15	22-Jun-15	251																	
1061-1065.3	Drive Sheet Pile for Trough A & B (excl IIB) - Appr. Ramp > Pier D10-D09 Northern	14	23-Jun-15	09-Jul-15	251																	
1061-1065.4	Drive Sheet Pile for Trough A & B (excl IIB) - Appr. Ramp > Pier D09-D08 Northern	14	10-Jul-15	25-Jul-15	251																	
1061-1065.5	Drive Sheet Pile for Trough A & B (excl IIB) - Appr. Ramp > Pier D08-D07 Northern	14	27-Jul-15	11-Aug-15	251																	
1061-1065.6	Drive Sheet Pile for Trough A & B (excl IIB) - Appr. Ramp > Pier D07-D06 Northern	14	12-Aug-15	27-Aug-15	251																	

- Remaining Level of Effort ◆ ◆ Milestone
- Actual Level of Effort
- Actual Work
- Remaining Work
- Critical Remaining Work

Contract HY/2009/19

3 Months Rolling Program (20 May 2015 - 19 Aug 2015)

Activity ID	Activity Name	Remaining Duration	Start	Finish	Total Float	2015																		
						May			June			July			August			September						
						3	10	17	24	31	07	14	21	28	05	12	19		26	02	09	16	23	30
1061-1065.6.1	Drive Sheet Pile for Trough A & B (excl IIB) - Appr. Ramp > Pier D11-D12 Southern	14	20-May-15	04-Jun-15	251																			
1061-1065.6.2	Drive Sheet Pile for Trough A & B (excl IIB) - Appr. Ramp > Pier D11-D10 Southern	14	05-Jun-15	22-Jun-15	251																			
1061-1065.6.3	Drive Sheet Pile for Trough A & B (excl IIB) - Appr. Ramp > Pier D10-D09 Southern	14	23-Jun-15	09-Jul-15	251																			
1061-1065.6.4	Drive Sheet Pile for Trough A & B (excl IIB) - Appr. Ramp > Pier D09-D08 Southern	14	10-Jul-15	25-Jul-15	251																			
1061-1065.6.5	Drive Sheet Pile for Trough A & B (excl IIB) - Appr. Ramp > Pier D08-D07 Southern	14	27-Jul-15	11-Aug-15	251																			
1061-1065.6.6	Drive Sheet Pile for Trough A & B (excl IIB) - Appr. Ramp > Pier D07-D06 Southern	14	12-Aug-15	27-Aug-15	251																			
1061-1068	Install & Operate Dewatering System (excl IIB) - Appr. Ramp > Pier D06-D08	14	27-May-15	11-Jun-15	287																			
1061-1068.1	Install & Operate Dewatering System (excl IIB) - Appr. Ramp > Pier D08-D10	14	12-Jun-15	29-Jun-15	287																			
1061-1068.2	Install & Operate Dewatering System (excl IIB) - Appr. Ramp > Pier D10-D12	14	30-Jun-15	16-Jul-15	287																			
Structure																								
1061-1200	Construct Retaining Wall E Pile Cap (7 nos)	28	03-Jun-15	07-Jul-15	32																			
1061-1210	Construct Retaining Wall E Bay 1	18	08-Jul-15	28-Jul-15	32																			
1061-1230	Construct Retaining Wall E Bay 3	18	08-Jul-15	28-Jul-15	50																			
Landscape Deck																								
A8260	Construct LD Middle Pile Cap (7nos)	24	08-Jul-15	04-Aug-15	44																			
10.6.2 - Approach Ramp (Within Portion IIB)																								
Bored Piles																								
1061-1045	LHR - Pre Bored H-Pile > Pile Ramp - BN01 A	14	26-Aug-16	12-Sep-16	221																			
1061-1046	LHR - Pre Bored H-Pile > Pile Ramp - BN01 B	14	12-Sep-16	29-Sep-16	221																			
1061-1047	LHR - Pre Bored H-Pile > Pile Ramp - BN05 A	14	29-Sep-16	18-Oct-16	221																			
10.7 - Section X - Miscellaneous Works																								
10.7.1 - TTM Stages																								
1071-1025	TTM Stage 2 - TMLG / TD / Police Consultation and Endorsement	0	29-Sep-14 A	27-Mar-15 A																				
1071-1030	TTM Stage 2 - TTM Enabling Works	0	27-Mar-15 A	29-Mar-15 A																				
1071-1040	TTM Stage 2 - Divert 3 Lanes to E/B Bridge through 'Bridge From Pier17 to Pier D1'	0		29-Mar-15 A																				
1071-1041	TTM Stage 3 - TMLG / TD / Police Consultation and Endorsement	0	30-Mar-15 A	18-Apr-15 A																				
1071-1042	TTM Stage 3 - TTM Enabling Works	0	19-Apr-15 A	19-Apr-15 A																				
1071-1043	TTM Stage 3 - Use Existing E/B Lane to Divert 4 W/B Lane	0		19-Apr-15 A																				
1071-1045	TTM Stage 4 - TMLG / TD / Police Consultation and Endorsement	32	20-May-15	26-Jun-15	0																			
1071-1046	TTM Stage 4 - TTM Enabling Works	2	27-Jun-15	28-Jun-15	0																			
1071-1047	TTM Stage 4 - Hing Fat Slip Road Divert 1 Lane to New E/B Bridge through 'TA2' to	0		28-Jun-15	0																			
10.7.2 - Oil Street/Watson Road (Portion III)																								
A12510	Box Culvert Demolition > Portion VIIB > Watson Road	0	01-Apr-15 A	07-Apr-15 A																				
A12520	Box Culvert Demolition - Concrete Pavement Removal > Portion VIIB > Watson Ro	0	08-Apr-15 A	14-Apr-15 A																				
A12530	Box Culvert Demolition - Trial Trench to Expose Grd. Utilities > Portion VIIB > Watson	0	15-Apr-15 A	19-Apr-15 A																				
A12540	Box Culvert Demolition - Dem. Upper portion of Culvert (2M From R.L.) > Portion v	0	20-Apr-15 A	30-Apr-15 A																				
A12550	Box Culvert Demolition - Remove Mud Deposit from Culvert > Portion VIIB > Watso	0	01-May-15 A	07-May-15 A																				
A12560	Box Culvert Demolition - Backfilling > Portion VIIB > Watson Road	0	08-May-15 A	22-May-15	525																			
A12570	Drainage works - Manhole 1-49B, DN450 & Associate Gully Pipes > Portion VIIB > W	0	05-May-15 A	15-May-15 A																				
A12590	Drainage works - Manhole 1-49, DN300 & Associate Gully Pipes > Portion VIIB > Wa	5	15-May-15 A	28-May-15	525																			
A12600	Drainage works - Manhole 1-49C, DN225 & Associate Gully Pipes > Portion VIIB > W	10	28-May-15	09-Jun-15	525																			
A12610	Drainage works - Road Reinstatement > Portion VIIB > Watson Road	5	09-Jun-15	15-Jun-15	525																			

- █ Remaining Level of Effort
- █ Actual Level of Effort
- █ Actual Work
- █ Remaining Work
- █ Critical Remaining Work

Contract HY/2009/19

3 Months Rolling Program (20 May 2015 - 19 Aug 2015)

WP13-0		Layout: CWB - Working Layout for DWP Rev M					Date Printed 26-Sep-14 11						
Activity ID	Activity Name	Calendar	Original Duration	Start	Finish	Total Float	2015				2016		
							Q4	Q1	Q2	Q3	Q4	Q1	Q2
HY/2009/15 - Works Programme Rev. M (DD:20-Sep-12)													
Works in East Ventilation Adit - Based on Alternative Method													
Reinstatement of Breakwater													
S3_54840	Reinstatement works -west side	7d/wk-1	60d	21-Feb-14 08 A	30-Sep-14 18	-85d							
S3_60085	Reinstatement works east side	7d/wk-1	60d	31-May-14 08 A	30-Sep-14 18	-85d							
S3_54845	Completion of Section 3 (KD8) in EVA Area (Alternative Method)	7d/wk-2	0d		30-Sep-14 18	-86d							
Works in TS1/TS2 - OHVD and Cable Trough/Maintenance Walkway													
TS2 - OHVD and Cable Trough/Maintenance Walkway													
OHVD Slab and Cable Trough Construction													
S3_6210	TS2 - OHVD/ Cable trough	7d/wk-1	40d	20-May-14 08 A	30-Sep-14 18	-85d							
S3_6212	Completion of Section 3 - TS1/TS2 Area (below -6mpd) KD8)	7d/wk-2	0d		30-Sep-14 18	-86d							
Works in TS4/ME4 Area (Portion 14A, 14B, 15, 23)													
TS4/ME4 - Removal of Temporary Reclamation													
Remaining Works at TZ6													
Stage 4 - Seawall and Reclamation at TZ6													
A-2010	Installation of seawall blocks (Qty: 245 nos.)	7d/wk-2	6d	15-Sep-14 08 A	26-Sep-14 18	-332d							
A-2020	Soil Backfilling up to -2.45mPD (Qty:3,000 cu.m.)	7d/wk-2	2d	25-Sep-14 08	26-Sep-14 18	-332d							
A-2030	Utilities installation for Mined Tunnel	7d/wk-2	1d	27-Sep-14 08	27-Sep-14 18	-332d							
A-2040	Soil backfilling up to ground level (Qty:2,000 cu.m.)	7d/wk-2	2d	28-Sep-14 08	29-Sep-14 18	-332d							
A-2050	Site clearance	7d/wk-2	1d	30-Sep-14 08	30-Sep-14 18	-305d							
A-2060	Handover to MTR	7d/wk-2	0d		30-Sep-14 18	-305d							
Removal of Temporary Reclamation at TS4/ME4													
Stage 5 (Zones A, D & F - TS4-D33 to D-26, SCL2 & ME4-D19 to D13)													
A-3000	D-Wall horizontal cutting (Qty: 62 pcs.)	7d/wk-2	21d	29-Aug-14 08 A	23-Sep-14 18	-340d							
Stage 6 (Zone C - P4, ME4-D12 to ME4-D16 & P3)													
A-3011	Marine removal of temporary reclamation and seawall blocks (Zones C)	7d/wk-2	21d	31-Aug-14 08 A	02-Oct-14 18	-353d							
A-3030	D-Wall vertical cutting (Qty: 15 pcs.)	7d/wk-2	4d	03-Oct-14 08	06-Oct-14 18	-353d							
A-3040	D-Wall horizontal cutting (Qty: 20 pcs.)	7d/wk-2	5d	06-Oct-14 08	10-Oct-14 18	-352d							

- Summary Bar
- Actual Level of Effort
- Actual Work
- Remaining Work
- Critical Remaining Work
- Milestone

1 of 18

China State Construction Engineering (Hong Kong) Ltd

Contract No. HY/2009/15 - Central Wan Chai By Pass - Tunnel (Causeway Bay Typhoon Shelter Section)

WORKS PROGRAMME REV. M

Prepared by William Caluza			
Date	Revision	Checked	Approved
26-Sep...	1st submission		



Activity ID	Activity Name	Calendar	Original Duration	Start	Finish	Total Float	2015				2016				
							Q4	Q1	Q2	Q3	Q4	Q1	Q2	Q3	
Stage 7 (Zones C & E - ME4-D06 to D01, SCL1 & TS4-D25)															
A-4000	Marine removal of temporary reclamation and seawall blocks (Zones C & E)	7d/wk-2	18d	06-Sep-14 08 A	06-Oct-14 18	-353d									
A-3090	Hole coring (Qty: 44 nos)	7d/wk-2	9d	20-Sep-14 08*	28-Sep-14 18	-346d									
A-4010	D-Wall vertical cutting (Qty: 27pcs.)	7d/wk-2	7d	07-Oct-14 08	13-Oct-14 18	-353d									
A-4020	D-Wall horizontal cutting (Qty: 37 pcs.)	7d/wk-2	10d	11-Oct-14 08	20-Oct-14 18	-353d									
Stage 9 (Zone I - TS4-D01 to TS4-D08)															
A-3050	Remaining removal of temporary reclamation (Zone I)	7d/wk-2	28d	29-Aug-14 08 A	01-Oct-14 18	-342d									
A-3060	Hole coring (Qty: 25 nos)	7d/wk-2	5d	02-Oct-14 08	06-Oct-14 18	-342d									
A-3070	D-Wall vertical cutting (Qty: 14 pcs.)	7d/wk-2	3d	07-Oct-14 08	09-Oct-14 18	-342d									
A-3080	D-Wall horizontal cutting (Qty: 24 pcs.)	7d/wk-2	5d	21-Oct-14 08	25-Oct-14 18	-353d									
Stage 8 (Zones G & K - TS4-D24 to TS4-D15)															
A-4040	Relocation of RHKYC floating pontoon	7d/wk-2	5d	22-Sep-14 08*	26-Sep-14 18	-338d									
A-4050	Hole coring (Qty: 27 nos)	7d/wk-2	6d	29-Sep-14 08	04-Oct-14 18	-346d									
A-4060	Marine removal of temporary reclamation and seawall blocks (Zone G & K)	7d/wk-2	14d	11-Oct-14 08	24-Oct-14 18	-352d									
A-4070	D-Wall vertical cutting (Qty: 18pcs.)	7d/wk-2	4d	25-Oct-14 08	28-Oct-14 18	-352d									
A-4080	D-Wall horizontal cutting (Qty: 25 pcs.)	7d/wk-2	7d	26-Oct-14 08	01-Nov-14 18	-352d									
Stage 10 (Zone J - TS4-D09 to TS4-D14)															
A-4090	Land removal of temporary reclamation (Zone J)	7d/wk-2	10d	07-Oct-14 08	16-Oct-14 18	-344d									
A-5000	Hole coring (Qty: 32 nos)	7d/wk-2	7d	17-Oct-14 08	23-Oct-14 18	-340d									
A-5010	Marine removal of temporary reclamation (Zone J)	7d/wk-2	7d	26-Oct-14 08	01-Nov-14 18	-353d									
A-5020	D-Wall vertical cutting (Qty: 20 pcs.)	7d/wk-2	5d	02-Nov-14 08	06-Nov-14 18	-353d									
A-5030	D-Wall horizontal cutting (Qty: 26 pcs.)	7d/wk-2	7d	04-Nov-14 08	10-Nov-14 18*	-353d									
Stage 13 - Phase 3 Mooring															
A-5050	Final trimming of sea bed level	7d/wk-2	4d	02-Nov-14 08	05-Nov-14 18	-347d									
A-5060	Phase 3 Mooring	7d/wk-2	6d	06-Nov-14 08	11-Nov-14 18	-347d									
A-5040	Reinstatement of existing seawall (Zones I & J)	7d/wk-2	7d	11-Nov-14 08	17-Nov-14 18	-353d									
Stage 12 - Re-provisioning of Jetty															
S6_5258	Provision of Mobile Crane (until permanent re-provision of Jetty is completed)	7d/wk-1	160d	20-Feb-14 08 A	30-Dec-14 18	-335d									
A-6010	BA8 submission and consent for commencement of superstructure	7d/wk-2	28d	20-Sep-14 08 A	16-Oct-14 18	-336d									

- Summary Bar
- Actual Level of Effort
- Actual Work
- Remaining Work
- Critical Remaining Work
- Milestone

2 of 18

China State Construction Engineering (Hong Kong) Ltd

Contract No. HY/2009/15 - Central Wan Chai By Pass - Tunnel (Causeway Bay Typhoon Shelter Section)

WORKS PROGRAMME REV. M

Prepared by William Caluza			
Date	Revision	Checked	Approved
26-Sep...	1st submission		



中國建築工程(香港)有限公司
CHINA STATE CONSTRUCTION ENGINEERING (HONG KONG) LTD.

Activity ID	Activity Name	Calendar	Original Duration	Start	Finish	Total Float	2015					2016							
							Q4	Q1	Q2	Q3	Q4	Q1	Q2	Q3					
A-6012	Submission of performance report	7d/wk-2	1d	25-Oct-14 08*	25-Oct-14 18	-286d													
A-6020	Erection of working platform for jetty beams and reinstate the floating portoon	7d/wk-2	10d	02-Nov-14 08	11-Nov-14 18	-352d													
A-6040	BA10 submission for authorized signatory and subcontractor	7d/wk-2	1d	12-Nov-14 08	12-Nov-14 18	-304d													
A-6030	Jetty beams construction	7d/wk-2	14d	12-Nov-14 08	25-Nov-14 18	-352d													
A-6052	Construction of floating pontoon	7d/wk-2	14d	26-Nov-14 08	09-Dec-14 18	-331d													
A-6050	BA13 submission + 14-day cube test results	7d/wk-2	28d	26-Nov-14 08	23-Dec-14 18	-352d													
A-6060	E&M and accessories installation	7d/wk-2	7d	24-Dec-14 08	30-Dec-14 18	-352d													
A-6070	Handover to RHKYC	7d/wk-2	1d	31-Dec-14 08	31-Dec-14 18	-352d													
Stage 11 - Construction of TZ4																			
A-6080	South side - laying rockfill and levelling stone (Qty: 1,550 cu.m)	7d/wk-2	12d	24-Sep-14 08	05-Oct-14 18	-339d													
A-6090	South side - install seawall blocks (Qty: 255 nos.)	7d/wk-2	6d	06-Oct-14 08	11-Oct-14 18	-339d													
A-7000	South side - general fill (Qty: 2,000 cu.m.)	7d/wk-2	2d	12-Oct-14 08	13-Oct-14 18	-339d													
A-7010	North side - laying rockfill and levelling stone (Qty: 1,550 cu.m)	7d/wk-2	12d	21-Oct-14 08	01-Nov-14 18	-346d													
A-7020	North side - install seawall blocks (Qty: 255 nos.)	7d/wk-2	6d	02-Nov-14 08	07-Nov-14 18	-346d													
A-7030	North side - general fill (Qty:2,000 cu.m.)	7d/wk-2	2d	08-Nov-14 08	09-Nov-14 18	-346d													
A-7040	Handover to contract TS3/SR8	7d/wk-2	1d	10-Nov-14 08	10-Nov-14 18*	-346d													
TS4/ME4, Removal of Temporary Reclamation																			
S26875	Completion of Section 2 (With ME4 option) (KD7)	7d/wk-2	0d		17-Nov-14 18	-353d													
S26890	Completion of Section 7B (ME4) (KD13)	7d/wk-2	0d		17-Nov-14 18	-353d													
TS4 - OHVD / Cable Trough																			
S5_6185	TS4 (incl. TS4+) - OHVD Slab - Area C (access through temp. opening at TZ4)	7d/wk-1	36d	02-Jan-15 08*	06-Feb-15 18	195d													
S5_6190	TS4 (incl. TS4+) - Cable Trough (access through temp. opening at TZ4)	7d/wk-1	60d	07-Feb-15 08*	14-Apr-15 18	195d													
S5_59850	Completion of Section 5 - TS4/ME4 Area (KD10), below -20mPD	7d/wk-2	0d		02-Nov-15 18*	0d													
Works in TPCWAE Area (Portion 20A, 20B)																			
Removal of Temporary Reclamation																			
Removal of Temporary Reclamation & Form TZ5																			
S87670	Remove general fill /sea wall block	7d/wk-1	24d	20-May-14 08A	08-Oct-14 18	-296d													
S87675	Diaphragm wall saw cutting (1st D Wall cut on 23 Jun 2014)	7d/wk-1	31d	03-Sep-14 08A	16-Oct-14 18	-306d													
S87755	Form TZ5	7d/wk-1	18d	25-Sep-14 08	14-Oct-14 18	-304d													

-  Summary Bar
-  Actual Level of Effort
-  Actual Work
-  Remaining Work
-  Critical Remaining Work
-  Milestone

3 of 18

China State Construction Engineering (Hong Kong) Ltd
 Contract No. HY/2009/15 - Central Wan Chai By Pass - Tunnel (Causeway Bay Typhoon Shelter Section)
WORKS PROGRAMME REV. M

Prepared by William Caluza			
Date	Revision	Checked	Approved
26-Sep...	1st submission		



Activity ID	Activity Name	Calendar	Original Duration	Start	Finish	Total Float	2015				2016								
							Q4	Q1	Q2	Q3	Q4	Q1	Q2	Q3					
S67885	Achievement of KD5	7d/wk-2	0d		16-Oct-14 18	-323d													
S67887	Complete Reinstatement of Vertical Seawall (near PRE Office)	7d/wk-2	0d		27-Oct-14 18	-322d													
Reinstate Mucking Out Access Shaft "C"																			
S67240	Start reinstatement works (after completion of TPCWAW OHVD works)	6d/wk	0d	28-Mar-16 08		-102d													
S67225	Cast slab opening at top of CCT West bound (access shaft)	6d/wk	18d	28-Mar-16 08	16-Apr-16 18	-102d													
S67230	Removal of vertical shaft and backfilling	6d/wk	48d	11-Apr-16 08	04-Jun-16 18	-102d													
S67235	Reinstatement of pavement	6d/wk	12d	30-May-16 08	11-Jun-16 18	-102d													
TPCWAE - OHVD / Cable Trough																			
S5_7405	TPCWAE - Cable Trough (access through temp. opening at TZ5 & Portion 19)	6d/wk	48d	04-Sep-15 08	02-Nov-15 18	0d													
S5_7400	TPCWAE - OHVD Slab AT Area A (access through temp. opening at TZ5 & Portion 19)	6d/wk	48d	04-Sep-15 08	02-Nov-15 18	0d													
S5_59840	Completion of Section 5 - TPCWAE Area (KD10), below -20mPD	7d/wk-2	0d		02-Nov-15 18*	0d													
Works in TPCWAW Area																			
TPCWAW - Temporary Reclamation																			
Temporary Reclamation -																			
S6_9440	TPCWAW - place levelling stone and tamping, South side	7d/wk-1	6d	15-Oct-14 08	20-Oct-14 18	-122d													
S6_9450	TPCWAW - place seawall block to +4 at South side (Qty: 569 nos. @ 50 nos/day)	7d/wk-1	12d	21-Oct-14 08	01-Nov-14 18	-122d													
S6_9465	TPCWAW - place levelling stone and tamping, North side	7d/wk-1	6d	02-Nov-14 08	07-Nov-14 18	-122d													
S6_9470	TPCWAW - place seawall blocks to +4 North side (Qty:672 nos @ 50 nos/day)	7d/wk-1	14d	08-Nov-14 08	21-Nov-14 18	-122d													
S6_9495	TPCWAW - General fill to +2 within the seawall	7d/wk-1	17d	15-Nov-14 08	01-Dec-14 18	-122d													
S6_9490	TPCWAW - place seawall blocks to +4 at the temporary opening	7d/wk-1	7d	02-Dec-14 08	08-Dec-14 18	-122d													
S6_9475	TPCWAW - Remaining General fill to +4 within the seawall	7d/wk-1	10d	09-Dec-14 08	18-Dec-14 18	-122d													
TPCWAW - Diaphragm Wall																			
Diaphragm Wall																			
S6_9385	Site investigation	7d/wk-1	49d	01-Dec-14 08	21-Jan-15 18	-113d													
S6_8960	Install guide wall	7d/wk-1	40d	17-Dec-14 08	28-Jan-15 18	-120d													
S6_8955	Curtain grout along proposed diaphragm wall	7d/wk-1	40d	19-Dec-14 08	30-Jan-15 18	-122d													
S6_9382	Set up bentonite silo/plants and equipments	7d/wk-1	30d	19-Dec-14 08	20-Jan-15 18	-112d													
S6_9345	Diaphragm wall construction (34 panels @ 3 panels/ week)	7d/wk-1	68d	30-Jan-15 08	14-Apr-15 18	-141d													
S6_9350	Install shear pins on diaphragm wall	7d/wk-1	40d	14-Mar-15 08	26-Apr-15 18	-133d													

- Summary Bar
- Actual Level of Effort
- Actual Work
- Remaining Work
- Critical Remaining Work
- Milestone

4 of 18

China State Construction Engineering (Hong Kong) Ltd

Contract No. HY/2009/15 - Central Wan Chai By Pass - Tunnel (Causeway Bay Typhoon Shelter Section)

WORKS PROGRAMME REV. M

Prepared by William Caluza

Date	Revision	Checked	Approved
26-Sep...	1st submission		



中國建築工程(香港)有限公司
CHINA STATE CONSTRUCTION ENGINEERING (HONG KONG) LTD.

Activity ID	Activity Name	Calendar	Original Duration	Start	Finish	Total Float	2015				2016				
							Q4	Q1	Q2	Q3	Q4	Q1	Q2	Q3	
S6_9355	Install king posts	7d/wk-1	40d	14-Mar-15 08	26-Apr-15 18	-133d			■						
S6_8970	Diaphragm Wall Pile test	7d/wk-1	40d	20-Mar-15 08	03-May-15 18	-129d			■						
S6_9375	Carry out contact/fissure grouting	7d/wk-1	29d	21-Mar-15 08	22-Apr-15 18	-141d			■						
TPCWAW- ELS Works															
ELS Works															
S6_9360	Install dewatering wells and piezometers	7d/wk-1	20d	30-Mar-15 08	22-Apr-15 18	-141d			■						
S6_9365	Install inclinometers inside D-wall	7d/wk-1	20d	15-Apr-15 08	05-May-15 18	-141d			■						
S6_8975	Carry out pumping tests	7d/wk-1	12d	23-Apr-15 08	05-May-15 18	-141d			■						
S6_8980	1st Layer - D Wall conc over break if any & Soft Excavation	7d/wk-1	10d	06-May-15 08	15-May-15 18	-141d			■						
S6_9260	Submit pumping test report	7d/wk-1	1d	06-May-15 08	06-May-15 18	-137d									
S6_8985	1st Layer - install lateral support	7d/wk-1	10d	16-May-15 08	26-May-15 18	-141d			■						
S6_8990	Install vibrating wire strain gauge	7d/wk-1	10d	16-May-15 08	26-May-15 18	-141d			■						
S6_8995	2nd Layer - D Wall conc over break if any & Soft Excavation	7d/wk-1	10d	18-May-15 08	28-May-15 18	-141d			■						
S6_9000	2nd Layer - install lateral support	7d/wk-1	10d	29-May-15 08	07-Jun-15 18	-141d			■						
S6_9005	3rd Layer - D Wall conc over break if any & Soft Excavation	7d/wk-1	10d	31-May-15 08	09-Jun-15 18	-141d			■						
S6_9010	3rd Layer - install lateral support	7d/wk-1	10d	10-Jun-15 08	19-Jun-15 18	-141d			■						
S6_9015	4th Layer - D Wall conc over break if any & Soft Excavation	7d/wk-1	10d	12-Jun-15 08	22-Jun-15 18	-141d			■						
S6_9020	4th Layer - install lateral support	7d/wk-1	10d	23-Jun-15 08	03-Jul-15 18	-141d			■						
S6_9025	5th Layer - D Wall conc over break if any & Soft Excavation	7d/wk-1	10d	25-Jun-15 08	05-Jul-15 18	-141d			■						
S6_9030	5th Layer - install lateral support	7d/wk-1	10d	27-Jun-15 08	07-Jul-15 18	-141d			■						
S6_9035	6th Layer - D Wall conc over break if any & Soft Excavation	7d/wk-1	10d	08-Jul-15 08	17-Jul-15 18	-141d			■						
S6_9040	6th Layer - install lateral support	7d/wk-1	10d	18-Jul-15 08	27-Jul-15 18	-69d			■						
TPCWAW - ROCK EXCAVATION															
S6_6180	Rock excavation to formation	7d/wk-1	112d	18-Jul-15 08	09-Nov-15 18	-141d			■						
S6_9370	Install tie back anchor to D- Walls (area on west side, near Portion 11)	7d/wk-1	25d	20-Jul-15 08	13-Aug-15 18	-69d			■						
S6_9415	Install tie back anchor to D- Walls (east area)	7d/wk-1	20d	20-Jul-15 08	08-Aug-15 18	-69d			■						
S6_9055	Provide Access to WDII Contractor for demolition of bulkhead at Portion 11	7d/wk-2	0d		10-Nov-15 18	-133d			◆						
TPCWAW- CCT RC Structure															
TPCWAW - CCT / OHVD															

- Summary Bar
- Actual Level of Effort
- Actual Work
- Remaining Work
- Critical Remaining Work
- ◆ Milestone

5 of 18

China State Construction Engineering (Hong Kong) Ltd

Contract No. HY/2009/15 - Central Wan Chai By Pass - Tunnel (Causeway Bay Typhoon Shelter Section)

WORKS PROGRAMME REV. M

Prepared by William Caluza

Date	Revision	Checked	Approved
26-Sep...	1st submission		



中國建築工程(香港)有限公司
CHINA STATE CONSTRUCTION ENGINEERING HONG KONG LTD.

Activity ID	Activity Name	Calendar	Original Duration	Start	Finish	Total Float	2015				2016				
							Q4	Q1	Q2	Q3	Q4	Q1	Q2	Q3	
S6_9070	TPCWAW Construct tunnel base slab	7d/wk-1	50d	23-Oct-15 08	11-Dec-15 18	-141d					■	TPCWAW Construct tunnel base slab			
S6_9075	TPCWAW Construct tunnel wall + OHVD + roof slab	7d/wk-1	80d	13-Nov-15 08	02-Feb-16 18	-141d					■	TPCWAW Construct tunnel wall + OHVD +			
S6_9077	TPCWAW - external waterproofing on top of completed CCT box (incl. screeding)	7d/wk-1	26d	03-Feb-16 08	28-Feb-16 18	-120d					■	TPCWAW - external waterproofing or			
S6_9076	TPCWAW King post load transfer	7d/wk-1	26d	03-Feb-16 08	28-Feb-16 18	-120d					■	TPCWAW King post load transfer			
TPCWAW - Removal of Temporary Reclamation															
Removal of Temporary Reclamation															
S6_9140	Backfilling/Removal of ELS/ Reinstatement of sea wall at Portion 11 (concurrent activities)	7d/wk-1	30d	17-Feb-16 08	17-Mar-16 18	-120d					■	Backfilling/Removal of ELS/ Reinsta			
S6_9105	Remove general fill/ seawall block (concurrent activities)	7d/wk-1	25d	06-Mar-16 08	30-Mar-16 18	-120d					■	Remove general fill/ seawall block			
S6_9120	Saw cut diaphragm wall	7d/wk-1	63d	21-Mar-16 08	23-May-16 18	-120d					■	Saw cut diaphragm w			
S6_7550	Completion of Section 6- (KD11), above -20mPD	7d/wk-2	0d		23-May-16 18	-121d					◆	Completion of Section			
TPCWAW -Cable Trough/ Maintenance Walkway															
S6_9085	TPCWAW - Cable Trough (access through temp. opening at Portion 19)	7d/wk-2	24d	02-Mar-16 08	25-Mar-16 18	-144d					■	TPCWAW - Cable Trough (access			
S6_9135	Completion of Section 5 - TPCWAW Area (KD10), below -20mPD	7d/wk-2	0d		25-Mar-16 18	-144d					◆	Completion of Section 5 - TPCWA			
Works in Wan Chai PCWA (Portion 11)															
Initial Works & Utilities Works															
S4_2810	Installation of Hoarding	7d/wk-1	24d	05-May-14 08 A	17-Oct-14 18	-58d	■	Installation of Hoarding							
S4_2720	Remove existing rock mound	7d/wk-1	24d	21-Oct-14 08	13-Nov-14 18	-61d	■	Remove existing rock mound							
S4_2750	Carry out Site Investigation for BW1/BW2	7d/wk-1	12d	21-Oct-14 08	01-Nov-14 18	-61d	■	Carry out Site Investigation for BW1/BW2							
S4_2755	BW1/BW2 Engineers confirmation of provisional Barrettes	7d/wk-1	0d		07-Nov-14 18	-61d	◆	BW1/BW2 Engineers confirmation of provisional Barrettes							
Allow Access to WDII															
S4_2785	Complete Section 4 - Portion 11 (KD9)	7d/wk-2	0d		10-Nov-15 18	-132d							◆	Complete Section 4 - Portion 11 (KD9)	
S4_2775	Return Portion 11 to WDII	7d/wk-1	0d		10-Nov-15 18	-129d							◆	Return Portion 11 to WDII	
Works for Mined Tunnel (Portion 16, 17, 18)															
SR8 (Tunnel Excavation + Lining)															
From West (TPCWAE)															
Heading Excavation (2d/m, 24h/day work shift, 7d/week, no work on statutory holiday)															
A8676	SR8 Heading Excavation From West, CH 4095- 4107 = 8m @2d/m	7d/wk-1a	16d	03-Sep-14 08 A	28-Sep-14 18	164d	■	SR8 Heading Excavation From West, CH 4095- 4107 = 8m @2d/m							
Bench Excavation (1.5d-2d/m, 20m separation with heading)															
A8700	SR8 Bench Excavation From West, CH 4055- 4065 = 10m	7d/wk-1a	20d	08-Sep-14 08 A	24-Sep-14 18	148d	■	SR8 Bench Excavation From West, CH 4055- 4065 = 10m							

- Summary Bar
- Actual Level of Effort
- Actual Work
- Remaining Work
- Critical Remaining Work
- ◆ Milestone


China State Construction Engineering (Hong Kong) Ltd

Contract No. HY/2009/15 - Central Wan Chai By Pass - Tunnel (Causeway Bay Typhoon Shelter Section)

WORKS PROGRAMME REV. M

Prepared by William Caluza

Date	Revision	Checked	Approved
26-Sep...	1st submission		



中國建築工程(香港)有限公司
CHINA STATE CONSTRUCTION ENGINEERING (HONG KONG) LTD.

Activity ID	Activity Name	Calendar	Original Duration	Start	Finish	Total Float	2015				2016				
							Q4	Q1	Q2	Q3	Q4	Q1	Q2	Q3	
A8705	SR8 Bench Excavation From West, CH 4065- 4075 = 10m	7d/wk-1a	20d	25-Sep-14 08	15-Oct-14 18	148d									
A8685	SR8 Bench Excavation From West, CH 4075- 4085 = 10m	7d/wk-1a	20d	16-Oct-14 08	04-Nov-14 18	148d									
A8680	SR8 Bench Excavation From West, CH 4085- 4095 = 10m	7d/wk-1a	20d	05-Nov-14 08	24-Nov-14 18	148d									
A8725	SR8 Bench Excavation From West, CH 4095- 4100 = 5m	7d/wk-1a	10d	25-Nov-14 08	04-Dec-14 18	148d									
From East (TS4)															
Heading Excavation (2d/m, 24h/day work shift, 7d/week, no work on statutory holiday)															
A8495	SR8 Heading Excavation From East CH 4115- 4107 = 8m @2d/m	7d/wk-1a	16d	15-Sep-14 08 A	28-Sep-14 18	10d									
Bench Excavation (1.5d/m, 20m separation with heading)															
A8455	SR8 Bench Excavation From East, CH 4147.5- 4135 = 12.5m	7d/wk-1a	19d	20-Sep-14 08	09-Oct-14 18	0d									
A8470	SR8 Bench Excavation From East, CH 4135- 4125 = 10m	7d/wk-1a	15d	10-Oct-14 08	24-Oct-14 18	0d									
A8460	SR8 Bench Excavation From East, CH 4125- 4115 = 10m	7d/wk-1a	15d	25-Oct-14 08	08-Nov-14 18	0d									
A8465	SR8 Bench Excavation From East, CH 4115- 4100 = 15m	7d/wk-1a	23d	09-Nov-14 08	01-Dec-14 18	0d									
Tunnel Lining Works															
From West - Base Slab (10m/bay, 10m separation with benching excavation)															
A8525	SR8, From West, CH 4015 - 4025 = 10m/bay, base slab	7d/wk-1a	10d	15-Sep-14 08 A	04-Oct-14 18	137d									
A8530	SR8, From West, CH 4025 - 4035 = 10m/bay, base slab	7d/wk-1a	10d	05-Oct-14 08	14-Oct-14 18	163d									
A8535	SR8, From West, CH 4035 - 4045 = 10m/bay, base slab	7d/wk-1a	8d	15-Oct-14 08	22-Oct-14 18	165d									
A8540	SR8, From West, CH 4045 - 4055 = 10m/bay, base slab	7d/wk-1a	8d	23-Oct-14 08	30-Oct-14 18	165d									
A8545	SR8, From West, CH 4055 - 4065 = 10m/bay, base slab	7d/wk-1a	8d	05-Nov-14 08	12-Nov-14 18	160d									
A8550	SR8, From West, CH 4065 - 4075 = 10m/bay, base slab	7d/wk-1a	8d	25-Nov-14 08	02-Dec-14 18	148d									
A8555	SR8, From West, CH 4075 - 4085 = 10m/bay, base slab	7d/wk-1a	8d	05-Dec-14 08	12-Dec-14 18	148d									
A8560	SR8, From West, CH 4085 - 4095 = 10m/bay, base slab	7d/wk-1a	8d	13-Dec-14 08	20-Dec-14 18	150d									
A8561	SR8, From West, CH 4095 - 4105 = 10m/bay, base slab	7d/wk-1a	8d	21-Dec-14 08	29-Dec-14 18	152d									
A8562	SR8, From West, CH 4105 - 4115 = 10m/bay, base slab	7d/wk-1a	8d	30-Dec-14 08	07-Jan-15 18	154d									
From West - Lining (5m/bay, 10m separation with base slab)															
A8575	SR8, From West, CH 3995 - 4000 = 1bay, lining	7d/wk-1a	9d	20-Sep-14 08	28-Sep-14 18	0d									
A8580	SR8, From West, CH 4000 - 4005 = 1bay, lining	7d/wk-1a	9d	05-Oct-14 08	13-Oct-14 18	137d									
A8585	SR8, From West, CH 4005 - 4010 = 1bay, lining	7d/wk-1a	9d	14-Oct-14 08	22-Oct-14 18	137d									
A8590	SR8, From West, CH 4010 - 4015 = 1bay, lining	7d/wk-1a	9d	23-Oct-14 08	31-Oct-14 18	137d									

- Summary Bar
- Actual Level of Effort
- Actual Work
- Remaining Work
- Critical Remaining Work
- ◆ Milestone

China State Construction Engineering (Hong Kong) Ltd
 Contract No. HY/2009/15 - Central Wan Chai By Pass - Tunnel (Causeway Bay Typhoon Shelter Section)
WORKS PROGRAMME REV. M

Prepared by William Caluza			
Date	Revision	Checked	Approved
26-Sep...	1st submission		



Activity ID	Activity Name	Calendar	Original Duration	Start	Finish	Total Float	2015				2016						
							Q4	Q1	Q2	Q3	Q4	Q1	Q2	Q3			
A8595	SR8, From West, CH 4015 - 4020 = 1bay, lining	7d/wk-1a	9d	01-Nov-14 08	09-Nov-14 18	137d											
A8600	SR8, From West, CH 4020 - 4025 = 1bay, lining	7d/wk-1a	9d	10-Nov-14 08	18-Nov-14 18	137d											
A8605	SR8, From West, CH 4025 - 4030 = 1bay, lining	7d/wk-1a	5d	19-Nov-14 08	23-Nov-14 18	137d											
A8610	SR8, From West, CH 4030 - 4035 = 1bay, lining	7d/wk-1a	5d	24-Nov-14 08	28-Nov-14 18	137d											
A8615	SR8, From West, CH 4035 - 4040 = 1bay, lining	7d/wk-1a	5d	29-Nov-14 08	03-Dec-14 18	137d											
A8620	SR8, From West, CH 4040 - 4045 = 1bay, lining	7d/wk-1a	5d	04-Dec-14 08	08-Dec-14 18	137d											
A8625	SR8, From West, CH 4045 - 4050 = 1bay, lining	7d/wk-1a	5d	09-Dec-14 08	13-Dec-14 18	137d											
A8630	SR8, From West, CH 4050 - 4055 = 1bay, lining	7d/wk-1a	5d	14-Dec-14 08	18-Dec-14 18	137d											
A8635	SR8, From West, CH 4055 - 4060 = 1bay, lining	7d/wk-1a	5d	19-Dec-14 08	23-Dec-14 18	137d											
A8640	SR8, From West, CH 4060 - 4065 = 1bay, lining	7d/wk-1a	5d	24-Dec-14 08	29-Dec-14 18	137d											
A8645	SR8, From West, CH 4065 - 4070 = 1bay, lining	7d/wk-1a	5d	30-Dec-14 08	04-Jan-15 18	137d											
A8647	SR8, From West, CH 4070 - 4075 = 1bay, lining	7d/wk-1a	5d	05-Jan-15 08	09-Jan-15 18	137d											
A8648	SR8, From West, CH 4075 - 4080 = 1bay, lining	7d/wk-1a	5d	10-Jan-15 08	14-Jan-15 18	137d											
A8649	SR8, From West, CH 4080 - 4085 = 1bay, lining	7d/wk-1a	5d	15-Jan-15 08	19-Jan-15 18	137d											
A8651	SR8, From West, CH 4085 - 4090 = 1bay, lining	7d/wk-1a	5d	20-Jan-15 08	24-Jan-15 18	137d											
A8652	SR8, From West, CH 4090 - 4095 = 1bay, lining	7d/wk-1a	5d	25-Jan-15 08	29-Jan-15 18	137d											
A8653	SR8, From West, CH 4095 - 4100 = 1bay, lining	7d/wk-1a	5d	30-Jan-15 08	03-Feb-15 18	137d											
A8654	SR8, From West, CH 4100 - 4105 = 1bay, lining	7d/wk-1a	5d	04-Feb-15 08	08-Feb-15 18	137d											
From East - Base Slab (10m/bay, 10m separation with benching excavation)																	
A9775	SR8 From East, CH 4149.5 - 4145 = 4.5m, base slab	7d/wk-1a	8d	02-Dec-14 08	09-Dec-14 18	0d											
A9780	SR8 From East, CH 4145 - 4135 = 10m/bay, base slab	7d/wk-1a	8d	10-Dec-14 08	17-Dec-14 18	0d											
A9785	SR8 From East, CH 4135 - 4125 = 10m/bay, base slab	7d/wk-1a	8d	18-Dec-14 08	26-Dec-14 18	8d											
A9786	SR8 From East, CH 4125 - 4115 = 10m/bay, base slab	7d/wk-1a	8d	27-Dec-14 08	04-Jan-15 18	10d											
From East - Lining (5m/bay, 10m separation with base slab)																	
A9820	From East, SR8 CH 4149.5 - 4145 = 4.5m, 1 bay, lining	7d/wk-1a	5d	18-Dec-14 08	22-Dec-14 18	0d											
A9815	From East, SR8 CH 4145 - 4140 = 1bay, lining	7d/wk-1a	5d	23-Dec-14 08	28-Dec-14 18	6d											
A9810	From East, SR8 CH 4140 - 4135 = 1bay, lining	7d/wk-1a	5d	29-Dec-14 08	03-Jan-15 18	6d											
A9805	From East, SR8 CH 4135 - 4130 = 1bay, lining	7d/wk-1a	5d	04-Jan-15 08	08-Jan-15 18	6d											

- Summary Bar
- Actual Level of Effort
- Actual Work
- Remaining Work
- Critical Remaining Work
- ◆ Milestone

8 of 18

China State Construction Engineering (Hong Kong) Ltd

Contract No. HY/2009/15 - Central Wan Chai By Pass - Tunnel (Causeway Bay Typhoon Shelter Section)

WORKS PROGRAMME REV. M

Prepared by William Caluza

Date	Revision	Checked	Approved
26-Sep...	1st submission		



中國建築工程(香港)有限公司
CHINA STATE CONSTRUCTION ENGINEERING HONG KONG LTD.

Activity ID	Activity Name	Calendar	Original Duration	Start	Finish	Total Float	2015				2016		
							Q4	Q1	Q2	Q3	Q4	Q1	Q2
A9870	From East, SR8 CH 4130 - 4125 = 1bay, lining	7d/wk-1a	5d	09-Jan-15 08	13-Jan-15 18	6d		■	From East, SR8 CH 4130 - 4125 = 1bay, lining				
A9800	From East, SR8 CH 4125 - 4120 = 1bay, lining	7d/wk-1a	5d	14-Jan-15 08	18-Jan-15 18	143d		■	From East, SR8 CH 4125 - 4120 = 1bay, lining				
A9860	From East, SR8 CH 4120 - 4115 = 1bay, lining	7d/wk-1a	5d	19-Jan-15 08	23-Jan-15 18	143d		■	From East, SR8 CH 4120 - 4115 = 1bay, lining				
A9855	From East, SR8 CH 4115 - 4110 = 1bay, lining	7d/wk-1a	5d	24-Jan-15 08	28-Jan-15 18	143d		■	From East, SR8 CH 4115 - 4110 = 1bay, lining				
A9850	From East, SR8 CH 4110 - 4105 = 1bay, lining	7d/wk-1a	5d	29-Jan-15 08	02-Feb-15 18	143d		■	From East, SR8 CH 4110 - 4105 = 1bay, lining				
OHVD(10m/bay) / Utility Trough													
A8570	SR8 Tunnel OHVD and utility trough =, 167= 17 bays @ 10m/bay @ 7d/bay	7d/wk-1a	120d	09-Feb-15 08	13-Jun-15 18	137d		■	SR8 Tunnel OHVD and utility trough =, 167= 17 bays @ 10m/bay @ 7d/bay				
EB Outer Tunnel Excavation													
From West (TPCWAE)													
Outer Bench Excavation (1.5d - 2d/m, 20m separation with heading)													
A9550	EB, Outer Bench From West, CH 4035- 4045 = 10m	7d/wk-1a	30d	07-Aug-14 08 A	20-Oct-14 18	135d	■	EB, Outer Bench From West, CH 4035- 4045 = 10m					
A9555	EB, Outer Bench From West, CH 4045- 4055 = 10m (2d/m)	7d/wk-1a	20d	20-Oct-14 08	08-Nov-14 18	135d	■	EB, Outer Bench From West, CH 4045- 4055 = 10m (2d/m)					
A9560	EB, Outer Bench From West, CH 4055- 4065 = 10m (2d/m)	7d/wk-1a	20d	09-Nov-14 08	28-Nov-14 18	135d	■	EB, Outer Bench From West, CH 4055- 4065 = 10m (2d/m)					
A9565	EB, Outer Bench From West, CH 4065- 4075 = 10m (2d/m)	7d/wk-1a	20d	29-Nov-14 08	18-Dec-14 18	135d	■	EB, Outer Bench From West, CH 4065- 4075 = 10m (2d/m)					
A9520	EB, Outer Bench From West, CH 4075- 4085 = 10m (2d/m)	7d/wk-1a	20d	19-Dec-14 08	09-Jan-15 18	135d	■	EB, Outer Bench From West, CH 4075- 4085 = 10m (2d/m)					
A9545	EB, Outer Bench From West, CH 4085- 4095 = 10m 1.5d/m)	7d/wk-1a	15d	10-Jan-15 08	24-Jan-15 18	135d	■	EB, Outer Bench From West, CH 4085- 4095 = 10m 1.5d/m)					
From East (TS4)													
Outer Bench Excavation (1.5d-2d/m, 20m separation with heading)													
A9605	EB, Outer Bench From East, CH 4147.5 - 4145 = 2.5m	7d/wk-1a	30d	20-Oct-14 08*	18-Nov-14 18	120d	■	EB, Outer Bench From East, CH 4147.5 - 4145 = 2.5m					
A9610	EB, Outer Bench From East, CH 4145- 4135 = 10m (2d/m)	7d/wk-1a	20d	19-Nov-14 08	08-Dec-14 18	120d	■	EB, Outer Bench From East, CH 4145- 4135 = 10m (2d/m)					
A9615	EB, Outer Bench From East, CH 4135- 4125 = 10m (2d/m)	7d/wk-1a	20d	09-Dec-14 08	29-Dec-14 18	120d	■	EB, Outer Bench From East, CH 4135- 4125 = 10m (2d/m)					
A9620	EB, Outer Bench From East, CH 4125- 4115 = 10m (2d/m)	7d/wk-1a	20d	30-Dec-14 08	19-Jan-15 18	120d	■	EB, Outer Bench From East, CH 4125- 4115 = 10m (2d/m)					
A9625	EB, Outer Bench From East, CH 4115- 4105 = 10m (2d/m)	7d/wk-1a	20d	20-Jan-15 08	08-Feb-15 18	120d	■	EB, Outer Bench From East, CH 4115- 4105 = 10m (2d/m)					
A9630	EB, Outer Bench From East, CH 4105- 4095 = 10m (1.5d/m)	7d/wk-1a	15d	09-Feb-15 08	26-Feb-15 18	120d	■	EB, Outer Bench From East, CH 4105- 4095 = 10m (1.5d/m)					
EB (Inner Tunnel Excavation + Lining)													
From West (TPCWAE)													
Inner Heading Excavation (2d/m, 24h/day work shift, 7d/week, no work on statutory holiday)													
A8805	EB, Inner Heading From West, CH 3992- 4005 = 13m @3d/m	7d/wk-1a	39d	29-Sep-14 08	07-Nov-14 18	0d	■	EB, Inner Heading From West, CH 3992- 4005 = 13m @3d/m					
A8815	EB, Inner Heading From West, CH 4005- 4015 = 10m @2d/m	7d/wk-1a	20d	08-Nov-14 08	27-Nov-14 18	0d	■	EB, Inner Heading From West, CH 4005- 4015 = 10m @2d/m					

- Summary Bar
- Actual Level of Effort
- Actual Work
- Remaining Work
- Critical Remaining Work
- ◆ Milestone

9 of 18

China State Construction Engineering (Hong Kong) Ltd

Contract No. HY/2009/15 - Central Wan Chai By Pass - Tunnel (Causeway Bay Typhoon Shelter Section)

WORKS PROGRAMME REV. M

Prepared by William Caluza

Date	Revision	Checked	Approved
26-Sep...	1st submission		



中國建築工程(香港)有限公司
CHINA STATE CONSTRUCTION ENGINEERING (HONG KONG) LTD.

Activity ID	Activity Name	Calendar	Original Duration	Start	Finish	Total Float	2015				2016				
							Q4	Q1	Q2	Q3	Q4	Q1	Q2	Q3	
A8820	EB,Inner Heading From West , CH 4015- 4025 = 10m @2d/m	7d/wk-1a	20d	28-Nov-14 08	17-Dec-14 18	0d		■	■						
A8780	EB,Inner Heading From West, CH 4025- 4035 = 10m @2d/m	7d/wk-1a	20d	18-Dec-14 08	08-Jan-15 18	0d		■	■						
A8810	EB,Inner Heading From West , CH 4035- 4045 = 10m @2d/m	7d/wk-1a	20d	09-Jan-15 08	28-Jan-15 18	0d		■	■						
A8785	EB,Inner Heading From West , CH 4045- 4055 = 10m @2d/m	7d/wk-1a	20d	29-Jan-15 08	17-Feb-15 18	0d		■	■						
A8790	EB,Inner Heading From West, CH 4055- 4065 = 10m @ 2d/m	7d/wk-1a	20d	18-Feb-15 08	12-Mar-15 18	0d		■	■						
A8795	EB,Inner Heading From West , CH 4065- 4075 = 10m, @ 2d/m	7d/wk-1a	20d	13-Mar-15 08	01-Apr-15 18	0d		■	■						
A8800	EB,Inner Heading From West, CH 4075- 4085 = 10m @ 2d/m	7d/wk-1a	20d	02-Apr-15 08	22-Apr-15 18	0d		■	■						
A8825	EB,Inner Heading From West, CH 4085- 4095 = 10m @ 2d/m	7d/wk-1a	20d	23-Apr-15 08	13-May-15 18	0d		■	■						
Inner Bench Excavation (1.5-2d/m, 20m separation with heading)															
A8765	EB, Inner Bench From West, CH 3992-4005 = 13m (2d/m)	7d/wk-1a	26d	08-Nov-14 08	03-Dec-14 18	23d		■							
A8770	EB, Inner Bench From West,CH 4005- 4015 = 10m	7d/wk-1a	15d	18-Dec-14 08	03-Jan-15 18	9d		■							
A8775	EB, Inner Bench From West,CH 4015- 4025 = 10m	7d/wk-1a	15d	09-Jan-15 08	23-Jan-15 18	4d		■							
A8735	EB, Inner Bench From West,CH 4025- 4035 = 10m	7d/wk-1a	15d	29-Jan-15 08	12-Feb-15 18	14d		■							
A8740	EB, Inner Bench From West,CH 4035- 4045 = 10m	7d/wk-1a	15d	18-Feb-15 08	07-Mar-15 18	11d		■							
A8745	EB, Inner Bench From West,CH 4045- 4055 = 10m	7d/wk-1a	15d	13-Mar-15 08	27-Mar-15 18	6d		■							
A8750	EB, Inner Bench From West,CH 4055- 4065 = 10m	7d/wk-1a	15d	02-Apr-15 08	17-Apr-15 18	1d		■							
A8755	EB, Inner Bench From West,CH 4065- 4075 = 10m	7d/wk-1a	15d	18-Apr-15 08	03-May-15 18	1d		■							
A8760	EB, Inner Bench From West,CH 4075- 4085 = 10m	7d/wk-1a	15d	05-May-15 08	19-May-15 18	0d		■							
A8761	EB, Inner Bench From West,CH 4085- 4095 = 10m	7d/wk-1a	15d	20-May-15 08	03-Jun-15 18	0d		■							
From East (TS4)															
Inner Heading Excavation (3d/m, 24h/day work shift, 7d/week, no work on statutory holiday)															
A8835	EB,Inner Heading From East, CH 4147.5 to 4145 = 2.5m, @ 3d/m	7d/wk-1a	8d	06-Jan-15 08	13-Jan-15 18	0d		■							
A8850	EB,Inner Heading From East, CH 4145- 4135 = 10m, @ 3d/m	7d/wk-1a	30d	14-Jan-15 08	12-Feb-15 18	0d		■							
A8830	EB,Inner Heading From East, CH 4135- 4125 = 10m @2d/m	7d/wk-1a	20d	13-Feb-15 08	07-Mar-15 18	0d		■							
A8840	EB,Inner Heading From East, CH 4125- 4115 = 10m @2d/m	7d/wk-1a	20d	08-Mar-15 08	27-Mar-15 18	0d		■							
A9910	EB,Inner Heading From East, CH 4115- 4105 = 10m @2d/m	7d/wk-1a	20d	28-Mar-15 08	17-Apr-15 18	0d		■							
A8845	EB,Inner Heading From East, CH 4105- 4095 = 10m @2d/m	7d/wk-1a	20d	18-Apr-15 08	08-May-15 18	0d		■							
Inner Bench Excavation (1.5d-2d/m, 20m separation with heading)															
A8860	EB,Inner Bench From East, CH 4147.5 - 4145 = 2.5m	7d/wk-1a	4d	08-Mar-15 08	11-Mar-15 18	11d		■							

- Summary Bar
- Actual Level of Effort
- Actual Work
- Remaining Work
- Critical Remaining Work
- ◆ Milestone

10 of 18

China State Construction Engineering (Hong Kong) Ltd

Contract No. HY/2009/15 - Central Wan Chai By Pass - Tunnel (Causeway Bay Typhoon Shelter Section)

WORKS PROGRAMME REV. M

Prepared by William Caluza			
Date	Revision	Checked	Approved
26-Sep...	1st submission		

中國建築工程(香港)有限公司
 CHINA STATE CONSTRUCTION ENGINEERING (HONG KONG) LTD.

Activity ID	Activity Name	Calendar	Original Duration	Start	Finish	Total Float	2015				2016			
							Q4	Q1	Q2	Q3	Q4	Q1	Q2	Q3
A8865	EB, Inner Bench From East, CH 4145- 4135 = 10m	7d/wk-1a	15d	12-Mar-15 08	26-Mar-15 18	11d			■ EB, Inner Bench From East, CH 4145- 4135 = 10m					
A8870	EB, Inner Bench From East, CH 4135- 4125 = 10m	7d/wk-1a	15d	28-Mar-15 08	12-Apr-15 18	10d			■ EB, Inner Bench From East, CH 4135- 4125 = 10m					
A8855	EB, Inner Bench From East, CH 4125- 4115 = 10m	7d/wk-1a	15d	18-Apr-15 08	03-May-15 18	5d			■ EB, Inner Bench From East, CH 4125- 4115 = 10m					
A8875	EB, Inner Bench From East, CH 4115- 4105 = 10m	7d/wk-1a	15d	09-May-15 08	23-May-15 18	0d			■ EB, Inner Bench From East, CH 4115- 4105 = 10m					
A9915	EB, Inner Bench From East, CH 4105- 4095 = 10m	7d/wk-1a	15d	24-May-15 08	08-Jun-15 18	0d			■ EB, Inner Bench From East, CH 4105- 4095 = 10m					
Tunnel Lining Works														
From West Base Slab (10m/bay, 10m separation with benching excavation)														
A8900	EB From West, Base Slab CH 3990 - 3995 = 1 bay	7d/wk-1a	10d	04-Dec-14 08	13-Dec-14 18	33d			■ EB From West, Base Slab CH 3990 - 3995 = 1 bay					
A8890	EB From West, Base Slab CH 3995 - 4005 = 10m/bay	7d/wk-1a	10d	04-Jan-15 08	13-Jan-15 18	14d			■ EB From West, Base Slab CH 3995 - 4005 = 10m/bay					
A8905	EB From West, Base Slab CH 4005 - 4015 = 10m/bay	7d/wk-1a	10d	24-Jan-15 08	02-Feb-15 18	4d			■ EB From West, Base Slab CH 4005 - 4015 = 10m/bay					
A8910	EB From West, Base Slab CH 4015 - 4025 = 10m/bay	7d/wk-1a	10d	13-Feb-15 08	25-Feb-15 18	14d			■ EB From West, Base Slab CH 4015 - 4025 = 10m/bay					
A8915	EB From West, Base Slab CH 4025 - 4035 = 10m/bay	7d/wk-1a	10d	08-Mar-15 08	17-Mar-15 18	12d			■ EB From West, Base Slab CH 4025 - 4035 = 10m/bay					
A8920	EB From West, Base Slab CH 4035 - 4045 = 10m/bay	7d/wk-1a	10d	28-Mar-15 08	07-Apr-15 18	8d			■ EB From West, Base Slab CH 4035 - 4045 = 10m/bay					
A8925	EB From West, Base Slab CH 4045 - 4055 = 10m/bay	7d/wk-1a	10d	18-Apr-15 08	27-Apr-15 18	4d			■ EB From West, Base Slab CH 4045 - 4055 = 10m/bay					
A8930	EB From West, Base Slab CH 4055 - 4065 = 10m/bay	7d/wk-1a	10d	04-May-15 08	13-May-15 18	5d			■ EB From West, Base Slab CH 4055 - 4065 = 10m/bay					
A8880	EB From West, Base Slab CH 4065 - 4075 = 10m/bay	7d/wk-1a	10d	20-May-15 08	29-May-15 18	5d			■ EB From West, Base Slab CH 4065 - 4075 = 10m/bay					
A8885	EB From West, Base Slab CH 4075 - 4085 = 10m/bay	7d/wk-1a	10d	04-Jun-15 08	13-Jun-15 18	0d			■ EB From West, Base Slab CH 4075 - 4085 = 10m/bay					
A8895	EB From West, Base Slab CH 4085 - 4095 = 10m/bay	7d/wk-1a	10d	14-Jun-15 08	24-Jun-15 18	0d			■ EB From West, Base Slab CH 4085 - 4095 = 10m/bay					
From East Base Slab (10m/bay, 10m separation with benching excavation)														
A9905	EB From East, Base Slab CH 4149.5 - 4145 = 4.5m	7d/wk-1a	10d	13-Apr-15 08	22-Apr-15 18	26d			■ EB From East, Base Slab CH 4149.5 - 4145 = 4.5m					
A9900	EB From East, Base Slab CH 4145 - 4135 = 10m/bay	7d/wk-1a	10d	04-May-15 08	13-May-15 18	16d			■ EB From East, Base Slab CH 4145 - 4135 = 10m/bay					
A9895	EB From East, Base Slab CH 4135 - 4125 = 10m/bay	7d/wk-1a	10d	24-May-15 08	02-Jun-15 18	6d			■ EB From East, Base Slab CH 4135 - 4125 = 10m/bay					
A9890	EB From East, Base Slab CH 4125 - 4115 = 10m/bay	7d/wk-1a	10d	09-Jun-15 08	18-Jun-15 18	0d			■ EB From East, Base Slab CH 4125 - 4115 = 10m/bay					
A9885	EB From East, Base Slab CH 4115 - 4105 = 10m/bay	7d/wk-1a	10d	19-Jun-15 08	29-Jun-15 18	0d			■ EB From East, Base Slab CH 4115 - 4105 = 10m/bay					
A9880	EB From East, Base Slab CH 4105 - 4095 = 10m/bay	7d/wk-1a	10d	30-Jun-15 08	10-Jul-15 18	0d			■ EB From East, Base Slab CH 4105 - 4095 = 10m/bay					
Lining (5m/bay, 15m separation with base slab)														
A9065	EB From West, Lining CH 3990 - 3995 = 1bay	7d/wk-1a	10d	03-Feb-15 08	12-Feb-15 18	4d			■ EB From West, Lining CH 3990 - 3995 = 1bay					
A9005	EB From West, Lining CH 3995 - 4000 = 1bay	7d/wk-1a	10d	13-Feb-15 08	25-Feb-15 18	4d			■ EB From West, Lining CH 3995 - 4000 = 1bay					
A9090	EB From West, Lining CH 4000 - 4005 = 1bay	7d/wk-1a	10d	26-Feb-15 08	07-Mar-15 18	4d			■ EB From West, Lining CH 4000 - 4005 = 1bay					

- Summary Bar
- Actual Level of Effort
- Actual Work
- Remaining Work
- Critical Remaining Work
- Milestone

11 of 18

China State Construction Engineering (Hong Kong) Ltd

Contract No. HY/2009/15 - Central Wan Chai By Pass - Tunnel (Causeway Bay Typhoon Shelter Section)

WORKS PROGRAMME REV. M

Prepared by William Caluza

Date	Revision	Checked	Approved
26-Sep...	1st submission		



中國建築工程(香港)有限公司
CHINA STATE CONSTRUCTION ENGINEERING (HONG KONG) LTD.

Activity ID	Activity Name	Calendar	Original Duration	Start	Finish	Total Float	2015				2016		
							Q4	Q1	Q2	Q3	Q4	Q1	Q2
A9050	EB From West, Lining CH 4005 - 4010 = 1bay	7d/wk-1a	10d	08-Mar-15 08	17-Mar-15 18	4d			■ EB From West, Lining CH 4005 - 4010 = 1bay				
A9055	EB From West, Lining CH 4010 - 4015 = 1bay	7d/wk-1a	10d	18-Mar-15 08	27-Mar-15 18	4d			■ EB From West, Lining CH 4010 - 4015 = 1bay				
A9080	EB From West, Lining CH 4015 - 4020 = 1bay	7d/wk-1a	10d	26-Mar-15 08	05-Apr-15 18	4d			■ EB From West, Lining CH 4015 - 4020 = 1bay				
A9070	EB From West, Lining CH 4020 - 4025 = 1bay	7d/wk-1a	10d	03-Apr-15 08	13-Apr-15 18	4d			■ EB From West, Lining CH 4020 - 4025 = 1bay				
A9075	EB From West, Lining CH 4025 - 4030 = 1bay	7d/wk-1a	10d	12-Apr-15 08	21-Apr-15 18	4d			■ EB From West, Lining CH 4025 - 4030 = 1bay				
A9080	EB From West, Lining CH 4030 - 4035 = 1bay	7d/wk-1a	10d	20-Apr-15 08	29-Apr-15 18	4d			■ EB From West, Lining CH 4030 - 4035 = 1bay				
A9085	EB From West, Lining CH 4035 - 4040 = 1bay	7d/wk-1a	10d	28-Apr-15 08	08-May-15 18	4d			■ EB From West, Lining CH 4035 - 4040 = 1bay				
A9015	EB From West, Lining CH 4040 - 4045 = 1bay	7d/wk-1a	10d	07-May-15 08	16-May-15 18	4d			■ EB From West, Lining CH 4040 - 4045 = 1bay				
A9020	EB From West, Lining CH 4045 - 4050 = 1bay	7d/wk-1a	10d	15-May-15 08	24-May-15 18	4d			■ EB From West, Lining CH 4045 - 4050 = 1bay				
A9025	EB From West, Lining CH 4050 - 4055 = 1bay	7d/wk-1a	10d	23-May-15 08	01-Jun-15 18	4d			■ EB From West, Lining CH 4050 - 4055 = 1bay				
A9030	EB From West, Lining CH 4055 - 4060 = 1bay	7d/wk-1a	10d	31-May-15 08	09-Jun-15 18	4d			■ EB From West, Lining CH 4055 - 4060 = 1bay				
A9035	EB From West, Lining CH 4060 - 4065 = 1bay	7d/wk-1a	10d	07-Jun-15 08	16-Jun-15 18	4d			■ EB From West, Lining CH 4060 - 4065 = 1bay				
A9040	EB From West, Lining CH 4065 - 4070 = 1bay	7d/wk-1a	10d	14-Jun-15 08	24-Jun-15 18	4d			■ EB From West, Lining CH 4065 - 4070 = 1bay				
A9045	EB From West, Lining CH 4070 - 4075 = 1bay	7d/wk-1a	10d	25-Jun-15 08	05-Jul-15 18	0d			■ EB From West, Lining CH 4070 - 4075 = 1bay				
A8955	EB From West, Lining CH 4075 - 4080 = 1bay	7d/wk-1a	10d	30-Jun-15 08	10-Jul-15 18	0d			■ EB From West, Lining CH 4075 - 4080 = 1bay				
A8960	EB From West, Lining CH 4080 - 4085 = 1bay	7d/wk-1a	5d	11-Jul-15 08	15-Jul-15 18	0d			■ EB From West, Lining CH 4080 - 4085 = 1bay				
A8970	EB From West, Lining CH 4085 - 4090 = 1bay	7d/wk-1a	5d	16-Jul-15 08	20-Jul-15 18	0d			■ EB From West, Lining CH 4085 - 4090 = 1bay				
A8975	EB From West, Lining CH 4090 - 4095 = 1bay	7d/wk-1a	5d	21-Jul-15 08	25-Jul-15 18	0d			■ EB From West, Lining CH 4090 - 4095 = 1bay				
A8980	EB From West, Lining CH 4095 - 4100 = 1bay	7d/wk-1a	5d	26-Jul-15 08	30-Jul-15 18	0d			■ EB From West, Lining CH 4095 - 4100 = 1bay				
A8985	EB From West, Lining CH 4100 - 4105 = 1bay	7d/wk-1a	5d	31-Jul-15 08	04-Aug-15 18	0d			■ EB From West, Lining CH 4100 - 4105 = 1bay				
A8990	EB From West, Lining CH 4105 - 4110 = 1bay	7d/wk-1a	5d	05-Aug-15 08	09-Aug-15 18	0d			■ EB From West, Lining CH 4105 - 4110 = 1bay				
A8995	EB From West, Lining CH 4110 - 4115 = 1bay	7d/wk-1a	5d	10-Aug-15 08	14-Aug-15 18	0d			■ EB From West, Lining CH 4110 - 4115 = 1bay				
A9000	EB From West, Lining CH 4115 - 4120 = 1bay	7d/wk-1a	5d	15-Aug-15 08	19-Aug-15 18	0d			■ EB From West, Lining CH 4115 - 4120 = 1bay				
A9010	EB From West, Lining CH 4120 - 4125 = 1bay	7d/wk-1a	5d	20-Aug-15 08	24-Aug-15 18	0d			■ EB From West, Lining CH 4120 - 4125 = 1bay				
A8965	EB From West, Lining CH 4125 - 4130 = 1bay	7d/wk-1a	5d	25-Aug-15 08	29-Aug-15 18	0d			■ EB From West, Lining CH 4125 - 4130 = 1bay				
A8935	EB From West, Lining CH 4130 - 4135 = 1bay	7d/wk-1a	5d	30-Aug-15 08	03-Sep-15 18	0d			■ EB From West, Lining CH 4130 - 4135 = 1bay				
A8940	EB From West, Lining CH 4135 - 4140 = 1bay	7d/wk-1a	5d	04-Sep-15 08	08-Sep-15 18	0d			■ EB From West, Lining CH 4135 - 4140 = 1bay				
A8945	EB From West, Lining CH 4140 - 4145 = 1bay	7d/wk-1a	5d	09-Sep-15 08	13-Sep-15 18	0d			■ EB From West, Lining CH 4140 - 4145 = 1bay				
A8950	EB From West, Lining CH 4145 - 4149.5 = 4.5m	7d/wk-1a	5d	14-Sep-15 08	18-Sep-15 18	0d			■ EB From West, Lining CH 4145 - 4149.5 = 4.5m				

- Summary Bar
- Actual Level of Effort
- Actual Work
- Remaining Work
- Critical Remaining Work
- ◆ Milestone

12 of 18

China State Construction Engineering (Hong Kong) Ltd

Contract No. HY/2009/15 - Central Wan Chai By Pass - Tunnel (Causeway Bay Typhoon Shelter Section)

WORKS PROGRAMME REV. M

Prepared by William Caluza

Date	Revision	Checked	Approved
26-Sep-...	1st submission		



中國建築工程(香港)有限公司
CHINA STATE CONSTRUCTION ENGINEERING (HONG KONG) LTD.

Activity ID	Activity Name	Calendar	Original Duration	Start	Finish	Total Float	2015				2016					
							Q4	Q1	Q2	Q3	Q4	Q1	Q2	Q3		
OHVD(10m/bay) / Utility Trough																
A9095	EB From West OHVD and utility trough =, 167= 17 bays @ 10m/bay @ 7d/bay	7d/wk-1a	120d	03-Jul-15 08	02-Nov-15 18	0d										
WB Outer Tunnel Excavation																
From West (TPCWAE)																
Outer Heading Excavation (2d/m, 24h/day work shift, 7d/week, no work on statutory holiday)																
A9651	WB, Outer Heading From West, CH 4085- 4092.5 = 7.5m @ 2d/m	7d/wk-1a	15d	13-Sep-14 08 A	30-Sep-14 18	163d										
Outer Bench Excavation (1.5d-2d/m, 20m separation with heading)																
A9680	WB, Outer Bench From West, CH 4025- 4035 = 10m	7d/wk-1a	15d	12-Oct-14 08	26-Oct-14 18	163d										
A9665	WB, Outer Bench From West, CH 4035- 4045 = 10m	7d/wk-1a	15d	27-Oct-14 08	10-Nov-14 18	163d										
A9670	WB, Outer Bench From West, CH 4045- 4055 = 10m	7d/wk-1a	15d	11-Nov-14 08	25-Nov-14 18	163d										
A9675	WB, Outer Bench From West, CH 4055- 4065 = 10m	7d/wk-1a	15d	26-Nov-14 08	10-Dec-14 18	163d										
A9700	WB, Outer Bench From West, CH 4065- 4075 = 10m	7d/wk-1a	15d	11-Dec-14 08	26-Dec-14 18	163d										
A9701	WB, Outer Bench From West, CH 4075- 4082.5 = 7.5m	7d/wk-1a	15d	27-Dec-14 08	11-Jan-15 18	163d										
From East (TS4)																
Outer Heading Excavation (2d/m, 24h/day work shift, 7d/week, no work on statutory holiday)																
A9730	WB, Outer Heading From East, CH 4105- 4092.5 = 12.5m @2d/m	7d/wk-1a	25d	30-Aug-14 08 A	30-Sep-14 18	168d										
Outer Bench Excavation (1.5d-2d/m, 20m separation with heading)																
A9740	WB, Outer Bench From East, CH 4136- 4135 = 1m	7d/wk-1a	2d	12-Oct-14 08	13-Oct-14 18	168d										
A9770	WB, Outer Bench From East, CH 4135- 4125 = 10m	7d/wk-1a	15d	14-Oct-14 08	28-Oct-14 18	168d										
A9745	WB, Outer Bench From East, CH 4125- 4115 = 10m	7d/wk-1a	15d	28-Oct-14 08	11-Nov-14 18	168d										
A9750	WB, Outer Bench From East, CH 4115- 4105 = 10m	7d/wk-1a	15d	11-Nov-14 08	25-Nov-14 18	168d										
A9755	WB, Outer Bench From East, CH 4105- 4095 = 10m	7d/wk-1a	15d	26-Nov-14 08	10-Dec-14 18	168d										
A9760	WB, Outer Bench From East, CH 4095- 4082.5 = 12.5m	7d/wk-1a	25d	11-Dec-14 08	06-Jan-15 18	168d										
WB (Inner Tunnel Excavation + Lining)																
From West (TPCWAE)																
Inner Heading Excavation (2-3d/m, 24h/day work shift, 7d/week, no work on statutory holiday)																
A9130	WB, Inner Heading From West, CH 3993- 4005 = 12m @3d/m	7d/wk-1a	50d	29-Sep-14 08	18-Nov-14 18	0d										
A9135	WB, Inner Heading From West, CH 4005- 4015 = 10m @2d/m	7d/wk-1a	20d	19-Nov-14 08	08-Dec-14 18	0d										
A9140	WB, Inner Heading From West, CH 4015- 4025 = 10m @2d/m	7d/wk-1a	20d	09-Dec-14 08	29-Dec-14 18	0d										

- Summary Bar
- Actual Level of Effort
- Actual Work
- Remaining Work
- Critical Remaining Work
- Milestone

13 of 18

China State Construction Engineering (Hong Kong) Ltd

Contract No. HY/2009/15 - Central Wan Chai By Pass - Tunnel (Causeway Bay Typhoon Shelter Section)

WORKS PROGRAMME REV. M

Prepared by William Caluza			
Date	Revision	Checked	Approved
26-Sep...	1st submission		



Activity ID	Activity Name	Calendar	Original Duration	Start	Finish	Total Float	2015				2016			
							Q4	Q1	Q2	Q3	Q4	Q1	Q2	Q3
A9100	WB,Inner Heading From West, CH 4025- 4035 = 10m @2d/m	7d/wk-1a	20d	30-Dec-14 08	19-Jan-15 18	0d		■	WB,Inner Heading From West, CH 4025- 4035 = 10m @2d/m					
A9105	WB,Inner Heading From West, CH 4035- 4045 = 10m @2d/m	7d/wk-1a	20d	20-Jan-15 08	08-Feb-15 18	0d		■	WB,Inner Heading From West, CH 4035- 4045 = 10m @2d/m					
A9110	WB,Inner Heading From West, CH 4045- 4055 = 10m @2d/m	7d/wk-1a	20d	09-Feb-15 08	03-Mar-15 18	0d		■	WB,Inner Heading From West, CH 4045- 4055 = 10m @2d/m					
A9115	WB,Inner Heading From West, CH 4055- 4065 = 10m @ 2d/m	7d/wk-1a	20d	04-Mar-15 08	23-Mar-15 18	0d		■	WB,Inner Heading From West, CH 4055- 4065 = 10m @ 2d/m					
A9120	WB,Inner Heading From West, CH 4065- 4075 = 10m, @ 2d/m	7d/wk-1a	20d	24-Mar-15 08	13-Apr-15 18	0d		■	WB,Inner Heading From West, CH 4065- 4075 = 10m, @ 2d/m					
A9125	WB,Inner Heading From West, CH 4075- 4085 = 10m @ 2d/m	7d/wk-1a	20d	14-Apr-15 08	04-May-15 18	0d		■	WB,Inner Heading From West, CH 4075- 4085 = 10m @ 2d/m					
Inner Bench Excavation (1.5d-2d/m, 20m separation with heading)														
A9180	WB,Inner Bench From West, CH 3993- 4005 = 12m	7d/wk-1a	18d	30-Dec-14 08	17-Jan-15 18	27d		■	WB,Inner Bench From West, CH 3993- 4005 = 12m					
A9205	WB,Inner Bench From West, CH 4005- 4015 = 10m	7d/wk-1a	15d	20-Jan-15 08	03-Feb-15 18	25d		■	WB,Inner Bench From West, CH 4005- 4015 = 10m					
A9190	WB,Inner Bench From West, CH 4015- 4025 = 10m	7d/wk-1a	15d	09-Feb-15 08	26-Feb-15 18	20d		■	WB,Inner Bench From West, CH 4015- 4025 = 10m					
A9185	WB,Inner Bench From West, CH 4025- 4035 = 10m	7d/wk-1a	15d	04-Mar-15 08	18-Mar-15 18	15d		■	WB,Inner Bench From West, CH 4025- 4035 = 10m					
A9155	WB,Inner Bench From West, CH 4035- 4045 = 10m	7d/wk-1a	15d	24-Mar-15 08	08-Apr-15 18	10d		■	WB,Inner Bench From West, CH 4035- 4045 = 10m					
A9160	WB,Inner Bench From West, CH 4045- 4055 = 10m	7d/wk-1a	15d	14-Apr-15 08	28-Apr-15 18	5d		■	WB,Inner Bench From West, CH 4045- 4055 = 10m					
A9165	WB,Inner Bench From West, CH 4055- 4065 = 10m	7d/wk-1a	15d	05-May-15 08	19-May-15 18	0d		■	WB,Inner Bench From West, CH 4055- 4065 = 10m					
A9170	WB,Inner Bench From West, CH 4065- 4075 = 10m	7d/wk-1a	15d	20-May-15 08	03-Jun-15 18	0d		■	WB,Inner Bench From West, CH 4065- 4075 = 10m					
A9175	WB,Inner Bench From West, CH 4075- 4085 = 10m	7d/wk-1a	15d	04-Jun-15 08	18-Jun-15 18	0d		■	WB,Inner Bench From West, CH 4075- 4085 = 10m					
From East (TS4)														
Inner Heading Excavation (2d/m, 24h/day work shift, 7d/week, no work on statutory holiday)														
A9210	WB,Inner Heading From East, CH 4135- 4125 = 10m @2d/m	7d/wk-1a	20d	14-Jan-15 08	02-Feb-15 18	6d		■	WB,Inner Heading From East, CH 4135- 4125 = 10m @2d/m					
A9215	WB,Inner Heading From East, CH 4125- 4115 = 10m @2d/m	7d/wk-1a	20d	03-Feb-15 08	25-Feb-15 18	6d		■	WB,Inner Heading From East, CH 4125- 4115 = 10m @2d/m					
A9230	WB,Inner Heading From East, CH 4115- 4105 = 10m @2d/m	7d/wk-1a	20d	26-Feb-15 08	17-Mar-15 18	6d		■	WB,Inner Heading From East, CH 4115- 4105 = 10m @2d/m					
A9232	WB,Inner Heading From East, CH 4105- 4095 = 10m @2d/m	7d/wk-1a	20d	18-Mar-15 08	07-Apr-15 18	6d		■	WB,Inner Heading From East, CH 4105- 4095 = 10m @2d/m					
A9225	WB,Inner Heading From East, CH 4095- 4085 = 10m @2d/m	7d/wk-1a	20d	08-Apr-15 08	27-Apr-15 18	6d		■	WB,Inner Heading From East, CH 4095- 4085 = 10m @2d/m					
Inner Bench Excavation (1.5d-2d/m, 20m separation with heading)														
A9235	WB,Inner Bench From East, CH 4135- 4125 = 10m	7d/wk-1a	15d	18-Mar-15 08	01-Apr-15 18	16d		■	WB,Inner Bench From East, CH 4135- 4125 = 10m					
A9240	WB,Inner Bench From East, CH 4125- 4115 = 10m	7d/wk-1a	15d	08-Apr-15 08	22-Apr-15 18	11d		■	WB,Inner Bench From East, CH 4125- 4115 = 10m					
A9245	WB,Inner Bench From East, CH 4115- 4105 = 10m	7d/wk-1a	15d	28-Apr-15 08	13-May-15 18	6d		■	WB,Inner Bench From East, CH 4115- 4105 = 10m					
A9247	WB,Inner Bench From East, CH 4105- 4095 = 10m	7d/wk-1a	15d	14-May-15 08	28-May-15 18	6d		■	WB,Inner Bench From East, CH 4105- 4095 = 10m					
A9250	WB,Inner Bench From East, CH 4095- 4085 = 10m	7d/wk-1a	15d	29-May-15 08	12-Jun-15 18	6d		■	WB,Inner Bench From East, CH 4095- 4085 = 10m					

- Summary Bar
- Actual Level of Effort
- Actual Work
- Remaining Work
- Critical Remaining Work
- ◆ Milestone

14 of 18

China State Construction Engineering (Hong Kong) Ltd

Contract No. HY/2009/15 - Central Wan Chai By Pass - Tunnel (Causeway Bay Typhoon Shelter Section)

WORKS PROGRAMME REV. M

Prepared by William Caluza

Date	Revision	Checked	Approved
26-Sep...	1st submission		



中國建築工程(香港)有限公司
CHINA STATE CONSTRUCTION ENGINEERING (HONG KONG) LTD.

Activity ID	Activity Name	Calendar	Original Duration	Start	Finish	Total Float	2015				2016		
							Q4	Q1	Q2	Q3	Q4	Q1	Q2
Tunnel Lining Works													
From West Base Slab (10m/bay, 10m separation with benching excavation)													
A9295	WB From West, Base Slab CH 3990 - 3995 = 5m bay	7d/wk-1a	10d	18-Jan-15 08	27-Jan-15 18	37d							
A9320	WB From West, Base Slab CH 3995 - 4005 = 10m/bay	7d/wk-1a	10d	04-Feb-15 08	13-Feb-15 18	30d							
A9255	WB From West, Base Slab CH 4005 - 4015 = 10m/bay	7d/wk-1a	10d	27-Feb-15 08	08-Mar-15 18	50d							
A9280	WB From West, Base Slab CH 4015 - 4025 = 10m/bay	7d/wk-1a	10d	19-Mar-15 08	28-Mar-15 18	40d							
A9265	WB From West, Base Slab CH 4025 - 4035 = 10m/bay	7d/wk-1a	10d	09-Apr-15 08	18-Apr-15 18	30d							
A9300	WB From West, Base Slab CH 4035 - 4045 = 10m/bay	7d/wk-1a	10d	29-Apr-15 08	09-May-15 18	20d							
A9325	WB From West, Base Slab CH 4045 - 4055 = 10m/bay	7d/wk-1a	10d	20-May-15 08	29-May-15 18	10d							
A9305	WB From West, Base Slab CH 4055 - 4065 = 10m/bay	7d/wk-1a	10d	04-Jun-15 08	13-Jun-15 18	5d							
A9310	WB From West, Base Slab CH 4065 - 4075 = 10m/bay	7d/wk-1a	10d	19-Jun-15 08	29-Jun-15 18	0d							
A9315	WB From West, Base Slab CH 4075 - 4080 = 5m	7d/wk-1a	10d	30-Jun-15 08	10-Jul-15 18	0d							
From East Base Slab (10m/bay, 10m separation with benching excavation)													
A9960	WB From East, Base Slab CH 4135 - 4125 = 10m/bay	7d/wk-1a	10d	23-Apr-15 08	03-May-15 18	26d							
A9955	WB From East, Base Slab CH 4125 - 4115 = 10m/bay	7d/wk-1a	10d	14-May-15 08	23-May-15 18	16d							
A9950	WB From East, Base Slab CH 4115 - 4105 = 10m/bay	7d/wk-1a	10d	29-May-15 08	07-Jun-15 18	11d							
A9945	WB From East, Base Slab CH 4105 - 4095 = 10m/bay	7d/wk-1a	10d	13-Jun-15 08	23-Jun-15 18	6d							
A9940	WB From East, Base Slab CH 4095 - 4085 = 10m/bay	7d/wk-1a	10d	24-Jun-15 08	04-Jul-15 18	6d							
A9941	WB From East, Base Slab CH 4085 - 4080 = 5m	7d/wk-1a	10d	05-Jul-15 08	14-Jul-15 18	6d							
Lining (5m/bay, 10m separation with base slab)													
A9430	WB From West, Lining CH 3990 - 3995 = 1bay	7d/wk-1a	7d	14-Feb-15 08	23-Feb-15 18	30d							
A9470	WB From West, Lining CH 3995 - 4000 = 1bay	7d/wk-1a	7d	24-Feb-15 08	02-Mar-15 18	30d							
A9435	WB From West, Lining CH 4000 - 4005 = 1bay	7d/wk-1a	7d	03-Mar-15 08	09-Mar-15 18	30d							
A9360	WB From West, Lining CH 4005 - 4010 = 1bay	7d/wk-1a	7d	10-Mar-15 08	16-Mar-15 18	30d							
A9365	WB From West, Lining CH 4010 - 4015 = 1bay	7d/wk-1a	7d	17-Mar-15 08	23-Mar-15 18	30d							
A9370	WB From West, Lining CH 4015 - 4020 = 1bay	7d/wk-1a	7d	24-Mar-15 08	30-Mar-15 18	30d							
A9375	WB From West, Lining CH 4020 - 4025 = 1bay	7d/wk-1a	7d	31-Mar-15 08	07-Apr-15 18	30d							
A9380	WB From West, Lining CH 4025 - 4030 = 1bay	7d/wk-1a	7d	08-Apr-15 08	14-Apr-15 18	30d							
A9385	WB From West, Lining CH 4030 - 4035 = 1bay	7d/wk-1a	7d	15-Apr-15 08	21-Apr-15 18	30d							

- Summary Bar
- ▬ Actual Level of Effort
- ▬ Actual Work
- ▬ Remaining Work
- ▬ Critical Remaining Work
- ◆ Milestone

15 of 18

China State Construction Engineering (Hong Kong) Ltd

Contract No. HY/2009/15 - Central Wan Chai By Pass - Tunnel (Causeway Bay Typhoon Shelter Section)

WORKS PROGRAMME REV. M

Prepared by William Kaluza

Date	Revision	Checked	Approved
26-Sep...	1st submission		



中國建築工程(香港)有限公司
CHINA STATE CONSTRUCTION ENGINEERING (HONG KONG) LTD.

Activity ID	Activity Name	Calendar	Original Duration	Start	Finish	Total Float	2015				2016		
							Q4	Q1	Q2	Q3	Q4	Q1	Q2
A9390	WB From West, Lining CH 4035 - 4040 = 1bay	7d/wk-1a	7d	22-Apr-15 08	28-Apr-15 18	30d			■ WB From West, Lining CH 4035 - 4040 = 1bay				
A9330	WB From West, Lining CH 4040 - 4045 = 1bay	7d/wk-1a	7d	29-Apr-15 08	06-May-15 18	30d			■ WB From West, Lining CH 4040 - 4045 = 1bay				
A9335	WB From West, Lining CH 4045 - 4050 = 1bay	7d/wk-1a	7d	07-May-15 08	13-May-15 18	30d			■ WB From West, Lining CH 4045 - 4050 = 1bay				
A9340	WB From West, Lining CH 4050 - 4055 = 1bay	7d/wk-1a	7d	14-May-15 08	20-May-15 18	30d			■ WB From West, Lining CH 4050 - 4055 = 1bay				
A9345	WB From West, Lining CH 4055 - 4060 = 1bay	7d/wk-1a	7d	21-May-15 08	27-May-15 18	30d			■ WB From West, Lining CH 4055 - 4060 = 1bay				
A9350	WB From West, Lining CH 4060 - 4065 = 1bay	7d/wk-1a	7d	28-May-15 08	03-Jun-15 18	30d			■ WB From West, Lining CH 4060 - 4065 = 1bay				
A9355	WB From West, Lining CH 4065 - 4070 = 1bay	7d/wk-1a	5d	04-Jun-15 08	08-Jun-15 18	30d			■ WB From West, Lining CH 4065 - 4070 = 1bay				
A9415	WB From West, Lining CH 4070 - 4075 = 1bay	7d/wk-1a	5d	11-Jul-15 08	15-Jul-15 18	0d			■ WB From West, Lining CH 4070 - 4075 = 1bay				
A9475	WB From West, Lining CH 4075 - 4080 = 1bay	7d/wk-1a	5d	16-Jul-15 08	20-Jul-15 18	0d			■ WB From West, Lining CH 4075 - 4080 = 1bay				
A9440	WB From West, Lining CH 4080 - 4085 = 1bay	7d/wk-1a	5d	21-Jul-15 08	25-Jul-15 18	0d			■ WB From West, Lining CH 4080 - 4085 = 1bay				
A9445	WB From West, Lining CH 4085 - 4090 = 1bay	7d/wk-1a	5d	26-Jul-15 08	30-Jul-15 18	0d			■ WB From West, Lining CH 4085 - 4090 = 1bay				
A9450	WB From West, Lining CH 4090 - 4095 = 1bay	7d/wk-1a	5d	31-Jul-15 08	04-Aug-15 18	0d			■ WB From West, Lining CH 4090 - 4095 = 1bay				
A9455	WB From West, Lining CH 4095 - 4100 = 1bay	7d/wk-1a	5d	05-Aug-15 08	09-Aug-15 18	0d			■ WB From West, Lining CH 4095 - 4100 = 1bay				
A9420	WB From West, Lining CH 4100 - 4105 = 1bay	7d/wk-1a	5d	10-Aug-15 08	14-Aug-15 18	0d			■ WB From West, Lining CH 4100 - 4105 = 1bay				
A9425	WB From West, Lining CH 4105 - 4110 = 1bay	7d/wk-1a	5d	15-Aug-15 08	19-Aug-15 18	0d			■ WB From West, Lining CH 4105 - 4110 = 1bay				
A9460	WB From West, Lining CH 4110 - 4115 = 1bay	7d/wk-1a	5d	20-Aug-15 08	24-Aug-15 18	0d			■ WB From West, Lining CH 4110 - 4115 = 1bay				
A9465	WB From West, Lining CH 4115 - 4120 = 1bay	7d/wk-1a	5d	25-Aug-15 08	29-Aug-15 18	0d			■ WB From West, Lining CH 4115 - 4120 = 1bay				
A9395	WB From West, Lining CH 4120 - 4125 = 1bay	7d/wk-1a	5d	30-Aug-15 08	03-Sep-15 18	0d			■ WB From West, Lining CH 4120 - 4125 = 1bay				
A9400	WB From West, Lining CH 4125 - 4130 = 1bay	7d/wk-1a	5d	04-Sep-15 08	08-Sep-15 18	0d			■ WB From West, Lining CH 4125 - 4130 = 1bay				
A9405	WB From West, Lining CH 4130 - 4135 = 1bay	7d/wk-1a	5d	09-Sep-15 08	13-Sep-15 18	0d			■ WB From West, Lining CH 4130 - 4135 = 1bay				
A9410	WB From West, Lining CH 4135 - 4136.5 = 1bay	7d/wk-1a	5d	14-Sep-15 08	18-Sep-15 18	0d			■ WB From West, Lining CH 4135 - 4136.5 = 1bay				
OHVD(10m/bay) / Utility Trough													
A9480	WB From West OHVD and utility trough =, 153= 16 bays @ 10m/bay @ 7d/bay	7d/wk-1a	115d	08-Jul-15 08	02-Nov-15 18	0d			■ WB From West OHVD and utility trough =, 153= 16 bays @ 10				
Completion of KD10- Section 5													
A8445	KD10- Section 2: Completion of Mined Tunnel Works (orig. Target KD10- 2 Nov 2015)	7d/wk-2	0d		02-Nov-15 18*	0d							◆ KD10- Section 2: Completion of Mined Tunnel Works (orig. Tar
Interface works with other Contracts													
S5_60115	Handover TZ6 to MTR	7d/wk-2	0d		30-Sep-14 18	-249d			◆ Handover TZ6 to MTR				
S6_5283	Handover TZ4 to CWB(T2)	7d/wk-2	0d		10-Nov-14 18	-290d			◆ Handover TZ4 to CWB(T2)				
S6_5275	Provide access to CWB (CC) Contractor- TS1 & TS2	7d/wk-2	0d		21-Nov-14 18*	-85d			◆ Provide access to CWB (CC) Contractor- TS1 & TS2				

Summary Bar
 Actual Level of Effort
 Actual Work
 Remaining Work
 Critical Remaining Work
 Milestone

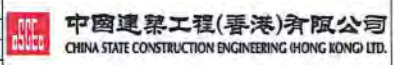
16 of 18

China State Construction Engineering (Hong Kong) Ltd

Contract No. HY/2009/15 - Central Wan Chai By Pass - Tunnel (Causeway Bay Typhoon Shelter Section)

WORKS PROGRAMME REV. M

Prepared by William Caluza			
Date	Revision	Checked	Approved
26-Sep...	1st submission		



Activity ID	Activity Name	Calendar	Original Duration	Start	Finish	Total Float	2015				2016			
							Q4	Q1	Q2	Q3	Q4	Q1	Q2	Q3
SB_5280	Provide access to CWB (CC) Contractor- TS4, TPCWA, Mined Tunnel	7d/wk-2	0d		31-Mar-16 18*	-124d								◆ Provide access to CWB (CC) C
Stage and Section Completion														
KD_5735	KD8 - Completion of Section 3, (1326d)	7d/wk-2	0d		30-Sep-14 18*	-86d	◆ KD8 - Completion of Section 3, (1326d)							
KD_5720	KD5 - Achievement of Stage 5, (1152d)	7d/wk-2	0d		16-Oct-14 18*	-323d	◆ KD5 - Achievement of Stage 5, (1152d)							
KD_5760	KD13 - Completion of Section 7B, (1152d)	7d/wk-2	0d		17-Nov-14 18*	-353d	◆ KD13 - Completion of Section 7B, (1152d)							
KD_5730	KD7 - Completion of Section 2, (1152d)	7d/wk-2	0d		17-Nov-14 18*	-297d	◆ KD7 - Completion of Section 2, (1152d)							
KD_5740	KD9 - Completion of Section 4, (1739d)	7d/wk-2	0d		10-Nov-15 18*	-132d				◆ KD9 - Completion of Section 4, (1739d)				
KD_5745	KD10 - Completion of Section 5, (1863d)	7d/wk-2	0d		25-Mar-16 18	-144d					◆ KD10 - Completion of Section 5, (
KD_5750	KD11 - Completion of Section 6, (1949d)	7d/wk-2	0d		23-May-16 18*	-121d						◆ KD11 - Completion of		
Portion Handover Date														
CD_5685	Portion Handover - Portion IV(4), KD8 +28	7d/wk-2	0d		28-Oct-14 18*	-50d	◆ Portion Handover - Portion IV(4), KD8 +28							
CD_5680	Portion Handover - Portion V (5), KD8 +28	7d/wk-2	0d		28-Oct-14 18*	-50d	◆ Portion Handover - Portion V (5), KD8 +28							
CD_5695	Portion Handover - Portion VI (6), KD8 +28	7d/wk-2	0d		28-Oct-14 18*	-50d	◆ Portion Handover - Portion VI (6), KD8 +28							
CD_5735	Portion Handover - Portion XIII (13B), KD8 +28	7d/wk-2	0d		28-Oct-14 18*	-50d	◆ Portion Handover - Portion XIII (13B), KD8 +28							
CD_5790	Portion Handover - Portion XXII (22), KD8 +28	7d/wk-2	0d		28-Oct-14 18*	-50d	◆ Portion Handover - Portion XXII (22), KD8 +28							
CD_5670	Portion Handover - Portion III (3), KD8 +28	7d/wk-2	0d		28-Oct-14 18*	-50d	◆ Portion Handover - Portion III (3), KD8 +28							
CD_5720	Portion Handover - Portion XIII (13A), KD7 +28	7d/wk-2	0d		15-Dec-14 18*	-79d	◆ Portion Handover - Portion XIII (13A), KD7 +28							
CD_5705	Portion Handover - Portion VIII (8), KD7 +28	7d/wk-2	0d		15-Dec-14 18*	-79d	◆ Portion Handover - Portion VIII (8), KD7 +28							
CD_5730	Portion Handover - Portion XIV (14A), KD7 +28	7d/wk-2	0d		15-Dec-14 18*	-79d	◆ Portion Handover - Portion XIV (14A), KD7 +28							
CD_5740	Portion Handover - Portion XV (15), KD7 +28	7d/wk-2	0d		15-Dec-14 18*	-79d	◆ Portion Handover - Portion XV (15), KD7 +28							
CD_5805	Portion Handover - Portion XXIII (23), KD7 +28	7d/wk-2	0d		15-Dec-14 18*	-79d	◆ Portion Handover - Portion XXIII (23), KD7 +28							
CD_5775	Portion Handover - Portion XVIII (18), KD10 +28	7d/wk-2	0d		30-Nov-15 18*	0d				◆ Portion Handover - Portion XVIII (18), KD10 +28				
CD_5710	Portion Handover - Portion XI (11), KD9 +28	7d/wk-2	0d		27-Dec-15 18*	0d				◆ Portion Handover - Portion XI (11), KD9 +28				
CD_5700	Portion Handover - Portion IX (9), KD10 +28	7d/wk-2	0d		22-Apr-16 18*	-52d					◆ Portion Handover - Portion			
CD_5745	Portion Handover - Portion XIV (14B), KD10 +28	7d/wk-2	0d		22-Apr-16 18*	-52d					◆ Portion Handover - Portion			
CD_5755	Portion Handover - Portion XVI (16), KD10 +28	7d/wk-2	0d		22-Apr-16 18*	-52d					◆ Portion Handover - Portion			
CD_5750	Portion Handover - Portion XVII (17), KD10 +28	7d/wk-2	0d		22-Apr-16 18*	-52d					◆ Portion Handover - Portion			
CD_5760	Portion Handover - Portion XIX (19), KD10 +28	7d/wk-2	0d		22-Apr-16 18*	-52d					◆ Portion Handover - Portion			
CD_5780	Portion Handover - Portion XX (20B), KD10 +28	7d/wk-2	0d		22-Apr-16 18*	-52d					◆ Portion Handover - Portion			

- █ Summary Bar
- ▬ Actual Level of Effort
- █ Actual Work
- █ Remaining Work
- █ Critical Remaining Work
- ◆ Milestone

17 of 18

China State Construction Engineering (Hong Kong) Ltd

Contract No. HY/2009/15 - Central Wan Chai By Pass - Tunnel (Causeway Bay Typhoon Shelter Section)

WORKS PROGRAMME REV. M

Prepared by William Caluza

Date	Revision	Checked	Approved
26-Sep...	1st submission		



中國建築工程(香港)有限公司
CHINA STATE CONSTRUCTION ENGINEERING (HONG KONG) LTD.

Activity ID	Activity Name	Calendar	Original Duration	Start	Finish	Total Float	2015				2016			
							Q4	Q1	Q2	Q3	Q4	Q1	Q2	Q3
CD_5690	Portion Handover - Portion VII (7), KD11 +28	7d/wk-2	0d		20-Jun-16 18	0d								◆ Portion Handov
CD_5725	Portion Handover - Portion XII (12), KD11 +28	7d/wk-2	0d		20-Jun-16 18	0d								◆ Portion Handov
CD_5715	Portion Handover - Portion X (10), KD11 +28	7d/wk-2	0d		20-Jun-16 18	0d								◆ Portion Handov
CD_5785	Portion Handover - Portion XXA (20A), KD11 +28	7d/wk-2	0d		20-Jun-16 18	0d								◆ Portion Handov
CD_5795	Portion Handover - Portion XXI (21), KD11 +28	7d/wk-2	0d		20-Jun-16 18	0d								◆ Portion Handov

- Summary Bar
- Actual Level of Effort
- Actual Work
- Remaining Work
- Critical Remaining Work
- ◆ ◆ Milestone

18 of 18

China State Construction Engineering (Hong Kong) Ltd

Contract No. HY/2009/15 - Central Wan Chai By Pass - Tunnel (Causeway Bay Typhoon Shelter Section)

WORKS PROGRAMME REV. M

Prepared by William Caluza			
Date	Revision	Checked	Approved
26-Sep...	1st submission		



中國建築工程(香港)有限公司
CHINA STATE CONSTRUCTION ENGINEERING (HONG KONG) LTD.

Activity ID	Activity Name	Remaining Dur	Early Start	Early Finish	Schedule																											
					June 2015	July 2015	August 2015	September 2015	October 2015	November 2015	December 2015	January 2016	February 2016	March 2016	April 2016	May 2016	June 2016	July 2016	August 2016	September 2016												
HK/2012/08 Revised Works Programme Rev.4_1(Final)																																
Dredging and Reclamation																																
Marine Work Construction																																
Zone CRIII																																
Dredging - Zone CRIII																																
CRIII - Temporary Pipe Pile Wave Wall (1st Stage)																																
MAR12360	CRIII - temp pipe pile wall (34-197) - install 610 dia. pipe pile [Remaining 28 nos. @750c/c]	42	18-Oct-14 A	18-Aug-15	[Gantt bar: 18-Oct-14 to 18-Aug-15]																											
CRIII - Temporary Pipe Pile Wave Wall (2nd Stage)																																
MAR10035	CRIII - temp pipe pile wall (1-33) - relocate interim landing steps	0		06-Jul-15*	[Gantt bar: 06-Jul-15 to 06-Jul-15]																											
MAR10040	CRIII - temp pipe pile wall (1-33) - install 610 dia. pipe pile [33nos. @750c/c]	40	07-Jul-15	21-Aug-15	[Gantt bar: 07-Jul-15 to 21-Aug-15]																											
Dredging at Zone CRIII																																
2nd Stage of Work (Types 1B(4) & 2D)																																
MAR16095	Zone CRIII - 2nd stage - Remove existing rock armour [B5-E5] after relocating interim landing steps	10	30-Aug-15	08-Sep-15	[Gantt bar: 30-Aug-15 to 08-Sep-15]																											
Zone A2																																
Seawall Construction - Zone A2																																
MAR10775	Zone A2 - seawall - Type 4, 13 - lay toe block and leveling stone in line with backfilling in zone A2(2)	18	30-Jun-15	17-Jul-15	[Gantt bar: 30-Jun-15 to 17-Jul-15]																											
MAR10780	Zone A2 - seawall - install block seawall Type 4 to -1.5mPD	14	18-Jul-15	31-Jul-15	[Gantt bar: 18-Jul-15 to 31-Jul-15]																											
MAR10800	Zone A2 - seawall - install block seawall Type 13 to -1.5mPD	14	18-Jul-15	31-Jul-15	[Gantt bar: 18-Jul-15 to 31-Jul-15]																											
MAR10805	Zone A2 - seawall - install block seawall Type 4 from -1.5 to +4.0mPD	10	01-Aug-15	12-Aug-15	[Gantt bar: 01-Aug-15 to 12-Aug-15]																											
MAR10807	Zone A2 - seawall - install block seawall Type 13 from -1.5 to +4.0mPD	10	01-Aug-15	12-Aug-15	[Gantt bar: 01-Aug-15 to 12-Aug-15]																											
MAR10815	Zone A2 - seawall - place type A behind seawall Type 4 and Type 13 up to -1.5 mPD	7	13-Aug-15	20-Aug-15	[Gantt bar: 13-Aug-15 to 20-Aug-15]																											
MAR10817	Zone A2 - seawall - lay geotextile and filter behind seawall Type 4 and Type 13 up to -1.5 mPD	7	21-Aug-15	28-Aug-15	[Gantt bar: 21-Aug-15 to 28-Aug-15]																											
Filling - Zone A2																																
MAR20365	Zone A2(2) - Public Fill -4.0 to +4.0mPD (behind Type 4 & 13 for temp channel outlet)	28	01-Aug-15	28-Aug-15	[Gantt bar: 01-Aug-15 to 28-Aug-15]																											
Zone C																																
Dredging - Zone C																																
MAR11520	Zone C - Cut existing pipe pile (2 nos.)	30	28-Jul-15	31-Aug-15	[Gantt bar: 28-Jul-15 to 31-Aug-15]																											
Zone D																																
Seawall Construction - Zone D																																
Seawall 2C-L																																
MAR12264	Zone D - Pipe Pile & demolish existing seawall	35	01-Feb-15 A	10-Aug-15	[Gantt bar: 01-Feb-15 to 10-Aug-15]																											
MAR12265	Zone D - complete fabrication of Caisson Seawall 2C-L and ready for delivery	0		30-Jul-15*	[Gantt bar: 30-Jul-15 to 30-Jul-15]																											
MAR12270	Zone D - fill rock mound for Seawall 2C-L	6	11-Aug-15	16-Aug-15	[Gantt bar: 11-Aug-15 to 16-Aug-15]																											
MAR12275	Zone D - lay toe block and level stone for Seawall 2C-L	8	17-Aug-15	25-Aug-15	[Gantt bar: 17-Aug-15 to 25-Aug-15]																											
MAR12280	Zone D - Install Caisson Seawall 2C-L	3	26-Aug-15	28-Aug-15	[Gantt bar: 26-Aug-15 to 28-Aug-15]																											

Data Date: 30-Jun-15

- ◆ Current Milestone
- ▼ Current Milestone
- Actual Work
- Critical Remaining Work
- Remaining Work
- Remaining Level of Effort

Works Programme for Non-CRIII Zones (June to August 2015)

Date	Revision	Checked	Approved
03-Jul-15			



Activity ID	Activity Name	Remaining Dur	Early Start	Early Finish	June 2015		July 2015			August 2015			September 2015			October 2015			November 2015			December 2015			January 2016			February 2016			March 2016			April 2016			May 2016			June 2016			July 2016			August 2016			September 2016																			
					01	08	15	22	29	06	13	20	27	03	10	17	24	31	07	14	21	28	05	12	19	26	02	09	16	23	30	07	14	21	28	04	11	18	25	01	08	15	22	29	07	14	21	28	04	11	18	25	02	09	16	23	30	06	13	20	27	04	11	18	25	01	08	15
CWB D - Slip Road 1 - Dwall Construction & Piling																																																																				
SIIA12260	Sec II A - CWB SR1: ground pre-treatment	27	17-Jan-15 A	31-Jul-15																																																																
SIIA12280	Sec II A - CWB SR1: Guide Wall	30	10-Feb-15 A	08-Aug-15																																																																
SIIA12305	Sec II A - CWB SR1: construct Permanent DWall (1.2m thk)	58	07-Apr-15 A	05-Sep-15																																																																
SIIA12310	Sec II A - CWB SR1: construct pre-bored H-pile	42	19-Aug-15	08-Oct-15																																																																
SIIA12320	Sec II A - CWB SR1: Temp. Cut-off Wall at Both Ends	45	15-Aug-15	08-Oct-15																																																																
SIIA12340	Sec II A - CWB SR1: Ground treatment to Stop End (MTR CWL)	32	29-Aug-15	07-Oct-15																																																																
CWB D - Slip Road 1 - Pumping Test Preparation/ Pumping Test																																																																				
SIIA12360	Sec II A - CWB SR1: Grout curtain / contact grout for Dwall	38	17-Aug-15	30-Sep-15																																																																
SIIA12380	Sec II A - CWB SR1: Dwall sonic test / interface core	38	17-Aug-15	30-Sep-15																																																																
SIIA12400	Sec II A - CWB SR1: Install dewatering/ recharging/ observation wells	38	24-Aug-15	08-Oct-15																																																																
Section III - Road D11 & Part of Road P2, Area 4, Implement 1st Stage ITA																																																																				
Roadwork & Utilities																																																																				
General																																																																				
SIII10040	Sec III - roadwork & utilities - storm water drain & subsoil drain	121	01-May-15 A	21-Nov-15																																																																
SIII10060	Sec III - roadwork & utilities - Watermain & Irrigation Mains	100	07-Jul-15*	03-Nov-15																																																																
SIII10080	Sec III - roadwork & utilities - gas main and valve chamber	100	17-Jul-15	13-Nov-15																																																																
SIII10100	Sec III - roadwork & utilities - HEC cable duct and catchpit	100	27-Jul-15	23-Nov-15																																																																
SIII10120	Sec III - roadwork & utilities - sub-base	100	06-Aug-15	03-Dec-15																																																																
SIII10140	Sec III - roadwork & utilities - Road kerb	100	15-Aug-15	12-Dec-15																																																																
SIII10160	Sec III - roadwork & utilities - flexible pavement	100	26-Aug-15	23-Dec-15																																																																
SIII10180	Sec III - roadwork & utilities - Road Lighting, TCSS Ducts & Traffic Signs	100	26-Aug-15	23-Dec-15																																																																
Section VI A - Box Culvert La, L1 & FRP-L Construction																																																																				
Sec VI C - Box Culvert La bay 4 (North)																																																																				
CUL11652	Sec VI C - Culvert L - bay 4 (north half) - excavate to formation level	18	25-Jul-15	14-Aug-15																																																																
CUL11655	Sec VI C - Culvert L - bay 4 (north half) - place granular fill and lay geotextile filter	10	15-Aug-15	26-Aug-15																																																																
Box Culvert L1 & FRP-L Construction (Bay 5 - Bay 7)																																																																				
Box Culvert L1 & FRP-L - Bay 5 to 7 Structure																																																																				
Box Culvert L1 & FRP-L - Precast Unit Fabrication (Pile Cap)																																																																				
CUL10866	Sec VI C - Culvert L - bay 5-7 - PC1 to PC6 Construct precast Pile Cap	13	02-Jun-15 A	15-Jul-15																																																																
Box Culvert L1 & FRP-L - Precast Unit Fabrication (Box Structure)																																																																				
CUL10870	Sec VI C - Culvert L - bay 5, 6 & 7 - Construct precast culvert units with Bulkhead	17	18-Apr-15 A	20-Jul-15																																																																
CUL10872	Sec VI C - Culvert L - bay 4b - Construct precast culvert units with Bulkhead	16	16-Jul-15	03-Aug-15																																																																
CUL10873	Sec VI C - Culvert L - bay 4b, 5-7 - dismantle formwork and curing for precast culvert units	8	04-Aug-15	12-Aug-15																																																																
Box Culvert L1 & FRP-L - Precast Unit Installation																																																																				
CUL10864	Sec VI C - Culvert L - bay 5-7 - Demolition of Piling Platform	9	30-May-15 A	10-Jul-15																																																																
CUL10865	Sec VI C - Culvert L - bay 5-7 - Install precast pile caps PC1 to PC6	12	11-Jul-15	24-Jul-15																																																																
CUL10874	Sec VI C - Culvert L - bay 5-7 - Demolition of Temp Platform & Cofferdam ready for towing precast culvert	16	25-Jul-15	12-Aug-15																																																																
CUL10875	Sec VI C - Culvert L - bay 5-7 (& Bay 4b) - install precast culvert units & Touch Up	16	13-Aug-15	31-Aug-15																																																																
Box Culvert L1 & FRP-L - Bay 8																																																																				



Activity ID	Activity Name	Remaining Dur	Early Start	Early Finish	Schedule																																																																				
					June 2015	July 2015	August 2015	September 2015	October 2015	November 2015	December 2015	January 2016	February 2016	March 2016	April 2016	May 2016	June 2016	July 2016	August 2016	September 2016																																																					
					01	08	15	22	29	06	13	20	27	03	10	17	24	31	07	14	21	28	05	12	19	26	02	09	16	23	30	07	14	21	28	04	11	18	25	01	08	15	22	29	07	14	21	28	04	11	18	25	02	09	16	23	30	06	13	20	27	04	11	18	25	01	08	15	22	29	05	12	19
Box Culvert L1 & FRP-L - Bay 8 Temp Work & ELS																																																																									
CUL10200	Culvert L - bay 8 - ELS and bulk excavation & Dwall Break Through ready for Flow Diversion	17	15-Jun-15 A	20-Jul-15																																																																					
Box Culvert L1 & FRP-L - Bay 9 to 11																																																																									
Box Culvert L1 & FRP-L - Bay 9 to 11 General																																																																									
CUL11695	Culvert L - [Summary of Cul L bay 9 to 11] - construct in-situ box culverts	17	08-Jun-15 A	20-Jul-15																																																																					
Box Culvert L1 & FRP-L - Bay 9																																																																									
CUL11740	Culvert L - bay 9 - construct Wall & Roof	14	18-Jun-15 A	16-Jul-15																																																																					
Box Culvert L1 & FRP-L - Bay 10																																																																									
CUL11860	Culvert L - bay 10 - construct Wall & Roof	17	30-Jun-15	20-Jul-15																																																																					
Box Culvert L1 & FRP-L - Bay 11																																																																									
CUL11920	Culvert L - bay 11 - construct top slab	12	22-Jun-15 A	14-Jul-15																																																																					
Box Culvert L1 & FRP-L - Bay 9-11 Others																																																																									
CUL11930	Culvert L - bay 9-11 - Upstand Wall	18	20-Jun-15 A	27-Jul-15																																																																					
CUL11940	Culvert L - bay 9-11 - divert flow to Culvert L permanent structures (bay 9 to bay 11)	0		31-Jul-15																																																																					
CUL12020	Culvert L - bay 9-11 - backfill from top slab to final formation level	60	28-Jul-15	07-Oct-15																																																																					
Box Culvert L1 & FRP-L - Bay 12 to 13																																																																									
Box Culvert L1 & FRP-L - Bay 12 to 13 Piling																																																																									
CUL12354	Culvert L - bay 12 - construct pre-bored H-pile (PC9)	12	27-Jun-15 A	14-Jul-15																																																																					
Box Culvert L1 & FRP-L - Bay 12 to 13 Temp Work & ELS																																																																									
CUL12385	Culvert L - bay 12 - ELS and bulk excavation & Dwall Break Through Ready for Diversion	23	03-Jun-15 A	27-Jul-15																																																																					
CUL12405	Culvert L - bay 12 & 13 - extract sheet piles ready for flow diversion (from Bay 4 to Bay 11)	5	27-Jul-15	31-Jul-15																																																																					
Section VI C - Area 3, 6, 8A & 8C																																																																									
Area 8A & 8C - Seawall Modification																																																																									
Modification of Seawall																																																																									
Modification of Seawall - Zone 1 & 2																																																																									
PRS10043	Sec VIC - Pipe Pile P32 to P62	35	30-May-15 A	10-Aug-15																																																																					
PRS10044	Sec VIC - P33, P33A, P34, P34A, P35, P35A	24	11-Aug-15	07-Sep-15																																																																					
Modification of Seawall - Zone 4																																																																									
PRS10160	Sec VIC - Working Platform (Zone 4)	8	11-Aug-15	19-Aug-15																																																																					
PRS10180	Sec VIC - Pipe Pile P63 to P68 & P64A (Zone 4)	18	20-Aug-15	09-Sep-15																																																																					
Area 6 - Box Culvert bay 5-6																																																																									
SVIC10000	Sec VI C - [Summary] Construct Box Culvert Bay 5-6	53	18-Apr-15 A	31-Aug-15																																																																					
Area 3 - Box Culvert bay 4 and Roadwork																																																																									
SVIC10220	Sec VI C - [Summary] Construct Box Culvert Bay 4 in Area 3	53	01-Jan-15 A	31-Aug-15																																																																					
Section VI D - Area 8B & 10																																																																									
WDII Box 1 Construction																																																																									
WDII Box 1 Submission and Approval / Material Procurement																																																																									
PCU60410	Sec VI D - WD II Box 1 - Prepare Subcontract for Box 1 structure	60	08-Aug-15	06-Oct-15																																																																					
Section VII - Remainder Works																																																																									
Landing Steps Construction																																																																									

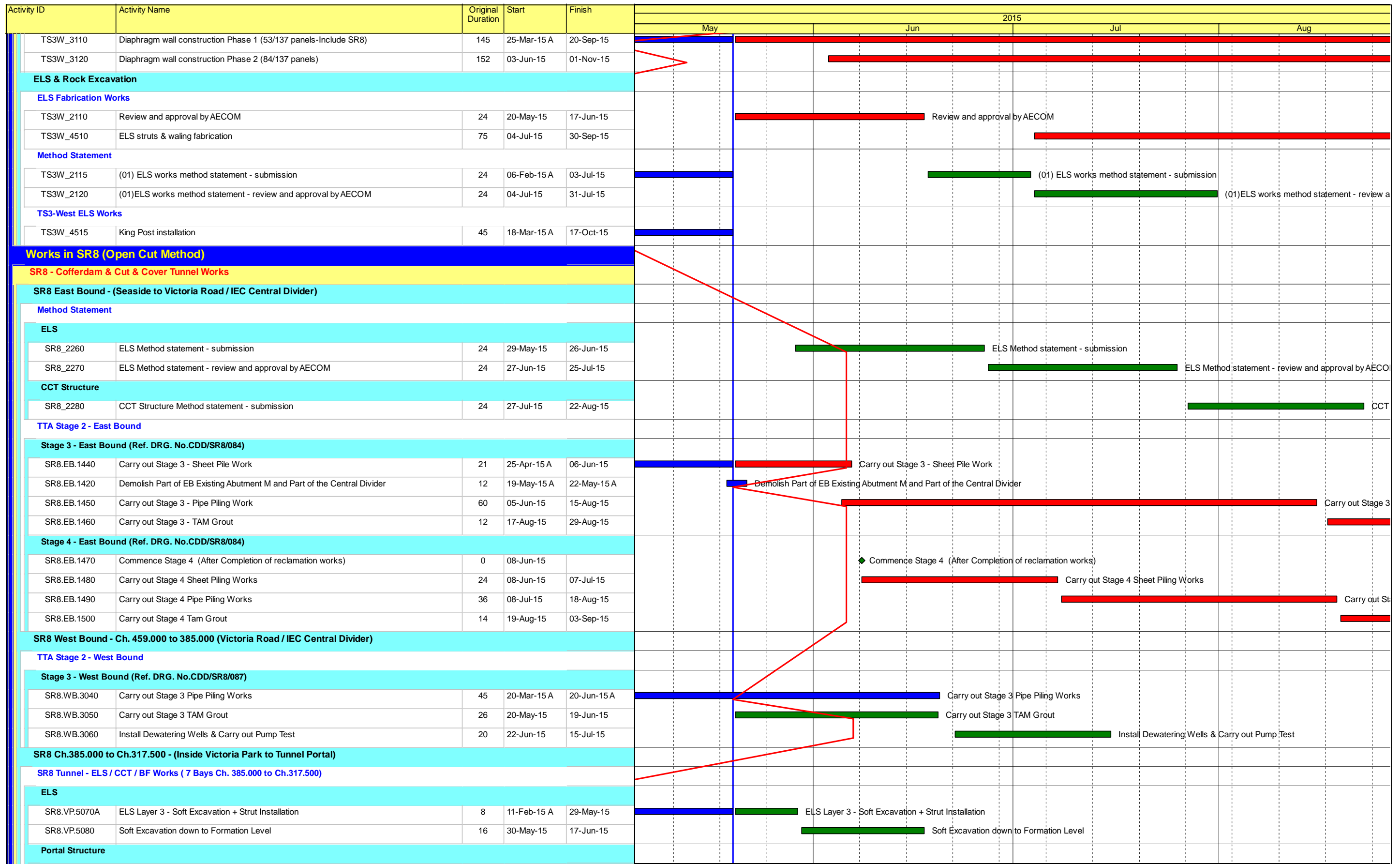


Activity ID	Activity Name	Remaining Dur	Early Start	Early Finish	June 2015		July 2015			August 2015			September 2015			October 2015			November 2015			December 2015			January 2016			February 2016			March 2016			April 2016			May 2016			June 2016			July 2016			August 2016			September 2016																			
					01	08	15	22	29	06	13	20	27	03	10	17	24	31	07	14	21	28	05	12	19	26	02	09	16	23	30	07	14	21	28	04	11	18	25	01	08	15	22	29	07	14	21	28	04	11	18	25	02	09	16	23	30	06	13	20	27	04	11	18	25	01	08	15
SVII11180	Sec VII - Landing Steps - form temporary access from landing steps to Fleet Acade	5	10-Jun-15 A	06-Jul-15	■																																																															
Demolition of Interim Landing Steps and Construct Permanent Seawall at CR111																																																																				
SVII10160	Sec VII - remove interim landing steps - install silt curtain	3	19-Aug-15	21-Aug-15																																																																
SVII10180	Sec VII - remove interim landing steps - break and remove seawall coping	3	22-Aug-15	25-Aug-15																																																																
SVII10200	Sec VII - remove interim landing steps - open cut behind interim landing steps	3	26-Aug-15	28-Aug-15																																																																
SVII10220	Sec VII - remove interim landing steps - protect open cut slope	2	29-Aug-15	31-Aug-15																																																																
Section X - Protection & Preservation of Trees																																																																				
Soft Landscaping Works																																																																				
SX10020	Sec X - Protection & Preservation of Trees	753	31-Jan-13 A	21-Jul-17	■																																																															

Activity ID	Activity Name	Original Duration	Start	Finish	2015											
					May			Jun			Jul			Aug		
DWP-06 (A) - Update Progress As of 20 May 15																
Works in TS3																
Works in TS3-East																
Diaphragm Wall																
TS3-East Post D/wall Works																
TS3E_4100	D/wall Interface coring + grouting	60	20-Feb-15 A	29-May-15	D/wall Interface coring + grouting											
TS3E_4110	D/wall coring + fissure grouting	60	30-Mar-15 A	24-May-15	D/wall coring + fissure grouting											
TS3E_4120	D/wall integrity test	60	30-Mar-15 A	20-May-15 A	D/wall integrity test											
TS3E_4130	Dewatering & observation well installation	36	07-Apr-15 A	20-May-15 A	Dewatering & observation well installation											
TS3E_4140	Pumping test	7	07-May-15 A	20-May-15 A	Pumping test											
ELS																
ELS Fabrication Works																
TS3E_5510	ELS struts & waling fabrication	72	12-Mar-15 A	23-May-15	ELS struts & waling fabrication											
TS3-East ELS Works																
TS3E_5520	ELS Layer 1 - Soft Excav + Strut installation	12	02-May-15 A	29-May-15	ELS Layer 1 - Soft Excav + Strut installation											
TS3E_5540	ELS Layer 2 - Soft Excav + Strut installation	12	30-May-15	10-Jun-15	ELS Layer 2 - Soft Excav + Strut installation											
TS3E_5560	ELS Layer 3 - Soft Excav + Strut installation	12	11-Jun-15	22-Jun-15	ELS Layer 3 - Soft Excav + Strut installation											
TS3E_5580	ELS Layer 4 - Soft Excav + Strut installation	12	23-Jun-15	04-Jul-15	ELS Layer 4 - Soft Excav + Strut installation											
TS3E_5600	ELS Layer 5 - Soft Excav + Strut installation	12	05-Jul-15	16-Jul-15	ELS Layer 5 - Soft Excav + Strut installation											
TS3E_5620	ELS Layer 6 - Soft Excav + Strut installation	12	17-Jul-15	28-Jul-15	ELS Layer 6 - Soft Excav + Strut installation											
TS3E_5660	ELS Layer 7 - Soft Excav + Strut installation	10	29-Jul-15	07-Aug-15	ELS Layer 7 - Soft Excav + Strut installation											
TS3E_5670	Excavation up to Formation Level (No Rock as Rock Head Level is far below F.L.)	6	08-Aug-15	13-Aug-15	Excavation up to Form											
Cut & Cover Tunnel Structure																
Temporary Works Design																
TS3E_2080	(01) RC Temp Work Design - submission	24	20-May-15 A	01-Jun-15	(01) RC Temp Work Design - submission											
TS3E_2085	(01) RC Temp Work Design - review and approval by AECOM	24	02-Jun-15	30-Jun-15	(01) RC Temp Work Design - review and approval by AECOM											
Method Statement																
TS3E_2090	(01)RC works method statement - submission	24	02-Jul-15	29-Jul-15	(01)RC works method statement - submission											
TS3E_2095	(01)RC works method statement - review and approval by AECOM	24	30-Jul-15	26-Aug-15	(01)RC works method statement - review and approval by AECOM											
TS3-East CCT - Ch.4500.000 to Ch.4582.140																
TS3 East CCT - Blinding + Waterproofing																
TS3E_6505	Commence CCT Works	0	14-Aug-15		◆ Commence CCT W											
Removal of Reclamation																
Method Statement																
TS3E_2100	(01) Removal of reclamation method statement - submission	24	14-Aug-15	10-Sep-15												
Works in TS3-West																
Diaphragm Wall																
TS3-West Pre-D/wall Works																
TS3W_2540	Guidewall construction	106	11-Feb-15 A	15-Jun-15	Guidewall construction											
TS3W_2530	Curtain grout/soil pre-treatment/slurry wall	137	12-Feb-15 A	16-Jun-15	Curtain grout/soil pre-treatment/slurry wall											
TS3W_2520A	Pre-drilling / Ground Investigation (SI) - Phase 2	107	09-Apr-15 A	10-Jun-15	Pre-drilling / Ground Investigation (SI) - Phase 2											
TS3-West Diaphragm Construction																

- Actual Work
- Remaining Work
- Critical Remaining Work
- ◆ Milestone

Date	Revision	Checked	Approved
20-May-15	Updated to 20th May 2015	DML/WC	



- Actual Work
- Remaining Work
- Critical Remaining Work
- ◆ Milestone

Date	Revision	Checked	Approved
20-May-15	Updated to 20th May 2015	DML/WC	

Activity ID	Activity Name	Original Duration	Start	Finish	2015				
					May	Jun	Jul	Aug	
Blinding + Waterproofing									
SR8.VP.5030	Blinding for Bay 1 to Bay 7	7	17-Jun-15	26-Jun-15					
SR8.VP.5090	Waterproofing for Bay 1 to Bay 7	7	27-Jun-15	06-Jul-15					
Base Slab + Drainage									
SR8.VP.5100	Base Slab - Bay 1	8	07-Jul-15	15-Jul-15					
SR8.VP.5110	Base Slab - Bay 2	8	16-Jul-15	24-Jul-15					
SR8.VP.5120	Base Slab - Bay 3	8	25-Jul-15	03-Aug-15					
SR8.VP.5130	Base Slab - Bay 4	8	04-Aug-15	12-Aug-15					
SR8.VP.5140	Base Slab - Bay 5	8	13-Aug-15	21-Aug-15					
Pump Sump E									
SR8.VP.5360	Base Slab	8	07-Jul-15	15-Jul-15					
SR8.VP.5370	Wall Up to Portal Base Slab Bottom	10	16-Jul-15	27-Jul-15					
SR8.VP.5380	Fill Up Void Up to Portal Base Slab Bottom	7	28-Jul-15	04-Aug-15					
SR8 Ch 317.500 to Ch 210.000 - U-Structure & Slab (Victoria Park)									
Excavation and Lateral Support									
SR8_2310	ELS - Excavation to Formation Level + Lateral Support for UBA2 to UBA5	21	12-May-15 A	01-Jun-15					
RC CCT & Backfill Ch317.5000 to Ch240.000									
Structure									
Blinding + Waterproofing									
SR8_1830	Blinding & Waterproofing Bay UBA2 to UBA5	4	02-Jun-15	05-Jun-15					
SR8_1840	Remove Bulk Head at CH317.5	7	18-Jun-15	26-Jun-15					
SR8_1860	Blinding & Waterproofing Bay UBA8	4	27-Jun-15	02-Jul-15					
Base Slab									
SR8_1810	SR8 U-structure Base slab (UBA2 - UBA5)	48	06-Jun-15	03-Aug-15					
SR8_1812	SR8 U-structure Base slab (UBA8)	24	03-Jul-15	30-Jul-15					
SR8_1813	Remove SL3 - (UBA8)	14	31-Jul-15	15-Aug-15					
SR8_1811	Remove SL2 - (UBA2 - UBA5)	28	04-Aug-15	04-Sep-15					
Wall									
SR8_1850B	SR8 U-structure Wall (UBA6-UBA7) - Stage 2	14	23-Feb-15 A	23-Jun-15					
SR8_1850A	Remove SL2, 1 (UBA6-UBA7)	14	20-May-15	05-Jun-15					
SR8_2060	SR8 U-structure Wall (UBA8) - Stage 1	7	17-Aug-15	24-Aug-15					
Tsing Fung St - RW & Subway Extension & Toe Wall at Hing Fat St									
Ret. Wall & TF Subway Extension (Portion V)									
Retaining Wall RW8C at Tsing Fung Street (Portion V)									
VP_1770	Install Steel Railing on Top of RW8C	14	20-May-15	05-Jun-15					
VP_1390	Demolish Top Portion of Existing Wall Head and Kerb	18	05-Jun-15	27-Jun-15					
VP_1400	Road Formation - Subbase + Kerb + U-shape Channel	48	27-Jun-15	24-Aug-15					
Retaining Wall + Toe Wall at Hing Fat Street									
Subway Extension at Tsing Fung Street (Portion VIII)									
West Side									
VP_1365	Excavation and Demolition (West Part) of Subway	14	09-Apr-15 A	23-May-15					
VP_1375.10	TFS Subway extension - Blinding and Waterproofing	8	26-May-15	03-Jun-15					
VP_1375.20	TFS Subway extension - Base slab + Drainage	21	04-Jun-15	29-Jun-15					

- █ Actual Work
- █ Remaining Work
- █ Critical Remaining Work
- ◆ Milestone

Date	Revision	Checked	Approved
20-May-15	Updated to 20th May 2015	DML/WC	

Activity ID	Activity Name	Original Duration	Start	Finish	2015				
					May	Jun	Jul	Aug	
VP_1375.30	TFS Subway extension - Walls	18	30-Jun-15	21-Jul-15					TFS Subway extension - Walls
VP_1375.40	TFS Subway extension - Roof Slab	14	22-Jul-15	06-Aug-15					TFS Subway extension - Roof Slab
VP_1375.70	Remove Soffit formwork for Roof Slab	32	07-Aug-15	12-Sep-15					
RC Works - Toe Wall (RW8E)									
VP_6152	Construct and divert Temporary Footpath	36	20-May-15	03-Jul-15					Construct and divert Temporary Footpath
VP_6160	Sheet Piling and Excavation to Formation level	45	04-Jul-15	25-Aug-15					
Protection Works for IEC Abutment M									
TTA (Submissions, Approvals and Implementation)									
ABUTM_0910	Preparation and submission	36	06-Jul-15	15-Aug-15					Preparation and s
ABUTM_0915	TMLG - review and approval	24	17-Aug-15	12-Sep-15					
Design Submissions									
ABUTM_0945	Prepare Shop Drawings for Temporary Works	24	06-Jul-15	01-Aug-15					Prepare Shop Drawings for Temporary Wo
ABUTM_0955	Engineer's Review and Approval - Temp Works	24	03-Aug-15	29-Aug-15					
ABUTM_0965	Prepare Shop Drawings for Permanent Works	24	03-Aug-15	29-Aug-15					
Method Statement									
ABUTM_0900	(01)Protection works method statement - submission	24	03-Aug-15	29-Aug-15					
Works in Victoria Park									
Re-Provisioning Works									
Pavilion									
Materials Submission									
VP_6660	Issue P.O. / Manufacturing / Fabrication	48	29-Apr-15 A	06-Jun-15					Issue P.O. / Manufacturing / Fabrication
Shop Drawings									
VP_0215	Shopdrawing - ER review and approval	24	13-Apr-15 A	23-May-15					Shopdrawing - ER review and approval
Method Statement									
VP_6690	(01)Method statement - review and approval by AECOM	24	20-Apr-15 A	27-May-15					(01)Method statement - review and approval by AECOM
Construction Works - BG Pavillion									
VP_1300	PV - Initial works (Site Clearance, underground utilities etc.)	24	09-Apr-15 A	12-Jun-15					PV - Initial works (Site Clearance, underground utilities etc.)
VP_1340	Demolish existing BGO	24	20-May-15 A	10-Jun-15					Demolish existing BGO
VP_1360	PV - foundation works	21	30-May-15	24-Jun-15					PV - foundation works
VP_1380	PV- structural works, G/F to Roof	24	22-Jun-15	20-Jul-15					PV- structural works, G/F to Roof
VP_1420	PV - ABWF	36	21-Jul-15	31-Aug-15					
VP_1430	PV - E&M Works	36	28-Jul-15	07-Sep-15					
Bowling Green									
Design Submissions for Bowling Green Lighting									
VP_0330	Engineer's Review and Approval	24	23-Sep-14 A	21-May-15					Engineer's Review and Approval
Procurement									
VP_1010.184	Issue PO / Manufacturing	10	22-May-15	03-Jun-15					Issue PO / Manufacturing
VP_1010.194	Delivery	11	04-Jun-15	16-Jun-15					Delivery
VP_6670	Materials Delivery - Green Turf	24	08-Jun-15	07-Jul-15					Materials Delivery - Green Turf
Construction Works									
VP_1170	Demolish existing CP / BGO / Site Clearance	24	09-Apr-15 A	20-May-15					Demolish existing CP / BGO / Site Clearance
VP_1710	BG - Install U/G Sewerage System	24	29-Apr-15 A	02-Jun-15					BG - Install U/G Sewerage System
VP_1720	BG - Install Drainage System	24	20-May-15	17-Jun-15					BG - Install Drainage System

- Actual Work
- Remaining Work
- Critical Remaining Work
- ◆ Milestone

Date	Revision	Checked	Approved
20-May-15	Updated to 20th May 2015	DML/WC	

Activity ID	Activity Name	Original Duration	Start	Finish	2015																		
					May	Jun	Jul	Aug	Sep	Oct	Nov	Dec	Jan	Feb	Mar	Apr							
VP_1730	BG - Install Irrigation System	24	04-Jun-15	03-Jul-15																			
VP_1740	BG - Install Conduit and Lighting System	36	18-Jun-15	31-Jul-15																			
VP_1450	BG - Re-provisioning works - Hardscape & Furnitures (Green Turf/ Granite Tiles)	36	15-Jul-15	25-Aug-15																			
VP_1745	Test & Commission - Lighting System	16	01-Aug-15	19-Aug-15																			
Mooring Components Upkeep (CBTS and ATS)																							
MAR_2000	Mooring Upkeep at Portion XIX(19) & XX(20) - ATS (if instructed by Engineer)	1399	21-Mar-13 A	17-Jan-17																			
MAR_1000	Mooring Upkeep at Portion III (3) - CBTS	574	15-May-14 A	09-Dec-15																			
MAR_3020	Mooring Upkeep at Portion X(10) & XVI(16) - CBTS	979	15-May-14 A	21-Jan-17																			
Works for Public Works Regional Laboratory (North Lantau)																							
Maintenance and Upkeep of New PWRL (Portion XVII)																							
PWRL_1050	Maintenance/ Upkeep of New PWRL	1301	19-Jul-13 A	21-Nov-17																			

- Actual Work
- Remaining Work
- Critical Remaining Work
- Milestone

Date	Revision	Checked	Approved
20-May-15	Updated to 20th May 2015	DML/WC	